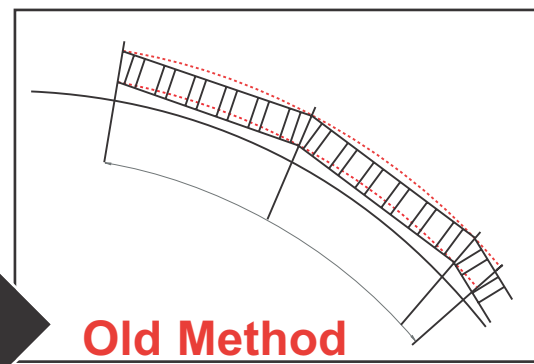
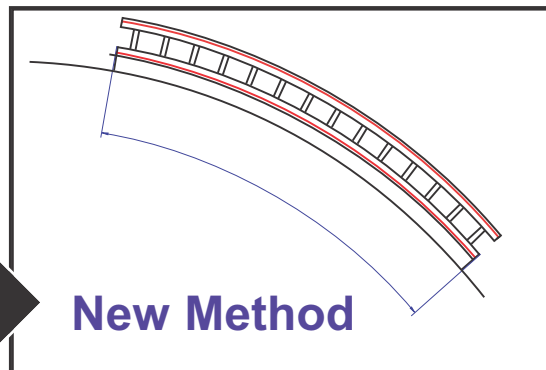


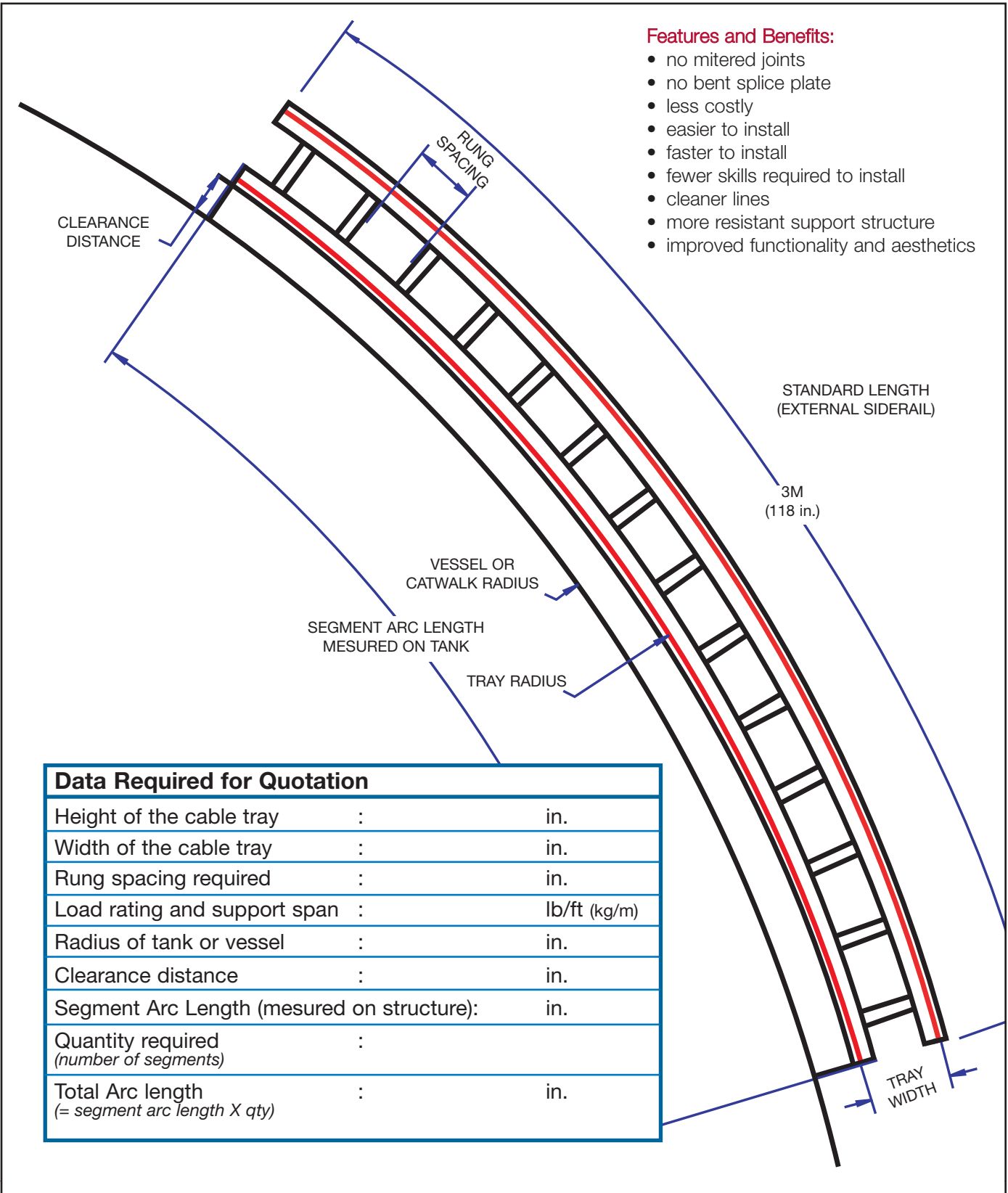
This cable tray design offers a custom-built cable support system for each Petrochemical project tank or tower. This cable tray system is usually installed around the outer perimeter of the catwalks and stairs which are mounted on the tank or vessel.

Thomas & Betts takes pride in manufacturing a complete system to meet your most rigorous requirements. Our cable support systems reduce the costly and labor-intensive modifications required to assemble straight sections, splice plates and accessories to fit your tank or vessel.

Thomas & Betts Large Radius Aluminum cable tray systems mount flawlessly with no extra cutting, set-up or surplus material. With the option of pre-assembly of this cable tray system prior to erection of the tank or vessel, you can drastically reduce installing time.

Technical Specifications





Data Required for Quotation		
Height of the cable tray	:	in.
Width of the cable tray	:	in.
Rung spacing required	:	in.
Load rating and support span	:	lb/ft (kg/m)
Radius of tank or vessel	:	in.
Clearance distance	:	in.
Segment Arc Length (mesured on structure):	:	in.
Quantity required (number of segments)	:	
Total Arc length (= segment arc length X qty)	:	in.

Aluminum Mid-Span Splice Plate

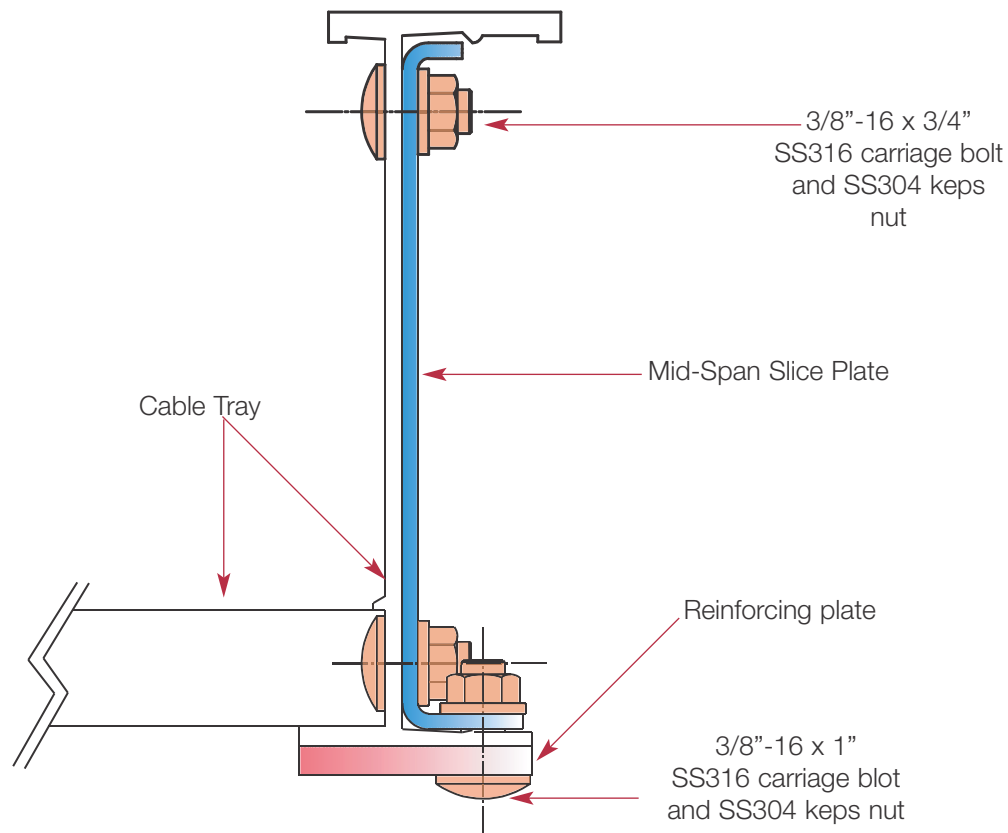


Features:

- Factory pre-drilled side rails for on above series easy installation
- Allows random connexion location
- Tested loading 160 lb/ft, based on a 20ft simple beam test with 1.5 safety factor (tested with AH66 series)
- Supplied with Stainless steel type 316 hardware
- Available on ladder, vented or solid tray style
- Only available in the following series of aluminum tray: AH46, AH56, AH66 and AH76*

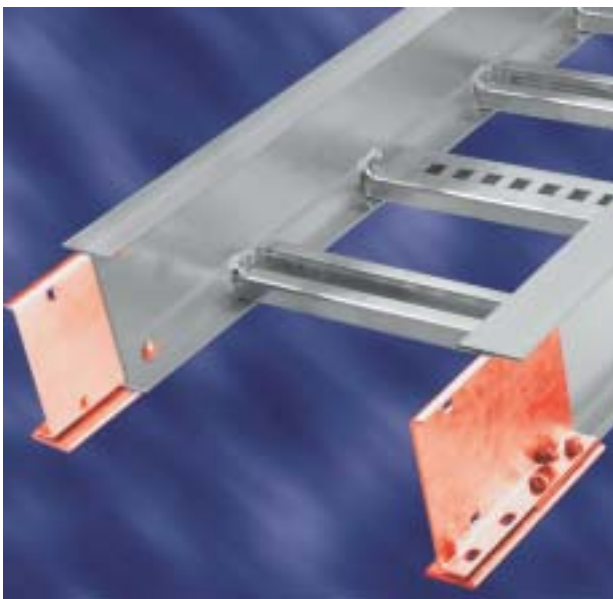
*(20ft Support Span only)

The Splice Plate



Part #: ABW6SSPMS

Typical Installation of Mid-Span Splice Plate



These heavy-duty splice plates are designed to allow random splice location, including the midspan for 20ft support spans. These splices are available for all long-span, ladder, vented or solid tray style.

Note: Also available on fittings to complete the system if required. Please consult the factory for more information.

Ordering Information

Straight Section Number Selection

(AMS4-6)-24-L09-6

Material Style	Series	Siderail Depth	Width	Bottom Type	Length
AMS • Mid-Span Splice	4 • Series 4 5 • Series 5 6 • Series 6 7 • Series 7	6 • (6")	06 • (6") 09 • (9") 12 • (12") 18 • (18") 24 • (24") 30 • (30") 36 • (36")	L06 • 6" rung spacing L09 • 9" rung spacing L12 • 12" rung spacing V • Ventilated S • Solid Trough	6 • (6 meters) 288 • (24ft)

To order straight sections with Mid-Span Splice Plate, replace "AH" in the standard part number with "AMS".

Example: **AH**6624L12-6

AMS6624L12-6

Straight Section Number Selection

(AH 7 - 6) - 24 - L 09 - 36 0

Material Style	Series / Siderail Depth	Width	Bottom Type	Length
H • H-Beam	76 • (6") 47 • (7") 18 • (8")	*06 • (6") 09 • (9") 12 • (12") 18 • (18") 24 • (24") 30 • (30") 36 • (36")	L06 • 6" rung spacing L09 • 9" rung spacing L12 • 12" rung spacing V • Ventilated S • Solid Trough	360 • (30ft)

Note: Only available in these series and sides rail depths.

* 6" wide not available in the AH18 series.

Technical Specifications

All calculations and data are based on 36" wide cable trays with rungs spaced on 12" centers with tray supported as simple spans with deflection measured at the midpoint. Continuous spans may reduce deflection by as much as 50%.

DEFLECTION FACTOR

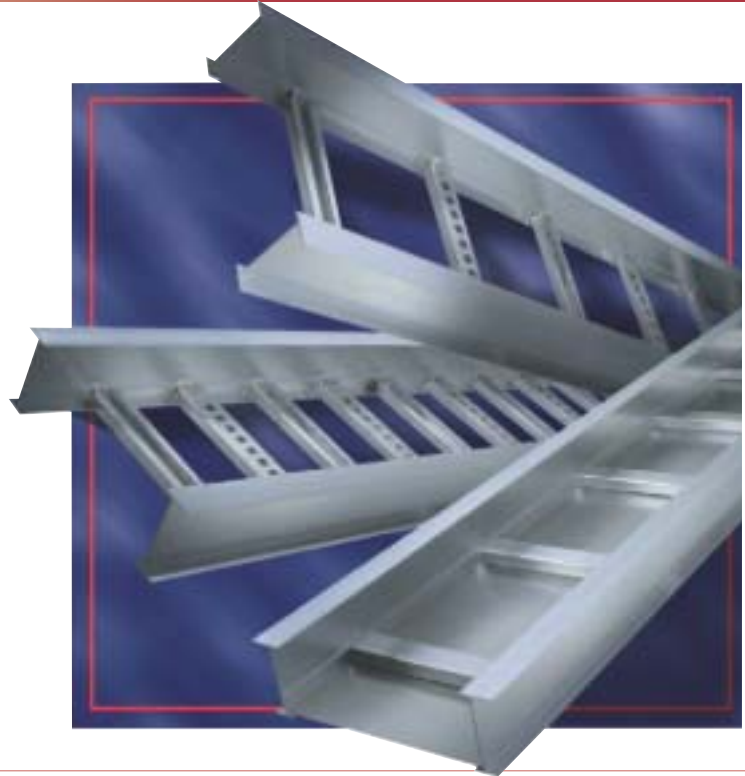
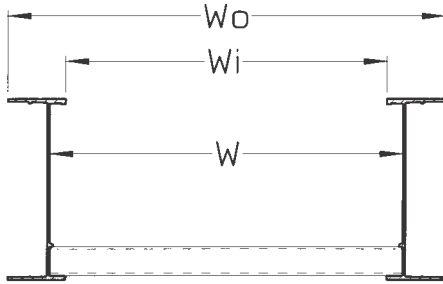
For lighter loads, deflection at any length can be calculated by multiplying the load by the deflection factor.

For FITTINGS consult pages 60 to 99.

SERIES		SUPPORT SPAN (Feet)						
		18	20	22	24	26	28	30
AH7-6	Load (lb/ft)	228	185	153	128	109	94	82
	Deflection (in.)	2.457	3.033	3.670	4.367	5.125	5.944	6.824
	Deflection Factor	0.011	0.016	0.024	0.034	0.047	0.063	0.083
AH4-7	Load (lb/ft)	292	236	195	164	140	121	105
	Deflection (in.)	1.869	2.308	2.793	3.324	3.901	4.524	5.193
	Deflection Factor	0.006	0.010	0.014	0.020	0.028	0.038	0.049
AH1-8	Load (lb/ft)	522	423	350	294	250	216	188
	Deflection (in.)	2.113	2.609	3.157	3.757	4.409	5.114	5.871
	Deflection Factor	0.004	0.006	0.009	0.013	0.018	0.024	0.031

Long Span Systems (30 ft) Straight Section Series 7-6, 4-7, 1-8

APPENDIX



W (in.)	AH7-6		AH4-7		AH1-8	
	Wi (in.)	Wo (in.)	Wi (in.)	Wo (in.)	Wi (in.)	Wo (in.)
6	4.92	8.92	4.62	8.62	4.55	10.55
9	7.92	11.92	7.62	11.62	7.55	13.55
12	10.92	14.92	10.62	14.62	10.55	16.55
18	16.92	20.92	16.62	20.62	16.55	22.55
24	22.92	26.92	22.62	26.62	22.55	28.55
30	28.92	32.92	28.62	32.62	28.55	34.55
36	34.92	38.92	34.62	38.62	34.55	40.55

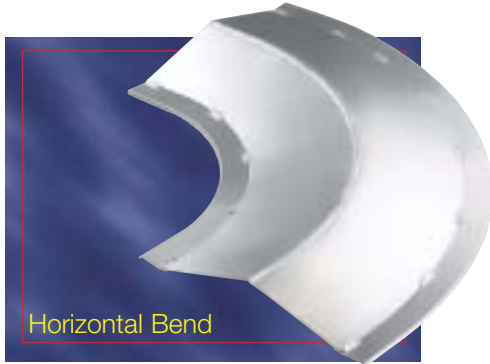
Technical Specifications

LOAD RATINGS

1.5 Safety factor. All tray sections will support an additional 200 lb concentrated load on any portion of tray (siderail, rung, etc.) above and beyond published load class.

SERIES	DIMENSIONS	SIDERAIL DESIGN FACTORS • 1 PAIR	CLASSIFICATIONS		
			NEMA	CSA	UL
AH7-6		$I_x = 21.96 \text{ in}^4$ $S_x = 6.38 \text{ in}^3$ Area = 3.82 in^2	Exceeds 20C	-	UL Cross Sectional Area : 2.00 in^2
AH4-7		$I_x = 36.85 \text{ in}^4$ $S_x = 9.08 \text{ in}^3$ Area = 4.65 in^2	Exceeds 20C	-	UL Cross Sectional Area : 2.00 in^2
AH1-8		$I_x = 58.36 \text{ in}^4$ $S_x = 13.37 \text{ in}^3$ Area = 5.86 in^2	Exceeds 20C	-	UL Cross Sectional Area : 2.00 in^2

Horizontal Bend / Vertical Inside Bend



Aluminum Number Selection

AUW-12-PFC-HB-90-24

Material	Fitting Style	Width	Cover Type	Fitting Type	Degree	Nominal Radius
A • Aluminum	U • U-Beam H • H-Beam	06 • (6") 09 • (9") 12 • (12") 18 • (18") 24 • (24") 30 • (30") 36 • (36")	PFC Peaked flanged cover PVC Peaked vented flanged cover	HB - Horizontal bend VI - Vertical inside Bend	30 45 60 90	12 • (12") 24 • (24") 36 • (36") 48 • (48")

Steel Number Selection

SHW-24-PFC-HB-90-24

Material	Width	Cover Type	Fitting Type	Degree	Nominal Radius
SHW • Hot Dip Galvanized SSW • Stainless Steel 316	06 • (6") 09 • (9") 12 • (12") 18 • (18") 24 • (24") 30 • (30") 36 • (36")	PFC Peaked flanged cover PVC Peaked vented flanged cover	HB - Horizontal bend VI - Vertical inside Bend	30 45 60 90	12 • (12") 24 • (24") 36 • (36") 48 • (48")

Note: Pre-Galvanized not available

Vertical Outside Bend



Aluminum Number Selection

A U W - 4 - 1 2 - P F C - V O - 9 0 - 2 4

Material	Fitting Style	Siderail Height	Width	Cover Type	Fitting Type	Degree	Nominal Radius
A • Aluminum	U • U-Beam H • H-Beam	4 • (4") 5 • (5") 6 • (6") 7 • (7")	06 • (6") 09 • (9") 12 • (12") 18 • (18") 24 • (24") 30 • (30") 36 • (36")	PFC Peaked flanged cover PVC Peaked vented flanged cover	VO- Vertical outside bend	30 45 60 90	12 • (12") 24 • (24") 36 • (36") 48 • (48")

Steel Number Selection

S S W - 6 - 2 4 - P F C - V O - 9 0 - 2 4

Material	Siderail Height	Width	Cover Type	Fitting Type	Degree	Nominal Radius
SHW • Hot Dip Galvanized SSW • Stainless Steel 316	4 • (4") 5 • (5") 6 • (6") 7 • (7")	06 • (6") 09 • (9") 12 • (12") 18 • (18") 24 • (24") 30 • (30") 36 • (36")	PFC Peaked flanged cover PVC Peaked vented flanged cover	VO- Vertical outside bend	30 45 60 90	12 • (12") 24 • (24") 36 • (36") 48 • (48")

Note: Pre-Galvanized not available

Horizontal Tee



Aluminum Number Selection

A U W - 1 2 - P F C - H T - 2 4

Material	Fitting Style	Width	Cover Type	Fitting Type	Nominal Radius
A • Aluminum	U • U-Beam H • H-Beam	06 • (6") 09 • (9") 12 • (12") 18 • (18") 24 • (24") 30 • (30") 36 • (36")	PFC Peaked flanged cover PVC Peaked vented flanged cover	HT - Horizontal tee	12 • (12") 24 • (24") 36 • (36") 48 • (48")

Steel Number Selection

S H W - 2 4 - P F C - H T - 2 4

Material	Width	Cover Type	Fitting Type	Nominal Radius
SHW • Hot Dip Galvanized SSW • Stainless Steel 316	06 • (6") 09 • (9") 12 • (12") 18 • (18") 24 • (24") 30 • (30") 36 • (36")	PFC Peaked flanged cover PVC Peaked vented flanged cover	HT - Horizontal tee	12 • (12") 24 • (24") 36 • (36") 48 • (48")

Note: Pre-Galvanized not available