

### Why should rollers be used?

1. To reduce pulling stress on cables, avoiding undue fatigue or abrasions
2. Minimizes harmful 'shear' load being placed on cable trays
3. To reduce installation time

### Why purchase the T&B Cable Roller System?

- Universal — fits virtually all tray systems
- Mounts from bottom of cable tray, eliminating the need for double handling cables and reducing possibility of cable damage
- Sideways telescopic adjustment allows rollers to accommodate virtually all tray widths
- Nylon bearings require no lubrication
- Independent rollers limit cable abrasion

#### Straight Roller



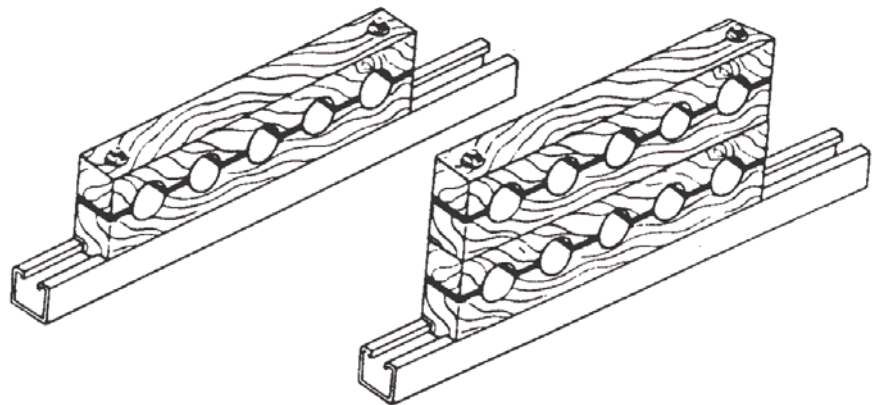
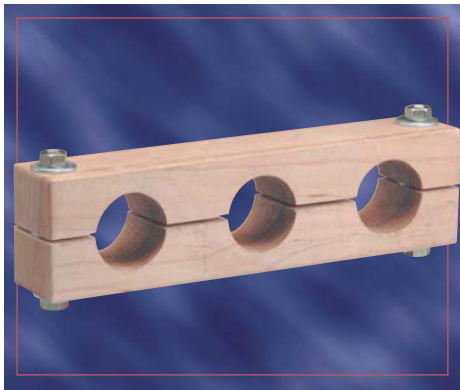
Catalogue Number	Description	Fits
HAR 1224	Straight	all profiles 12" to 24" (30 cm to 60 cm)
HAR 1836	Straight	all profiles 18" to 36" (45 cm to 90 cm)

#### Corner Roller



Catalogue Number	Description	Fits
VHR04	Corner	all profiles

## Custom Maple Hardwood Block



Maple hardwood, paraffin wax impregnated, multiple cable blocks can be made to your specific requirements.

Cable blocks are to insure proper separation of single conductor cables, which prevents any interference due to magnetic fields. The maple hardwood blocks are paraffin wax impregnated to prevent moisture from penetrating and causing rotting and splitting.

Cable blocks are also available in nylon and high density polyethylene.

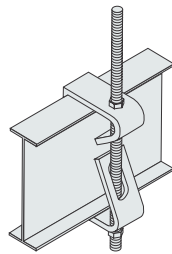
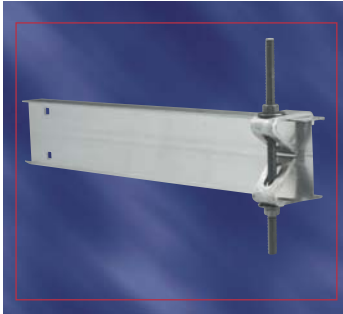
Price and delivery upon request.

Electrogalvanized hardware included, however stainless steel hardware is also available upon request.

# Thomas & Betts Cable Tray

## Cable Tray Support Systems

### Hanger Rod Clamp



These clamps are designed for ladder and ventilated cable tray. They provide a fast and economical solution for a suspended cable tray installation. One kit is needed per each threaded rod location.

Kit consists of: - one bottom clamp  
- one top clamp

Uses 1/2" threaded rod (order separately) / 250 lb capacity per kit.

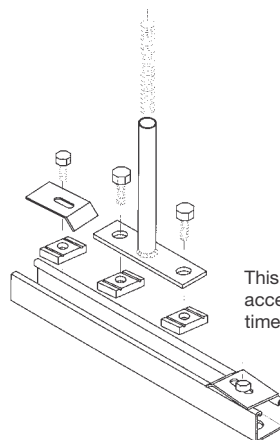
### For Steel Cable Tray

Material Prefix	Height	Catalogue Number
SPW	3"	(Prefix)-3-HRC
SHW	4"	(Prefix)-4-HRC
SSW	5"	(Prefix)-5-HRC
	6"	(Prefix)-6-HRC
	7"	(Prefix)-7-HRC

### For Aluminum Cable Tray

Tray Series	Catalogue no.	Tray Series	Catalogue no.	Tray Series	Catalogue no.
AH04	ABW04HRC	AH25	ABW25HRC	AH46	ABW46HRC
AH14	ABW14HRC	AH35	ABW35HRC	AH56	ABW56HRC
AH24	ABW24HRC	AH45	ABW45HRC	AH66	ABW66HRC
AH34	ABW34HRC	AH16	ABW16HRC	AH27	ABW27HRC
AH44	ABW44HRC	AH26	ABW26HRC	AH37	ABW37HRC
AH54	ABW54HRC	AH36	ABW36HRC		

### Center Support Bracket

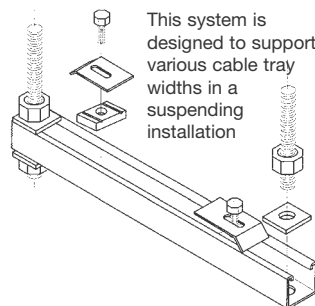


Material	Channel Width	Tray Width	Catalogue Number
SHW	18"	6"	SHW18CSB
		9"	
Hot-Dip Galvanized	30"	12"	SHW30CSB
		18"	
		24"	

This system is designed to reduce cable pulling by allowing access from both sides of cable tray. Installation cost and time are reduced significantly by single point suspension.

- Supplied as a complete kit.
- Uses 1/2" threaded rod (order separately)
- For use with up to 24" wide tray
- Load capacity : 700 lb per kit

### Trapeze Kit



This system is designed to support various cable tray widths in a suspending installation

Tray Width	Channel Width	Catalogue Number
6"	16-7/8"	(*)-06-TPK
9"	18-3/4"	(*)-09-TPK
12"	22-1/2"	(*)-12-TPK
18"	28-1/8"	(*)-18-TPK
24"	35-5/8"	(*)-24-TPK
30"	41-1/4"	(*)-30-TPK
36"	46-7/8"	(*)-36-TPK
42"	52-1/2"	(*)-42-TPK

(\*) Insert : **SHW** for hot dip galvanized  
**SSW** for stainless steel 316  
**SPW** for pre-galvanized

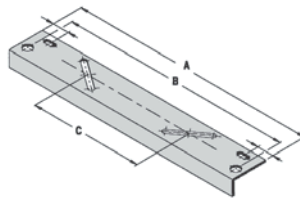
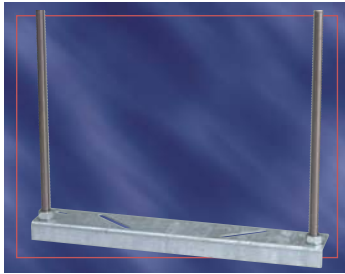
Kit consists of :  
1 pc of strut cut to length  
2 hold down clips  
2 3/8" x 7/8" hex head cap screws  
Uses 1/2" threaded rod (order separately)

4 3/8" strut nuts  
4 1/2" hex nuts  
4 1/2" square washers

# Cable Tray Support Systems

# Thomas & Betts Cable Tray

## Cross Member



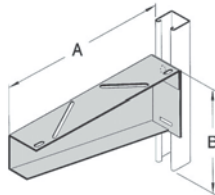
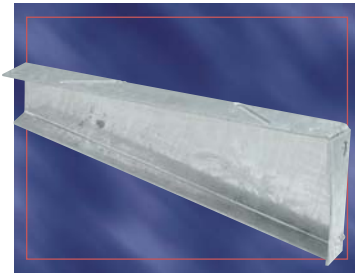
Hanging rods not included.

Standard finish:  
hot dipped galvanized

Catalogue Number	A	B	C
S202-6HDG	6	5	-
S202-9HDG	9	8	2
S202-15HDG	5	14	8
S202-21HDG	21	20	14
S202-27HDG	27	26	20
S202-33HDG	33	32	26

\* Order hold down clips separately. Cat # SSW-SHC

## Cantilever Support



Standard finish:  
hot dipped galvanized

Catalogue Number	A	B	Design Load/lbs
S203-8HDG	8-1/2	4-1/16	1200
S203-14HDG	14-1/2	5-3/8	1200
S203-20HDG	20-1/2	6-11/16	1200
S203-26HDG	26-1/2	8	1200
S203-32HDG	32-1/2	8	1200
S203-38HDG	38-1/2	8	1200

\* Order hold down clips separately. Cat # SSW-SHC

## Conduit to Cable Tray Clamp



Material:  
steel

Standard finish:  
electro-galvanized

Catalogue Number	Conduit Size (inches)
6210	1/2 – 3/4
6212	1 – 1-1/4



Common Accessories

## Conduit to Cable Tray - Swivel Clamp



Material:  
malleable iron hub  
and steel U-bolt

Standard finish:  
zinc plated

Catalogue Number	Conduit Size (inches)
6209	1/2 – 3/4
6211	1 – 1-1/4
6214	1-1/2 – 2
6216	2-1/2 – 3
6218	3-1/2 – 4

Swivel Tray Clamp for aluminum and steel trays with regular or reinforced flanges.



- Serrations and biting teeth on clamping saddle provide a high quality bond between conduit and clamp.
- 1/2 to 4 inch can be clamped to any position in a 90 degree arc.