

Insulation-piercing connectors

Type IPC – Talon insulation piercing connectors



No need to strip conductor insulation or use tape after installation.

- For copper-to-copper, copper-to-aluminum and aluminum-to-aluminum applications (insulated conductor only)
- Performs as splice or tap for non-tension applications up to 600 V, depending on size of connector
- Self insulated for hot line applications
- Six sizes cover range from #10–500 kcmil
- UL® 486B Listed AL9CU (90 °C rated)

Type IPC – Talon insulation piercing connectors



Cat. no.	Al or Cu conductor range AWG/mm ²		No. bolts	Fig.	Dimensions (in.)		
	Main	Tap			W	H	L
IPC1102*	1/0–8	2–8	1	1	2 ⁹ / ₁₆	2	1 ¹⁷ / ₃₂
	50–6	35–6	1	1	2 ⁹ / ₁₆	2	1 ¹⁷ / ₃₂
IPC4111	4/0–1/0	1/0–6	2	2	2 ¹ / ₂	3	1 ¹⁹ / ₃₂
	95–50	50–16	2	2	2 ¹ / ₂	3	1 ²⁹ / ₃₂
IPC4141	4/0–1/0	4/0–1/0	2	2	2 ⁵ / ₈	3 ¹ / ₄	1 ²⁹ / ₃₂
	95–50	95–50	2	2	2 ⁵ / ₈	3 ¹ / ₄	1 ²⁹ / ₃₂
IPC5041*	500–350	4/0–4	1	1	2	2 ¹ / ₂	2 ¹ / ₈
	240–185	90–25	1	1	2	2 ¹ / ₂	2 ¹ / ₈
IPC3535	350–4/0	350–4/0	2	2	2 ¹ / ₁₆	2 ¹ / ₂	2 ¹ / ₈
	185–95	185–95	2	2	2 ¹ / ₁₆	2 ¹ / ₂	2 ¹ / ₈
IPC3541	350–4/0	4/0–10	1	1	2 ³ / ₄	3	2 ⁵ / ₈
	185–95	95–6	1	1	2 ³ / ₄	3	2 ⁵ / ₈

Diagrams

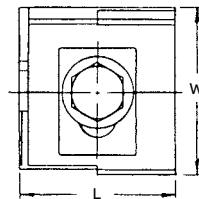


Fig. 1

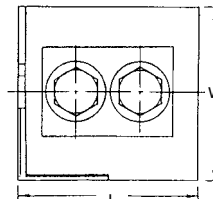
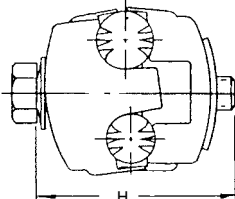
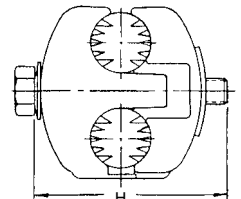


Fig. 2



* 600V Rating (all others 300V).