

Automatic splices and deadends

ATS Autoset® automatic splices



Make quick, dependable overhead tension splices and speed up installation time.

Blackburn® automatic connectors make fast and dependable overhead tension splices that take a bite out of installation time. The conductor simply slips into the color-coded, funnel-shaped end piece and automatically enters the pilot cup with a gentle push. The pilot cup guides the conductor past the unique serrated jaws and into the center of the connector. When the conductor meets the center stop, the pull-back locks it into position as the jaws firmly clamp down. The more pull, the more bite, which provides an instant, positive and automatic connection.

- Color-coded, funnel-shaped end pieces provide instant visual identification of maximum conductor size and swiftly guide conductor into position for insertion

- Pilot caps envelop cable strands and guide the conductors into the center of the splice
- Die-cast precision-made jaws provide optimum contact area for a greater range of conductor sizes
- Compression spring positions the jaw for positive conductor acceptance
- Tubular center stop automatically determines proper insertion length of both conductors
- High-strength aluminum-alloy tubing covers the connection for superior corrosion protection and long-lasting durability
- Color-coded tape enables identification of the minimum conductor size of wide-range connectors – it further eliminates errors and speeds up installations!

ATS Autoset automatic splices

Cat. no.	Conductor range (AWG or kcmil)			Decimal range	Color code	Overall length (in.)
	ACSR	AAAC	AAC			
ATS4-S	#4 ⁵ / ₁₆ , 7 ¹ / ₁₆	#4	#4	0.232–0.260	4 – Orange	11.50
ATS4	#4 ⁵ / ₁₆ , 7 ¹ / ₁₆	#4	#4	0.232–0.260	4 – Orange	13.75
ATS42	#4 ⁵ / ₁₆ , 7 ¹ / ₁₆	#4–#2	#4–#2	0.232–0.332	4 – Orange, 2 – Red	13.75
ATS2	#2 ⁵ / ₁₆ , 7 ¹ / ₁₆	#2	#2	0.292–0.332	2 – Red	13.75
ATS10	1/0 ⁵ / ₁₆	1/0	1/0	0.368–0.410	1/0 – Yellow	16.25
ATS1020	1/0 ⁵ / ₁₆	1/0–2/0	1/0–2/0	0.368–0.461	1/0 – Yellow, 2/0 – Gray	16.25
ATS20	2/0 ⁷ / ₁₆	2/0	2/0	0.414–0.461	2/0 – Gray	16.25
ATS30	3/0 ⁵ / ₁₆	3/0	3/0	0.461–0.522	3/0 – Black	16.25
ATS3040	3/0 ⁵ / ₁₆	3/0–4/0	3/0–4/0	0.461–0.575	3/0 – Black, 4/0 – Pink	23.50
ATS40	4/0 ⁵ / ₁₆	4/0	4/0	0.475–0.575	4/0 – Pink	23.50
ATS266336	266 ¹⁸ / ₁₆ , 266 ²⁶ / ₁₆ *, 336 ¹⁸ / ₁₆	312.8*	266–336	0.586–0.684	Green	23.50
ATS397477	336 ²⁶ / ₁₆ *, 397 ¹⁸ / ₁₆ , 397 ²⁶ / ₁₆ *, 477 ¹⁸ / ₁₆ *	394.5*	397–477	0.720–0.858	Blue	23.50

* Application limited to maximum 10,000 lb tensile.

Automatic splices and deadends

ATD-ZB stainless steel bail



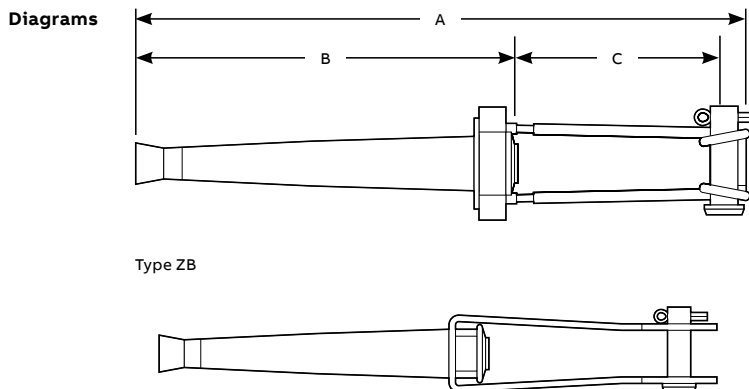
This dead-end installs quickly and easily, reducing maintenance costs and inventory.

- Color-coded, funnel-shaped end piece provides instant visual identification of maximum conductor size and swiftly guides conductor into position for insertion
- Pilot cap envelops cable strand and guides the conductor into the center of the splice
- Die-cast precision-made jaws provide optimum contact area for a greater range of conductor sizes
- Compression spring positions the jaw for positive conductor acceptance
- Special microcrystalline-based inhibitor coats the jaws and tube's inner diameter, seals the connection and provides a high-pressure lubricant for long-term, continuous performance

- Factory-installed dust covers repel dirt and debris
- Versatile for deadending ACSR, AAC and AAAC conductors
- Breaking strength exceeds 95% of conductor's rated strength, up to a maximum of 10,000 lbs
- Galvanized steel clevis pin and stainless steel cotter pin (included) enable the bail to be used with standard deadend suspension insulators
- Color-coded tape enables identification of the minimum conductor size of wide-range connectors – it further eliminates errors and speeds up installations

ATD-ZB stainless steel bail

Cat. no.	Conductor range (AWG or kcmil)			Decimal range	Color code	Approximate dimensions (in.)		
	ACSR	AAAC	AAC			A	B	C
ATD42ZB	#4 ⁶ / ₁ , ⁷ / ₁ ; #2 ⁵ / ₁ , ⁷ / ₁	#4, #2	#4, #2	0.232–0.332	4 – Orange, 2 – Red	12 ¹³ / ₁₆	7 ¹³ / ₁₆	5 ¹ / ₁₆
ATD1020ZB	1/0 ⁶ / ₁ , 2/0 ⁶ / ₁	1/0, 2/0	1/0, 2/0	0.368–0.461	1/0 – Yellow, 2/0 – Gray	14 ¹ / ₂	9	4 ¹⁵ / ₁₆
ATD3040ZB	3/0 ⁶ / ₁ , 4/0 ⁶ / ₁	3/0, 4/0	3/0, 4/0	0.461–0.575	3/0 – Black, 4/0 – Pink	20 ³ / ₄	11 ³ / ₄	8 ¹ / ₂
ATD266336ZB	266 ¹⁸ / ₁ , 336 ¹⁸ / ₁	266, 336	266, 336	0.586–0.684	Green	20 ³ / ₄	11 ³ / ₄	8 ¹ / ₂
ATD397477ZB	397 ¹⁸ / ₁ , 477 ¹⁸ / ₁	397, 477	397, 477	0.720–0.858	Blue	20 ³ / ₄	11 ³ / ₄	8 ¹ / ₂



Automatic splices and deadends

ATD-CB clevis bracket & ATD-FB flexible bail



ATD42CB

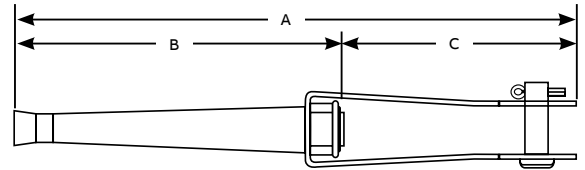
Grab and go – slots are provided for use with standard pulling hooks.

- Versatile for dead-ending ACSR, AAC and AAAC conductors
- Breaking strength exceeds 95% of conductor's rated strength, up to a maximum of 10,000 lbs
- Galvanized steel clevis pin and stainless steel cotter pin (included) enable the bail to be used with standard deadend suspension insulators

ATD-CB clevis bracket

Cat. no.	Conductor range (AWG or kcmil)				Approximate dimensions (in.)			
	ACSR	AAAC	AAC	Decimal range	Color code	A	B	C
ATD42CB	#4 ⁶ / ₄ , 7 ¹ / ₄ ; #2 ⁶ / ₄ , 7 ¹ / ₄	#4, #2	#4, #2	0.232–0.332	4 – Orange, 2 – Red	12 ³ / ₁₆	7 ³ / ₁₆	5 ¹ / ₁₆
ATD1020CB	1/0 ⁶ / ₄ , 2/0 ⁶ / ₄	1/0, 2/0	1/0, 2/0	0.368–0.461	1/0 – Yellow, 2/0 – Gray	15 ¹ / ₄	9	5 ³ / ₈
ATD3040CB	3/0 ⁶ / ₄ , 4/0 ⁶ / ₄	3/0, 4/0	3/0, 4/0	0.461–0.575	3/0 – Black, 4/0 – Pink	20 ³ / ₄	11 ³ / ₄	6 ¹ / ₂
ATD266336CB	266 ¹⁸ / ₄ , 336 ¹⁸ / ₄	266, 336	266, 336	0.586–0.684	Green	19 ³ / ₁₆	11 ³ / ₄	6 ¹ / ₂
ATD397477CB	397 ¹⁸ / ₄ , 477 ¹⁸ / ₄	397, 477	397, 477	0.720–0.858	Blue	19 ³ / ₁₆	11 ³ / ₄	6 ¹ / ₂

Diagram



ATD42FB

Use with spool-type and other insulators when flexibility is a must.

- Versatile for dead-ending ACSR, AAC and AAAC conductors
- Breaking strength exceeds 95% of conductor's rated strength

ATD-FB flexible bail

Cat. no.	Conductor range (AWG or kcmil)				Approximate dimensions (in.)		
	ACSR	AAAC	AAC	Decimal range	Color code	A	B
ATD42FB	#4 ⁶ / ₄ , 7 ¹ / ₄ ; #2 ⁶ / ₄ , 7 ¹ / ₄	#4, #2	#4, #2	0.232–0.332	4 – Orange, 2 – Red	14 ³ / ₁₆	7 ³ / ₁₆
ATD1020FB	1/0 ⁶ / ₄ , 2/0 ⁶ / ₄	1/0, 2/0	1/0, 2/0	0.368–0.461	1/0 – Yellow, 2/0 – Gray	18 ⁷ / ₈	9

Diagram

