

MTX-MK9-USB

Product and ordering information

Cat. no.	Description	Pack unit (MOQ)
Printer and accessories		
MTX-MK9-CU-YW	Cutting unit (yellow) for MK9-USB	2 pcs
MTX-MK9-RB	Black ribbon 50 m	5 pcs (250 m)
MTX-MK9-RC	Ribbon cassette holder	1 pce
MTX-MK9-CAS46	Profile guide cassette for PP-046	1 pce
MTX-MK9-CAS63	Profile guide cassette for PP-063	1 pce
MTX-MK9-CAS90	Profile guide cassette for PP-090 and PPA-090	1 pce
MTX-MK9-RS	Reel stand	1 pce
Tape cassettes		
MK9-PL050CN4	Tape cassette 5 mm x 8 m, yellow	1 pce
MK9-PL050CN9	Tape cassette 5 mm x 8 m, white	1 pce
MK9-PL050CNT	Tape cassette 5 mm x 8 m, transparent	1 pce
MK9-PL090CN4	Tape cassette 9 mm x 8 m, yellow	1 pce
MK9-PL090CN9	Tape cassette 9 mm x 8 m, white	1 pce
MK9-PL090CNT	Tape cassette 9 mm x 8 m, transparent	1 pce
MK9-PL120CN4	Tape cassette 12 mm x 8 m, yellow	1 pce
MK9-PL120CN9	Tape cassette 12 mm x 8 m, white	1 pce
PO profile		
PO-02000SNØ	PO-profile 0.5 mm ² . Dia. 1.7-2.2 mm	5.0 m/compact disc
PO-02000DNØ	PO-profile 0.5 mm ² . Dia. 1.7-2.2 mm	60,0 m/DN-reel
PO-03000SNØ	PO-profile 0.75 mm ² . Dia. 2.0-2.5 mm	4.5 m/compact disc
PO-03000DNØ	PO-profile 0.75 mm ² . Dia. 2.0-2.5 mm	50,0 m/DN-reel
PO-04000SNØ	PO-profile 1.0 mm ² . Dia. 2.2-2.8 mm	4.5 m/compact disc
PO-04000DNØ	PO-profile 1.0 mm ² . Dia. 2.2-2.8 mm	50,0 m/DN-reel
PO-05000SNØ	PO-profile 1.5 mm ² . Dia. 2.7-3.5 mm	4.0 m/compact disc
PO-05000DNØ	PO-profile 1.5 mm ² . Dia. 2.7-3.5 mm	40,0 m/DN-reel
PO-06000SNØ	PO-profile 2.5 mm ² . Dia. 3.2-4.0 mm	3.5 m/compact disc
PO-06000DNØ	PO-profile 2.5 mm ² . Dia. 3.2-4.0 mm	40,0 m/DN-reel
PO-068TWBNØ-100	PO-068TW profile with thin wall Dia. 6.8-7.0 mm	100,0 m/big reel
PO-068TWSNØ	PO-068TW profile with thin wall Dia. 6.8-7.0 mm	4.5 m/compact disc
PO-068Q10BNØ	PO-068Q profile punched, 10 mm between the punched holes	50,0 m/big reel
PO-06Q10SNØ	PO-profile punched, 10 mm between the punched holes	3.5 m/compact disc
PO-07000SNØ	PO-profile 4.0 mm ² . Dia. 3.8-4.7 mm	3.5 m/compact disc
PO-07000DNØ	PO-profile 4.0 mm ² . Dia. 3.8-4.7 mm	30.0 m/DN-reel

Standard USB cables available at most electronic retail stores.

Notes:

Following Partex products can be combined with ProMark consumables:

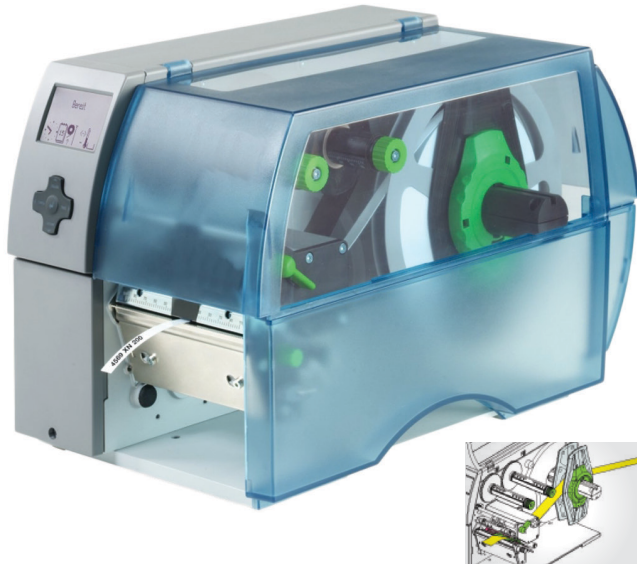
1. PM-10/20/24 transparent sleeves with ProMark PP-046/090 insert tags and MK9-PL090/120 self-adhesive labels.
2. PT+02/10/20/30 transparent sleeves are combined with PP-046 insert tag profile.
3. PTC10/20/30/50 transparent sleeves are combined with PP-046 insert tag profile.
4. PKH and SMOH carrier strips are combined with PO-068TW/PRZ071 cable marking profiles.

For detailed information, please contact your regional sales office.

Ø = 4 yellow profile, 9 white profile, other colours on request
Zerex sleeves and carrier strips are halogen-free

MTX-MK10-KIT1

Thermal transfer printer



Specifications – Printer data

MTX-MK10-KIT1 is a modern thermal transfer printer for Partex PO profiles for all needs of wire and cable marking with high production speed (up to 125 mm/sec).

MTX-MK10-KIT1 has a direct connection to any computer by means of a USB cable and is controlled by Partex WinSign software.

It prints on profiles directly from a reel and semi-detaches the marker at desired lengths with the built-in cutting unit.

In addition to PO profile, the MTX-KM10-KIT1 prints on heat-shrink tubing and PARTEX component marker PPA profile.

Production on site

- Compact heavy-duty printer for high-demand production for wire, cable and component marking
- Feeds, prints and cuts bulk cable markers (PO), heat-shrink (PHZ) profiles and self-adhesive profiles
- MTX-MK10-KIT1 is a very cost-effective identification system for use in panel building and electrical installations
- USB connection, controlled by Partex software WinSign

Specifications – General

- Thermal transfer printing
 - 300 dpi print resolution
- Printing speed
 - 125 mm/sec.
- Printer head width
 - 105 mm
- PC connection
 - USB 2.0 connection and Partex WinSign software
- Power supply
 - 100–240 V (50–60 Hz)
 - Power consumption: max. 300 W
 - CE certified
- Measurements
 - (L x W x H): 446 x 242 x 275 mm
- Weight
 - 9 kg
- Cutter
 - Perforation cutter
- Operation data
 - Operating temperature: 10 °C to 35 °C
 - Humidity: 30–85% non-condensing
 - To obtain the best printing result, the temperature of the profile should not be lower than 25 °C

MTX-MK10-KIT1

Product and ordering information

—
01 PP/PPA
Inlay tags/
component markers
—
02 PO/POZ
Wire/cable markers
—
03 SMOZ
Cable markers

- Includes a complete system with a wide range of products and is user-friendly
- Features a printer with high-production speed, a perforation cutter and solid construction

- Uses software that allows the printer to be directly connected to a PC via USB and is controlled by the Partex WinSign software, which supports different font sizes



01



02



03

Cat. no.	Description	Pack unit (MOQ)
Printer and accessories		
MTX-MK10-KIT1	Printer MK10, cutting unit, software WinSign, ribbon (MK10-RBR7125) and USB cable	1 pce
MTX-MK10-RBBK2020-40	MK10, ink ribbon, 40 mm for: POZ, PP+, PKZ, and PHZ (F), 300 m	1 pce
MTX-MK10-RBBK2020-80	MK10, ink ribbon, 80 mm for: POZ, PP+, PKZ, and PHZ (F), 300 m	1 pce
MTX-MK10-RB-BK510-40	Black ink ribbon, Type 510 (for PO) 40 mm wide, 300 m	1 pce
MTX-MK10-RB-BK510-55	Black ink ribbon, Type 510 (for PO) 55 mm wide, 300 m	1 pce
MTX-MK10-RB-BK510-83	Black ink ribbon, Type 510 (for PO) 83 mm wide, 300 m	1 pce
MTX-MK10-CU	Cutting unit (Included in MK10-KIT1)	1 pce
MTX-MK-RS	Reel stand	1 pce
PLA77020WSNT	Software: LabelSoft (English)	1 pce
Cabinet and component markers		
PP-06300SN9	PP-profile H = 6.3 mm, for Phoenix terminal blocks (UT2.5, UTTB2.5, ST4, DT2.5, QTC, DT12.5)	15.0 m/ compact disc

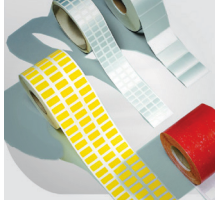
MTX-MK10-KIT1

Product and ordering information

Cat. no.	Description	Pack unit (MOQ)
Heat-shrink tubing		
PHZ20032BN*	Heat shrink, dia. 3.2 mm, shrink ratio 2:1, Zerex	150 m/reel
PHZ20048BN*	Heat shrink, dia. 4.8 mm, shrink ratio 2:1, Zerex	150 m/reel
PO-profile		
PO-01000BN*	PO-profile 0.25 mm ² dia. 1.3-1.8 mm	250 m/reel
PO-02000BN*	PO-profile 0.5 mm ² dia. 1.7-2.2 mm	250 m/reel
PO-03000BN*	PO-profile 0.75 mm ² dia. 2.0-2.5 mm	250 m/reel
PO-04000BN*	PO-profile 1.0 mm ² dia. 2.2-2.8 mm	200 m/reel
PO-05000BN*	PO-profile 1.5 mm ² dia. 2.7-3.5 mm	200 m/reel
PO-06000BN*	PO-profile 2.5 mm ² dia. 3.2-4.0 mm	200 m/reel
PO-068TWBN*	PO-068TW profile with thin wall dia. 6.8-7.0 mm	50 m/reel
PO-07000BN*	PO-profile 4.0 mm ² dia. 3.8-4.7 mm	100 m/reel
PO-08000BN*	PO-profile 6.0 mm ² dia. 4.6-5.5 mm	100 m/reel
PO-09000BN*	PO-profile 10.0 mm ² dia. 5.6-7.0 mm	50 m/reel

MTX-MK10-KIT1

Product and ordering information



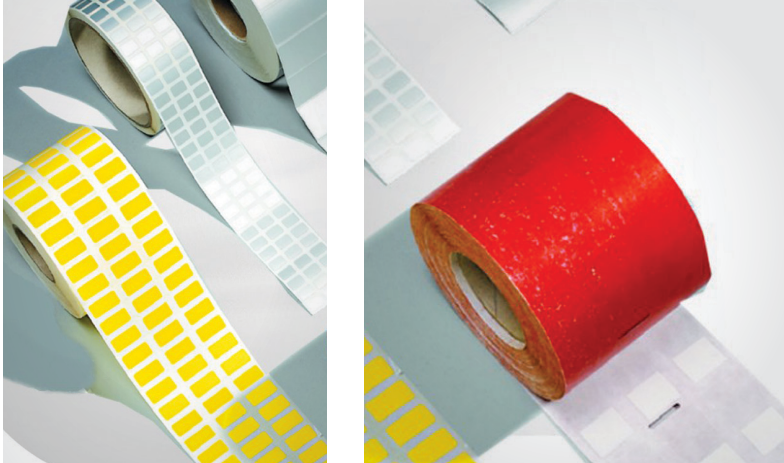
Thermal transfer labels, polyester

- Printing with thermal transfer printer, waste removed, rounded corners
- Material: SO-5 and S7 series polyester, matte yellow SO, white S3, silver S1 and security film S5, S2 polyester silver gloss, S4 white gloss
- Package: 1 roll. Core 38 or 76 mm (1.496 or 2.992 in.)
- Polyester labels, 1-track or 3-track, core diameter 38 mm (1.496 in.), perforated, 5 rolls/box

Cat. no. S2 silver glossy	Cat. no. S4 white glossy	Cat. no. S5 security	Size		Track row of labels	Quantity/roll
			mm	in.		
PLT8K101S28-4/3	PLT8K101S49-5/3	PLT8K101S58-6/3	15 x 6	0.591 x 0.236	3	10,000
PLT8K102S28-4/3	PLT8K102S49-5/3	PLT8K102S58-6/3	18 x 6.5	0.709 x 0.256	3	10,000
PLT8K103S28-4/3	PLT8K103S49-5/3	PLT8K103S58-6/3	18 x 9	0.709 x 0.354	3	10,000
PLT8K106S28-4/3	PLT8K106S49-5/3	PLT8K106S58-6/3	20 x 8	0.787 x 0.315	3	10,000
PLT8K105S28-4	PLT8K105S49-5	PLT8K105S58-6	25.4 x 12.7	1 x 0.5	1	2,000
PLT8K105S28-4/3	PLT8K105S49-5/3	PLT8K105S58-6/3	25.4 x 12.7	1 x 0.5	3	10,000
PLT8K108S28-4	PLT8K108S49-5	PLT8K108S58-6	26 x 10	1.024 x 0.394	1	2,000
PLT8K108S28-4/3	PLT8K108S49-5/3	PLT8K108S58-6/3	26 x 10	1.024 x 0.394	3	10,000
PLT8K109S28-4/3	PLT8K109S49-5/3	PLT8K109S58-6/3	26.5 x 17.5	1.043 x 0.689	1	5,000
PLT8K104S28-4	PLT8K104S49-5	PLT8K104S58-6	30 x 20	1.181 x 0.787	3	2,000
PLT8K104S28-4/3	PLT8K104S49-5/3	PLT8K104S58-6/3	30 x 20	1.181 x 0.787	1	6,000
PLT8K111S28-4	PLT8K111S49-5	PLT8K111S58-6	32 x 9.5	1.260 x 0.374	3	2,000
PLT8K111S28-4/3	PLT8K111S49-5/3	PLT8K111S58-6/3	32 x 9.5	1.260 x 0.374	1	10,000
PLT8K115S028-4	PLT8K115S49-5	PLT8K115S58-6	38 x 19	1.496 x 0.748	1	2,000
PLT8K121S28-4	PLT8K121S49-5	PLT8K121S58-6	45 x 23	1.772 x 0.906	1	2,000
PLT8K130S28-4	PLT8K130S49-5	PLT8K130S58-6	50 x 23	1.969 x 0.906	1	2,000
PLT8K134S28-4	PLT8K134S49-5	PLT8K134S58-6	60 x 36	2.362 x 1.417	1	1,000
PLT8K135S28-4	PLT8K135S49-5	PLT8K135S58-6	65 x 35	2.559 x 1.378	1	1,000
PLT8K133S28-4	PLT8K133S49-5	PLT8K133S58-6	65 x 53	2.559 x 2.087	1	750
PLT8K136S28-4	PLT8K136S49-5	PLT8K136S58-6	70 x 48	2.756 x 1.890	1	1,000
PLT8K139S28-4	PLT8K139S49-5	PLT8K139S58-6	89 x 82	3.504 x 3.228	1	500
PLT8K140S28-4	PLT8K140S49-5	PLT8K140S58-6	101.6 x 23	4 x 0.906	1	2,000
PLT8K137S28-4	PLT8K137S49-5	PLT8K137S58-6	101.6 x 48	4 x 1.890	1	1,000
PLT8K138S28-4	PLT8K138S49-5	PLT8K138S58-6	101.6 x 74	4 x 2.913	1	500
PLT8K141S28-4	PLT8K141S49-5	PLT8K141S58-6	101.6 x 150	4 x 5.906	1	300

MTX-MK10-KIT1

Product and ordering information



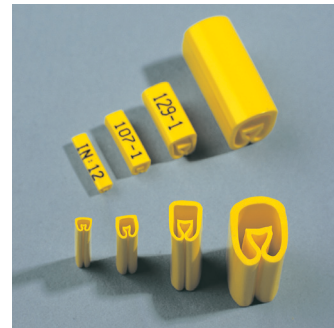
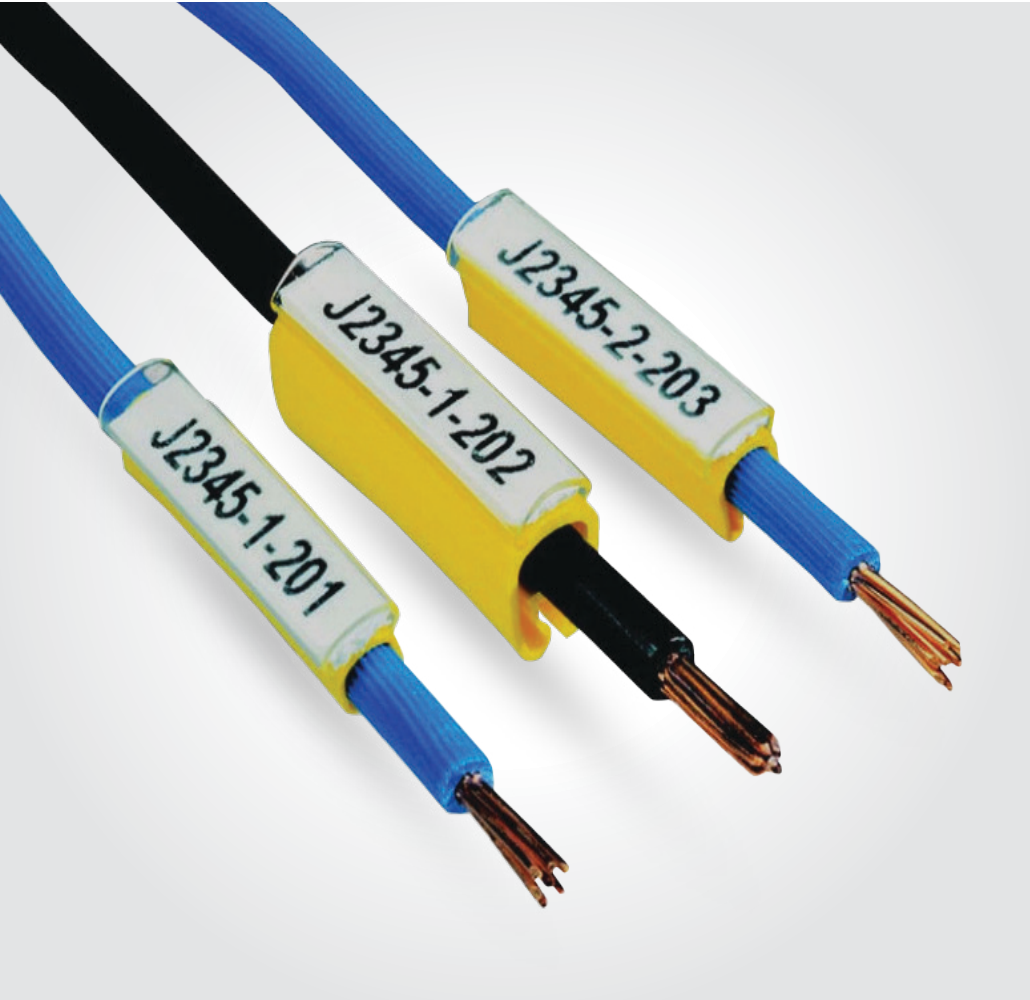
Thermal transfer labels, polyester (cont'd)

- Printing with thermal transfer printer, waste removed, rounded corners
- Material: SO-5 and S7 Series polyester, matte yellow SO, white S3, silver S1 and security film S5, S2 polyester silver gloss, S4 white gloss
- Package: 1 roll. Core 38 or 76 mm (1.496 or 2.992 in.)
- Polyester labels, 1-track or 3-track, core diameter 38 mm (1.496 in.), perforated, 5 rolls/box

Cat. no. SO yellow matte	Cat. no. S1 silver matte	Cat. no. S3 white matte	mm	Size in.	Track tow of labels	Quantity/roll
PLT8K101S04-1/3	PLT8K101S18-3/3	PLT8K101S39-2/3	15 x 6	0.591 x 0.236	3	10,000
PLT8K102S04-1/3	PLT8K102S18-3/3	PLT8K102S39-2/3	18 x 6.5	0.709 x 0.256	3	10,000
PLT8K103S04-1/3	PLT8K103S18-3/3	PLT8K103S39-2/3	18 x 9	0.709 x 0.354	3	10,000
PLT8K106S04-1/3	PLT8K106S18-3/3	PLT8K106S39-2/3	20 x 8	0.787 x 0.315	3	10,000
PLT8K105S04-1	PLT8K105S18-3	PLT8K105S39-2	25.4 x 12.7	1 x 0.5	1	2,000
PLT8K105S04-1/3	PLT8K105S18-3/3	PLT8K105S39-2/3	25.4 x 12.7	1 x 0.5	3	10,000
PLT8K108S04-1	PLT8K108S18-3	PLT8K108S39-2	26 x 10	1.024 x 0.394	1	2,000
PLT8K108S04-1/3	PLT8K108S18-3/3	PLT8K108S39-2/3	26 x 10	1.024 x 0.394	3	10,000
PLT8K109S04-1/3	PLT8K109S18-3/3	PLT8K109S39-2/3	26.5 x 17.5	1.043 x 0.689	1	5,000
PLT8K104S04-1	PLT8K104S18-3	PLT8K104S39-2	30 x 20	1.181 x 0.787	3	2,000
PLT8K104S04-1/3	PLT8K104S18-3/3	PLT8K104S39-2/3	30 x 20	1.181 x 0.787	1	6,000
PLT8K111S04-1	PLT8K111S18-3	PLT8K111S39-2	32 x 9.5	1.260 x 0.374	3	2,000
PLT8K111S04-1/3	PLT8K111S18-3/3	PLT8K111S39-2/3	32 x 9.5	1.260 x 0.374	1	10,000
PLT8K115S04-1	PLT8K115S18-3	PLT8K115S39-2	38 x 19	1.496 x 0.748	1	2,000
PLT8K121S04-1	PLT8K121S18-3	PLT8K121S39-2	45 x 23	1.772 x 0.906	1	2,000
PLT8K130S04-1	PLT8K130S18-3	PLT8K130S39-2	50 x 23	1.969 x 0.906	1	2,000
PLT8K134S04-1	PLT8K134S18-3	PLT8K134S39-2	60 x 36	2.362 x 1.417	1	1,000
PLT8K135S04-1	PLT8K135S18-3	PLT8K135S39-2	65 x 35	2.559 x 1.378	1	1,000
PLT8K133S04-1	PLT8K133S18-3	PLT8K133S39-2	65 x 53	2.559 x 2.087	1	750
PLT8K136S04-1	PLT8K136S18-3	PLT8K136S39-2	70 x 48	2.756 x 1.890	1	1,000
PLT8K139S04-1	PLT8K139S18-3	PLT8K139S39-2	89 x 82	3.504 x 3.228	1	500
PLT8K140S04-1	PLT8K140S18-3	PLT8K140S39-2	101.6 x 23	4 x 0.906	1	2,000
PLT8K137S04-1	PLT8K137S18-3	PLT8K137S39-2	101.6 x 48	4 x 1.890	1	1,000
PLT8K138S04-1	PLT8K138S18-3	PLT8K138S39-2	101.6 x 74	4 x 2.913	1	500
PLT8K141S04-1	PLT8K141S18-3	PLT8K141S39-2	101.6 x 150	4 x 5.906	1	300

Order in multiples of 25 tags.

MTX-MK1 miniplotter



MTX-MK1 miniplotter

—
01 Provides complete customized marking on site for cables, wires, terminal blocks and components

—
02 Easy-to-use keyboard, display unit and pre-programmed product modules

—
03 Saves time and money when small production and additional markings are carried out, combined with rapid, customized deliveries from Partex

—
04 Designed for on-site marking of small and medium marking volumes



01



02



03



04

MTX-MK1 miniplotter

Miniplotter marking system specifications

Design

The MTX-MK1 marking system contains a plotter and inlays intended for Partex neutral wire, cable, component and terminal block markings. The marking information is transferred to the plotter thru a MTX-MK1-Cable (RS232) input from the keyboard. The marker inlays are quickly loaded either with individual cut markers or strips of markers. Flexible on-site operation with battery pack. MTX-MK1 is controlled from a program cassette thru an RS232 (MTX-MK1-Cable) interface to a PC computer.

Power

120/240 V

Keyboard

North American Industrial standard

Text height and width

Three text heights – small, medium and large – and three text widths – narrow, standard and wide. The height of text is automatically adapted to match type of profile and number of lines chosen. The number of characters possible on a line is shown in the display. The program makes it possible to decrease or increase the size of the text.

Plotter pens

Refill pens (etching ink) for marking on Partex products. Fibre-tip pen for testing. On Zerex sleeve, please use only drawing tip 0.25 mm with Partex Zerex ink.

Resistance

The products intended for MK1 are tested by the Swedish National Test and Research Institute according to the Partex Product Test Program.

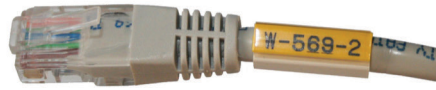
MTX-MK1 miniplotter

Applications

- 01 Terminal blocks with PP profiles
- 02 PP profile in a PTC sleeve mounted on a CAT 5 cable
- 03 PPA profile mounted on a component



01



02



03

Product and ordering information

Cat. no.	Profile	Profile width	Compact disc pack unit
PP-04600SN	Flat profile, fits PT+, PTC and PTM sleeves	4.6 mm	15 m
PP-09000SN	Flat profile, fits PM sleeves	9.0 mm	18 m
PP-06300SN9	Flat profile, fits Phoenix terminal blocks UT2.5, UTTB2.5, ST4, DT2.5, QTC, DT12.5	6.3 mm	15 m
PP-10000SN9	Flat profile, fits Entrelacs terminal blocks	10.2 mm	15 m
PP-11000SN9	Flat profile, fits Wagos Topjobs terminal blocks	11.0 mm	12 m
PPA09000SN	Flat profile with adhesive	9.0 mm	10 m

Technical data – Adhesive tape (PPA) peel adhesion on different surfaces

Material	Immediately N/cm	After 14 days N/cm
Steel	13.5	14.8
Aluminum	9.4	12.4
ABS	10.9	13.7
PC	13.5	13.8
PS	10.5	12.2
PET	9.4	10.7
PVC	9.3	13.5
PP	6.9	8.7
PE	5.5	5.8
Temperature resistance		Value
Short-term use		70 °C
Long-term use		60 °C
Mechanical properties		Value
Tensile strength		57.5 N/15 mm
Elongation		20–55%

MTX-MK1 miniplotter

Accessories



Product inlay (fixture)

Portable printer

- Operates on battery for up to 2 hours on one charge
- Recharging time: 2 hours

Weight and dimensions

- Printer: 2.2 kg (378 x 190 x 65 mm)
- Cable: 3.5 m
- Total weight (bag and kit): 6 kg (540 x 440 x 120 mm)

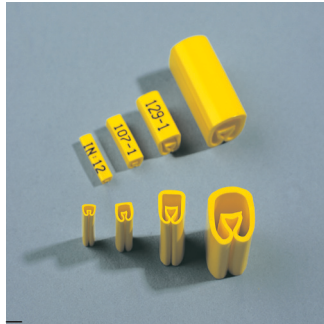
Cat. no.	Description	Size/product
MTX-MK1	Plotter	The MTX-MK1 basic kit includes plotter, case, MTX-MK1-Refill, MTX-Pen-035, power unit and manual on CD
MTX-MK1-PEN-018	Plotter pen	0.18 mm
MTX-MK1-PEN-025	Plotter pen	0.25 mm
MTX-MK1-PEN-035	Plotter pen	0.35 mm
MTX-MK1-PEN-050	Plotter pen	0.50 mm
MTX-MK1-PEN-070	Plotter pen	0.70 mm
MTX-MK1-PEN-100	Plotter pen	1.00 mm
MTX-MK1-REFILL	Ink refill cartridge	5 x 1 ml
MTX-MK1-CF	Cleaning solvent	10 ml
MTX-MK1-CF	Cleaning cartridge	2 x 10 ml
MTX-MK1-CUP	Cleaning cup	-
MTX-MK1-PAPLUS02	Product inlay (fixture)	PAPLUS02/PAZPLUS02
MTX-MK1-PAPLUS02ST	Product inlay (fixture)	PAPLUS02 STRIPS
MTX-MK1-PAPLUS1ST	Product inlay (fixture)	PAPLUS1 STRIPS

Cat. no.	Description	Size/product
MTX-MK1-PK2ST	Product inlay (fixture)	PK2 STRIPS
MTX-MK1-PC10	Product inlay (fixture)	PC10
MTX-MK1-PC20	Product inlay (fixture)	PC20
MTX-MK1-PC40	Product inlay (fixture)	PC40
MTX-MK1-PFC	Product inlay (fixture)	PFC
MTX-MK1-POH	Product inlay (fixture)	POH
MTX-MK1-PS	Product inlay (fixture)	PS
MTX-MK1-TX	Product inlay (fixture)	TX-96XXX
MTX-MK1-PGM-USB	Program cassette	-
MTX-MK1-PGM-PFC.V1	Program cassette	PFC
MTX-MK1-PGM-PO.USB	Program cassette	PO
MTX-MK1-PGM-FU	Data file upgrade	-
MTX-MK1-ACCU	Battery	PP60
MTX-MK1-CABLE	Data cable	RS232

MTX-MK1 miniplotter

MTX-MK1 – Wire marking: PAPLUS, PAZPLUS

— 01 “AN” Cut markers
— 02 Strip carton pack “PN”



01



02

Cat. no. neutral (blank) marking sleeves	AWG	Length (mm)	Capacity of markers per fixture	Packaging	Fixture
PAPLUS02015ANØ	22-16	15	18	200/bag	MTXMK102
PAPLUS02021ANØ	22-16	21	18	200/bag	MTXMK102
PAPLUS02027ANØ	22-16	27	18	200/bag	MTXMK102
PAPLUS10015ANØ	16-11	15	18	200/bag	MTXMK110
PAPLUS10021ANØ	16-11	21	18	200/bag	MTXMK110
PAPLUS10027ANØ	16-11	27	18	200/bag	MTXMK110
PAPLUS20015ANØ	13-5	15	11	100/bag	MTXMK120
PAPLUS20021ANØ	13-5	21	11	100/bag	MTXMK120
PAPLUS20027ANØ	13-5	27	11	100/bag	MTXMK120
PAPLUS20036ANØ	13-5	36	11	100/bag	MTXMK120
PAPLUS20042ANØ	13-5	42	11	100/bag	MTXMK120
PAPLUS30015ANØ	5-	15	9	20/bag	MTXMK130
PAPLUS30021ANØ	5-	21	9	20/bag	MTXMK130
PAPLUS30027ANØ	5-	27	9	20/bag	MTXMK130

Ø = Sleeve colour according to the international colour code

A = Cut markers.

N = Neutral

Halogen-free available by changing PAPLUS prefix to PAZPLUS

Example: PAPLUS02015AN4 = 15 mm length yellow, neutral (blank) cut markers

Cat. no. neutral (blank) marking sleeves	AWG	Length per strip	Strips x markers = qty per fixture	Strips x markers = qty per carton	Fixture
PAPLUS02015PNØ	22-16	12 x 15 = 180	4 x 12 = 48	CT/84 X 12 = 1,008	MTX-MK1-PAPLUS02ST*
PAPLUS02021PNØ	22-16	9 x 21 = 189	4 x 9 = 36	CT/112 X 9 = 1,008	MTX-MK1-PAPLUS02ST*
PAPLUS02027PNØ	22-16	7 x 27 = 189	4 x 7 = 28	CT/143 X 7 = 1,001	MTX-MK1-PAPLUS02ST*
PAPLUS02036PNØ	22-16	5 x 36 = 180	4 x 5 = 20	CT/150 X 5 = 750	MTX-MK1-PAPLUS02ST*
PAPLUS02042PNØ	22-16	4 x 42 = 168	4 x 4 = 16	CT/150 X 4 = 600	MTX-MK1-PAPLUS02ST*
PAPLUS10015PNØ	16-11	12 x 15 = 180	4 x 12 = 48	CT/84 X 12 = 1,008	MTX-MK1-PAPLUS1ST*
PAPLUS10021PNØ	16-11	9 x 21 = 189	4 x 9 = 36	CT/112 X 9 = 1,008	MTX-MK1-PAPLUS1ST*
PAPLUS10027PNØ	16-11	7 x 27 = 189	4 x 7 = 28	CT/130 X 7 = 910	MTX-MK1-PAPLUS1ST*
PAPLUS10036PNØ	16-11	5 x 36 = 180	4 x 5 = 20	CT/130 X 5 = 650	MTX-MK1-PAPLUS1ST*
PAPLUS10042PNØ	16-11	4 x 42 = 168	4 x 4 = 16	CT/130 X 4 = 520	MTX-MK1-PAPLUS1ST*

* We recommend drawing tip 0.25 mm on Zerex

K = Carton, P = Strip, N = Neutral, A = Cut markers in bags

PA international colour code. PAZ halogen-free in yellow and white. Other colours, please contact your regional sales office.

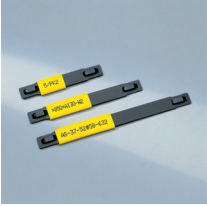

Material: PAPLUS = Soft PVC, PAZPLUS = Soft Zerex

Halogen-free available by changing PAPLUS prefix to PAZPLUS

Example: PAPLUS02015PN4 = A strip of 12 x 15 mm markers, yellow, neutral (blank) markers

MTX-MK1 miniplotter

MTX-MK1 – Cable marking: PK, PKZ

	Cat. no.	Sleeve length mm	Capacity qty/fixture	Packaging	Cat. no. fixture	Suitable Partex holder system
	PK-20015ANØ	15	10	20	MTX-MK1-PK2	Use with SMOH holders (see p. 53)
	PK-20021ANØ	21	10	20	MTX-MK1-PK2	Use with SMOH holders (see p. 53)
	PK-20027ANØ	27	10	20	MTX-MK1-PK2	Use with SMOH holders (see p. 53)
	PK-20Q25ANØ	25	10	20	MTX-MK1-PK2	Use with cable tie (see p. 53)
	PK-20Q40ANØ	40	10	20	MTX-MK1-PK2	Use with cable tie (see p. 53)
	PK-20021PNØ	21	3 x 9 = 27	9 x 50	MTX-MK1-PK2ST	Use with SMOH holders (see p. 53)
	PK-20027PNØ	27	3 x 7 = 21	7 x 50	MTX-MK1-PK2ST	Use with SMOH holders (see p. 53)
	PK-20036PNØ	36	3 x 5 = 15	5 x 50	MTX-MK1-PK2ST	Use with SMOH holders (see p. 53)
	PK-20057PNØ*	57	3 x 3 = 9	3 x 50	MTX-MK1-PK2ST	Use with SMOH holders (see p. 53)
	PK-20084PNØ**	84	3 x 2 = 6	2 x 50	MTX-MK1-PKZ2	Use with SMOH holders (see p. 53)

Ø Profile colour, 4 = yellow, 9 = white. Other colours, please contact your regional sales office

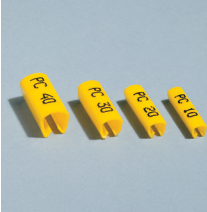
* Strips = 3 pcs semi cut sleeves ** Strips = 2 pcs semi cut. Material: PK = soft PVC (PKZ = soft Zerex)

For halogen-free, change prefix PK to PKZ

Example: PK20021AN4 = 21 mm length, yellow

MTX-MK1 – Wire marking: PC

- Open marker sleeve for already connected wires
- Securely positioned with help of strong barbs
- Fast snap-on installation
- Tools available for installation in hard-to-reach areas

	Cat. no.	AWG	Sleeve length mm	Capacity qty/fixture	Packaging	Cat. no. fixture
	PC10015ANØ	22-16	15	18	100/bag	MTX-MK1-PC10
	PC10021ANØ	22-16	21	18	100/bag	MTX-MK1-PC10
	PC10027ANØ	22-16	27	18	100/bag	MTX-MK1-PC10
	PC20015ANØ	16-12	15	18	100/bag	MTX-MK1-PC20
	PC20021ANØ	16-12	21	18	100/bag	MTX-MK1-PC20
	PC20027ANØ	16-12	27	18	100/bag	MTX-MK1-PC20
	PC40015ANØ	11-10	15	18	100/bag	MTX-MK1-PC40
	PC40021ANØ	11-10	21	18	100/bag	MTX-MK1-PC40
	PC40027ANØ	11-10	27	18	100/bag	MTX-MK1-PC40
	PC40036ANØ	11-10	36	18	100/bag	MTX-MK1-PC40

Ø profile colour, 4 = yellow, 9 = white. Example: PK20021AN4 = 21 mm length, yellow

MTX-MK1 miniplotter

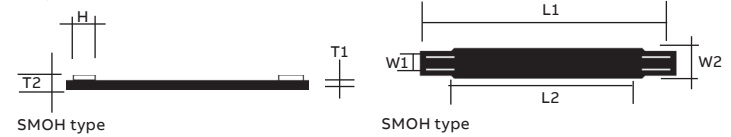
MTX-MK1 – Cable marker or holder: SMOH



- Holder for PO/POZ/PK/PKZ markers
- No tools needed for installation
- Easy to install with Ty-Rap cable ties
- SMOH holders can be used as on-site cable markers using Ty-Rap marking pen WT163M-1 (black)

Cat. no.	Width (W1) mm (in.)	Width (W2) mm (in.)	Thickness (T1) mm (in.)	Thickness (T2) mm (in.)	Raised bridge (H) mm (in.)	Length (L1) mm (in.)	Writeable (L2) mm (in.)	Std. pkg.	Cat. no. fixture	Capacity no./fixture
SMOH-07Ø	8.2 (0.323)	9.5 (0.374)	1.0 (0.04)	3.2 (0.125)	6.0 (0.236)	60.0 (2.36)	27.0 (1.06)	100	MTX-MK1-POH	3 x 2
SMOH-12Ø	8.2 (0.323)	9.5 (0.374)	1.0 (0.04)	3.2 (0.125)	6.0 (0.236)	82.0 (3.24)	50.0 (1.97)	100	MTX-MK1-POH	3 x 2
SMOH-18Ø	8.2 (0.323)	9.5 (0.374)	1.0 (0.04)	3.2 (0.125)	6.0 (0.236)	110.0 (4.33)	75.0 (2.95)	100	MTX-MK1-POH	3 x 2
SMOH-30Ø	8.2 (0.323)	9.5 (0.374)	1.0 (0.04)	3.2 (0.125)	6.0 (0.236)	152.0 (5.98)	124.0 (4.88)	100	MTX-MK1-POH	3 x 2
SMKH10-0	9.8 (0.385)	12.0 (0.472)	1.2 (0.05)	3.3 (0.130)	-	70.0 (2.76)	60.0 (2.36)	100	MTX-MK1-POH	3 x 2
SMKH20-0	9.0 (0.354)	12.0 (0.472)	1.2 (0.05)	3.3 (0.130)	-	100.0 (3.94)	90.0 (3.54)	100	MTX-MK1-POH	3 x 2

Diagrams



Ø 0 = Black, 4 = yellow, 9 = white. Material: Hard PVC. Example: SMOH07-4 = yellow, 60 mm

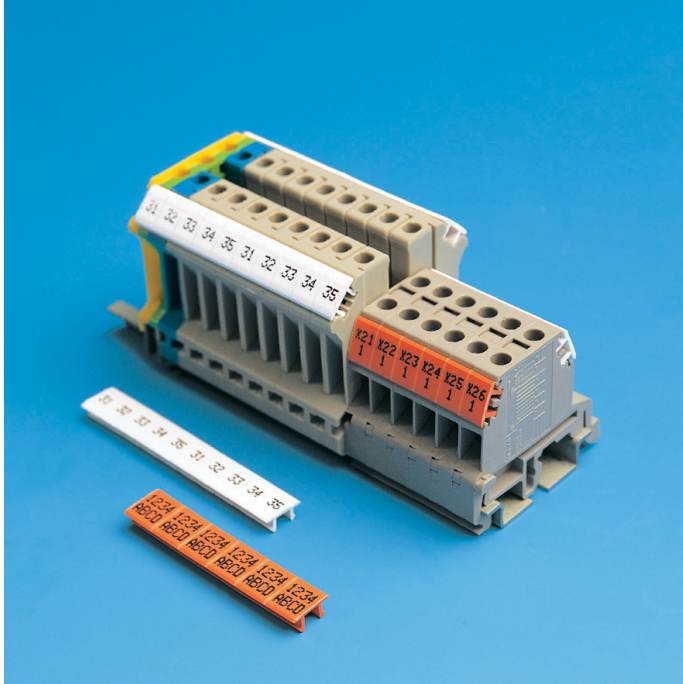
Recommended Ty-Rap cable ties



	Cat. no.	Bulk Cat. no.	Body width (in.)	Length (in.)	Max wire bundle dia. (in.)	Military standard part no.	Tensile strength (lb)	Std. pkg.	Bulk pkg.
Standard nylon 6/6 cable ties									
	TY523M	TY23M	0.093	3.62	0.625	MS3367-4	18	100	1,000
	TY52315M	TYB2315M	0.092	7.00	1.500	-	18	100	1,000
	TY5232M	TY232M	0.086	8.00	2.000	-	18	100	1,000
	TY5234M	TY234M	0.086	14.00	4.000	-	18	100	1,000
	TY524M	TY24M	0.140	5.50	1.125	MS3367-5	40	100	1,000
	TY5242M	TY242M	0.140	8.19	2.000	-	40	100	1,000
	TY526M	TY26M	0.140	11.10	3.000	-	30	100	1,000
	TY5244M	TY244M	0.140	14.50	4.000	-	30	100	1,000
	TY525M	TY25M	0.185	7.31	1.750	MS3367-1	50	100	1,000
	TY5253M	TY253M	0.187	11.6	3.000	MS3367-7	50	100	1,000
	TY528M	TY28M	0.187	14.20	4.000	MS3367-2	50	100	1,000
Nylon 6/6 weather and UV resistant									
	TY523MX	TY23MX	0.093	3.62	0.625	MS3367-4	18	100	1,000
	TY52315MX	TYB2315MX	0.092	7.00	1.500	-	18	100	1,000
	TY5232MX	TY232MX	0.086	8.00	2.000	-	18	100	1,000
	TY5234MX	TY234MX	0.086	14.00	4.000	-	18	100	1,000
	TY524MX	TY24MX	0.140	5.50	1.125	MS3367-5	40	100	1,000
	TY5242MX	TY242MX	0.140	8.19	2.000	-	40	100	1,000
	TY526MX	TY26MX	0.140	11.10	3.000	-	30	100	1,000
	TY5244MX	TY244MX	0.140	14.50	4.000	-	30	100	1,000
	TY525MX	TY25MX	0.185	7.31	1.750	MS3367-1	50	100	1,000
	TY5253MX	TY253MX	0.187	11.6	3.000	MS3367-7	50	100	1,000
	TY528MX	TY28MX	0.187	14.20	4.000	MS3367-2	50	100	1,000

MTX-MK1 miniplotter

MTX-MK1 – Terminal block marking: TX



Design

Terminal block marking with strong hooks for safe snap mounting. (TX-96 matches Phoenix, Entrelec, Wagos, and TX-61051 matches Weidmüller, Conta-Clip and others with similar design)

Material

Cadmium-free, stiff PVC material of Partex formula

Colours

White or orange

Temperature range

Shape permanence between -30 °C and 60 °C
(-22 °F to 140 °F) (PVC)

Cat. no.	Intended for terminal block (B1) (mm)	Height (H) (mm)	Markers/strip	Strips/inlay	Length (B2) 10 markers (mm)	Cat. no. fixture
TX-96050PNØ	5.0	9.6	6	1 x 10	50.0	MTX-MK1-TX
TX-96052PNØ	5.2	9.6	6	1 x 10	52.0	MTX-MK1-TX
TX-96060PNØ	6.0	9.6	6	1 x 10	60.0	MTX-MK1-TX
TX-96062PNØ	6.2	9.6	6	1 x 10	62.0	MTX-MK1-TX
TX-96073PNØ	7.3	9.6	6	1 x 10	73.0	MTX-MK1-TX
TX-96080PNØ	8.0	9.6	6	1 x 10	80.0	MTX-MK1-TX
TX-96082PNØ	8.2	9.6	6	1 x 10	82.0	MTX-MK1-TX
TX-96100PNØ	10.0	9.6	6	1 x 10	100.0	MTX-MK1-TX
TX-96102PNØ	10.2	9.6	6	1 x 10	102.0	MTX-MK1-TX
TX-96120PNØ	12.0	9.6	6	1 x 10	72.0 (6 markers)	MTX-MK1-TX
TX-96141PNØ	14.1	9.6	3	1 x 10	84.5 (6 markers)	MTX-MK1-TX
TX-96151PNØ	15.1	9.6	3	1 x 10	90.6 (6 markers)	MTX-MK1-TX
TX-61051PNØ	5.1	6.1	15	1 x 10	51.0	MTX-MK1-TX61

Diagram



Material: TX = hard PVC

P = strip of 10 markers, N = neutral (blank)

Ø colours: 3 = orange, 9 = white

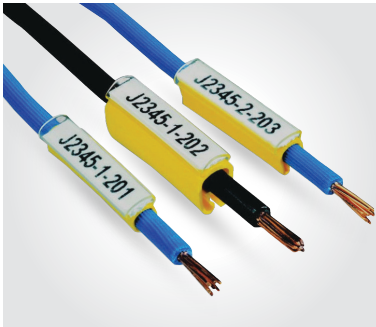
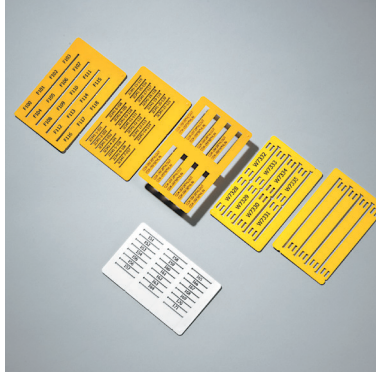
Example: TX-96050P9 = 5.0 mm, white

TX-96 Series matches Phoenix, Entrelec and Wagos terminal blocks.

TX-61051 Series matches Weidmüller, Conta-Clip and others with similar design.

MTX-MK1 miniplotter

MTX-MK1 – X-card marking system: PFC



- Fast mounting, easy breakoff cards with precut or moulded marker tags
- Easily detachable tags are put directly into various tag holder systems
- The hard tags can be rapidly mounted, before or after connecting wires and cables

Cat. no.	Description	Marker tag length x height mm	Marker tags per card	Marker tags per box	Material	Suitable holder system
PFC04212KAØ	Marker tag – wire	12 x 4.2	21	525	ABS	PTPLUS (refer to p. 65)
PFC04215KAØ	Marker tag – wire	15 x 4.2	21	525	ABS	PTPLUS (refer to p. 65)
PFC04218KAØ	Marker tag – wire	18 x 4.2	21	525	ABS	PTPLUS (refer to p. 65)
PFC04221KAØ	Marker tag – wire	21 x 4.2	21	525	ABS	PTPLUS (refer to p. 65)
PFC04230KAØ	Marker tag – wire	30 x 4.2	14	350	ABS	PTPLUS (refer to p. 65)
PFC07533KAØ	Marker tag – cable	33 x 7.5	9	225	ABS	PM24 (refer to p. 63)
PFC09518KAØ	Marker tag – component/cable	18 x 9.5	20	500	ABS	Ty-Rap cable tie mounting
PFC09540KAØ	Marker tag – cable marking	40 x 9.5	8	200	Polyamid/PA11	(refer to p. 53)
PFC09580KAØ	Marker tag – cable marking	80 x 9.5	4	100	Polyamid/PA11	

Ø Colours: 4 yellow, 9 white.

Dimensions in mm (nominal)

Cat. no.	AWG	Length (mm)	Width (mm)	Height (mm)
PTPLUS02	22–16	12/15/18/21/30	5	5
PTPLUS10	16–11	12/15/18/21/30	5	7
PTPLUS20	13–5	12/15/18/21/30	6	10
PTPLUS30	5–1	12/15/18/21/30	10	19
PTPLUS40	0	15/21/30	–	–

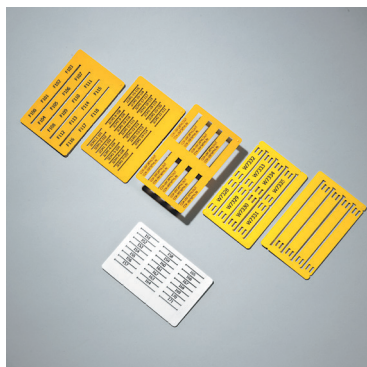
MTX-MK3

Applications



Product and ordering information

Cat. no.	Description	Contents
MTX-MK3-CLEANKIT	Cleaning kit for MTX-MK3-P330	Swab + cleaning cards + rollers
MTX-MK3-CR	Cleaning roller for MTX-MK3	To remove dust from the card before printing
MTX-MK3-F301E	Printer ribbon F301 black	-
MTX-MK3-RC330	Printer ribbon RC330 colour	-



- The MTX-MK3-P330 system contains several different card types that cover the need for cable, wire and component markers
- With the MTX-MK3-P330, it is now possible to print in colour. (This can only be done if you have the latest version of WinSign.)

Product and ordering information

Cat. no.	Description	Marker tag length x height mm (in)	Marker tags per card	Marker tags per box	Material	Suitable Partex holder system
PFC04212KAØ	Marker tag – wire	12 x 4.2	21	525	ABS	PTPLUS type (refer to p. 65)
PFC04215KAØ	Marker tag – wire	15 x 4.2	21	525	ABS	
PFC04218KAØ	Marker tag – wire	18 x 4.2	21	525	ABS	
PFC04221KAØ	Marker tag – wire	21 x 4.2	21	525	ABS	
PFC07533KAØ	Marker tag – cable	33 x 7.5	9	225	ABS	PM type (refer to p. 63)
PFC09518KAØ	Marker tag – component/cable	18 x 9.5	20	500	ABS	Cable ties (refer to p. 53)
PFC09540KAØ	Marker tag – cable marking	40 x 9.5	8	200	Polyamid/PA11	
PFC09580KAØ	Marker tag – cable marking	80 x 9.5	4	100	Polyamid/PA11	

Ø = Card Colours, 4 = Yellow, 9 = White

WinSign

WinSign software

01 WinSign software is ideal for project handling, production and printout of customized marking products on site

02 Software in Windows environment with database handling adapted to import/export on text files



01



02

Cat. no.

WSG-NG-UPGRADE

Information

Upgrade your older version to the latest one

Medium-wall heat-shrinkable tubing

- System demands
- Processor type
 - Min. Pentium II
- RAM memory
 - 64 MB
- Hard drive
 - At least 10 MB free space
- CD-reader
 - Yes

Can run under these environments

- Windows 98 SE (second edition)
- Windows NT with at least Explorer 4.0x
- Windows ME
- Windows 2000
- Windows XP

We recommend a more powerful computer because it will execute the processes quicker.

WinSign

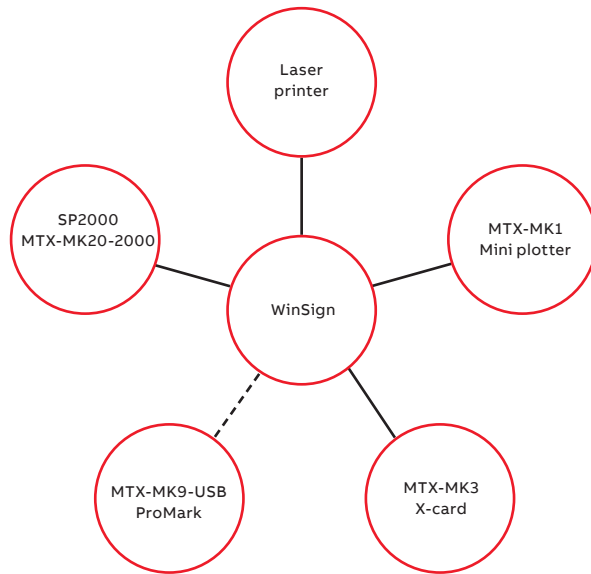
Specifications – Marking methods

What can WinSign do?

WinSign software is ideal for project handling, production and printout of Partex customized marking products on site. The software operates under a Windows platform and can import files from Microsoft Excel, CAD or pure text files. The information that is created in WinSign is saved in a database format. All this is controlled by the software's database engine.

WinSign makes it possible to print only the markers you need right away when you are installing a cabinet, etc. This means the information will be accessible quickly for production, which reduces the lead time.

WinSign controls almost all marking machines.



Structure

You can work in two ways with WinSign. You can create a whole project with traceability so that you can search for information or you can easily type information in the “direct marking” mode to print markers right away.

When creating a project, a project manager using WinSign can type in all the marking information for all the different cabinets and machines when he is still at the office. If the electrician has access to this WinSign file, he can print out the information on site only for the cabinet he is working on. If he has any questions, he can call the project manager, because he can see in WinSign who created the file and his phone number.*

The “direct marking” mode is similar to the project mode. In “direct marking,” you don’t need to type in any information that can be traced later on. You can print the information right away on any of the Partex marking machines.

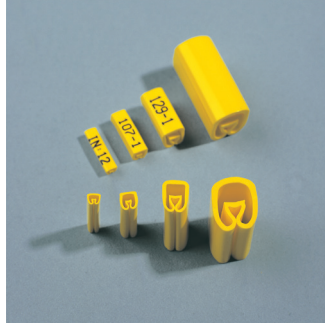
*The masculine form is used as gender neutral and includes men and women.

Some WinSign functions:

- Imports both marking information and number of markers required from Excel
- Imports information from EPLAN and ELPRO CAD (contact your regional sales office for more information)
- Number generator: ordinary and alphanumeric
- Unique production windows for each printer/machine
- The marker information is typed in a grid that looks like Excel
- Updates and downloads are available on www.tnb-id.ca

WinSign

Printers/machines that can be controlled by WinSign

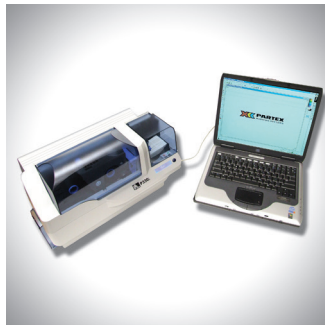
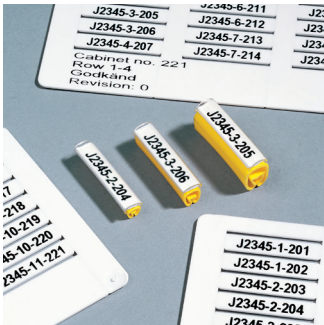


MTX-MK1 mini plotter

A marking system suited for smaller production. It is excellent to use when you have a revision and used multi-character Partex markers for the earlier installation. It's easy to use, portable and can be operated from its own keyboard or from a computer.

Inlay fixtures for MTX-MK1 for marking of:

- Wires
- Positions and components
- Cables
- Terminal blocks



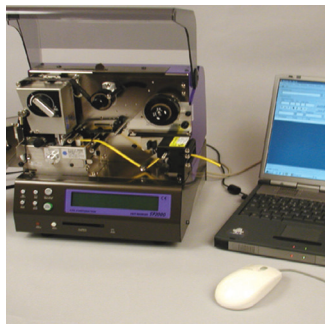
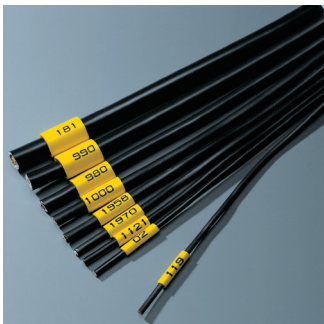
MTX-MK3 X-card printer

Card printer for thermal transfer printout of marking tags out of a card in a credit card format. The tags are easily mounted into various holder systems.

Production of:

- Wire markers
- Cable markers
- Components markers

The systems also have cards with various labels sizes. The printer must be used with Partex WinSign software included when you buy an MTX-MK3-P330.



MTX-MK20-SP2000 marking system

A marking machine for profiles MTX-MK20-SP2000 that feeds, prints and automatically cuts sleeves to the desired length. Controlled from own keyboard or from a PC with WinSign. High production capacity.

Production of:

- Wire markers
- Cable markers
- Heat-shrink markers

PF/PFA

PF label material

- Label material for cables, wires, cabinets and components
- For holder systems PTPLUS, PTZPLUS, PM
- Easy to separate in rigid polyester foil, specially pre-processed for printing
- Halogen-free
- Print-out by matrix or laser printer (HP2100/2200)
- A low-cost two-component solution for marking before and after connection of wires and cables

Specifications

Design

The PF labels come on a perforated sheet with tractor feed. Individual labels are detachable or picked in any order to facilitate mounting and overview. This enables simplified sheet feeding through a laser printer. Special top coating allows multiple laser printer feedings of same sheet. The PF marking labels are intended to be mounted in PTPLUS, PTZPLUS, PTC or PM holders to enable wire, cable and component marking.

Material

Polyester foil, specially pre-processed for printing.

Colours

Sheet is white on one side, yellow on the other side.

Print/text

WinSign for your own choice of readability, number of characters and lines required.

Printing equipment

Industrial matrix printer for PF labels. Laser printer with straight feed of sheets for PF marker labels.

Printout with Partex WinSign software.

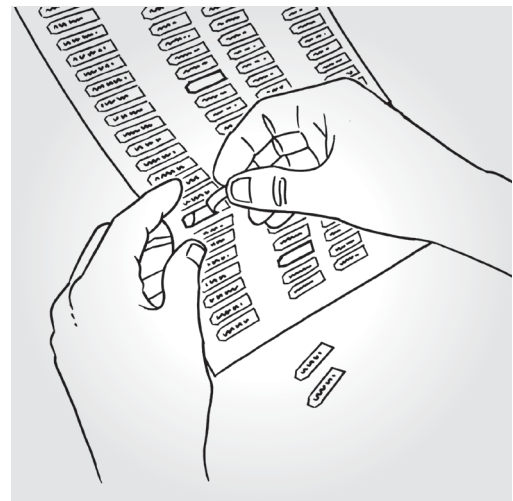
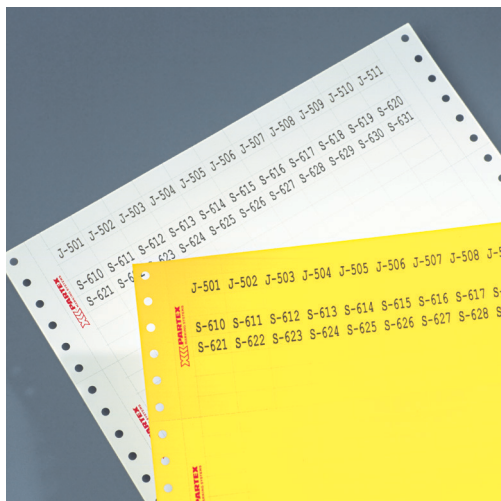
Temperature range

From -30 °C to 120 °C (-22 °F to 248 °F)

Note: Withstands laser printing.

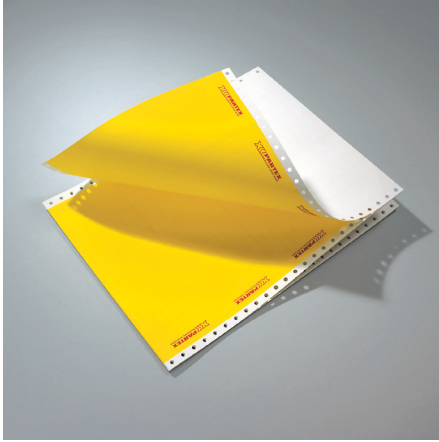
Durability

Withstands most solvents. For application in hostile environments, please contact your regional sales office for information. For label holder systems, see separate product data sheets.



PF/PFA

Applications



Dimensions in mm (nominal)

Cat. no.	Height (H) (mm)	Length (L) (mm)
PF-10015KT49	4.6	15.0
PF-10021KT49	4.6	21.0
PF-20018KT49	9.5	17.5
PF-07533KT49	7.6 – 7.8	33.0

Diagram



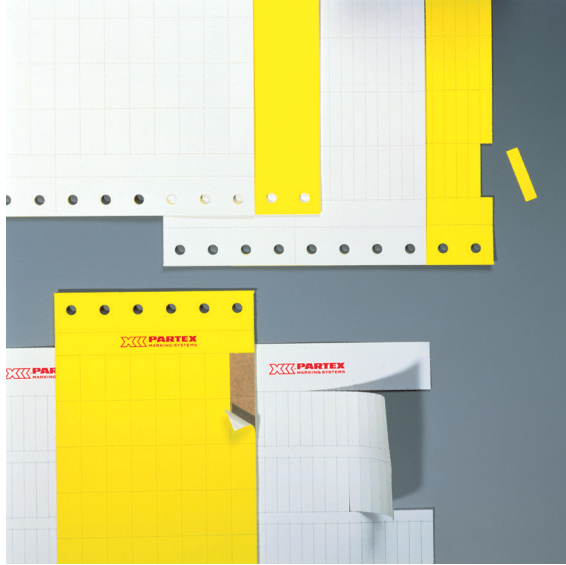
Size and packaging

Cat. no.	Number of labels per sheet	Number of sheets per pack	Number of labels per pack	Colour	Sheet format
PF-10015KT49	66 x 12	10	7,920	Yellow/ white	A4 width, 12 in. length
PF-10021KT49	66 x 9	10	5,940		A4 width, 12 in. length
PF-20018KT49	32 x 11	10	3,520		A4 width, 12 in. length
PF-07533KT49	25 x 4	10	1,000	White	A4 width, 12 in. length

PF-tractor feed sheets for matrix printer are coloured yellow on one side and white on the other, are printable on both sides and only applicable for PF10 OCH PF-20.
One order = 10 sheets

PF/PFA

Specifications – PF label material



- Halogen-free self-adhesive label on sheet for direct marking of components in control cabinets
- Label modules pre-perforated in standardized 17.5 mm units
- Print-out by laser printer
- Installation time can be 4 times faster than label combination systems

Design

Perforated self-adhesive display material with adhesive on paper base. Folded sheets A4 width and tractor feed. 12 in. sheet length with tear initiation. The PFA label is intended for component marking with the standardized width of 17.5 mm.

Material

Self-adhesive polyester foil, specially pre-processed for printing.

Colours

White or yellow.

Temperature range

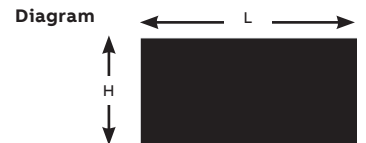
From -30 °C to 120 °C (-22 °F to 248 °F)

Note: Withstands laser printing.

Durability

Withstands most solvents. For application in hostile environments, please contact your regional sales office for information.

Cat. no.	Height (mm)	Length (mm)
PFA20018KT	9.5	17.5



Cat. no.	Number of labels (lines x columns)	Number of 12 in. sheets/pack	Total number of labels/pack
PFA20018KTØ	32 x 11	10	3520

Ø = 4 yellow; 9 white
One order = 10 sheets

PM

PM cable marking for PF labels



- Transparent holder for cable marking with Partex marking labels, tapes and tags for series PF, PL, PP or PFC
- Four lengths, three widths cover most cable marking demands
- Fitting and fastening with Ty-Rap cable ties (TY524MX recommended)
- The label is easily inserted into the holder, providing fast installation and protection of the marking

Specifications

Design

Holder for marker tags with punched holes for mounting with cable ties. Two standard lengths in two sizes, 9 mm and 12 mm widths.

Suitable marker labels and tags are PF on an A4 size sheet and tags on PFC X-cards in credit card formats. ProMark PP profile tags and PL tapes can also be used. The labels or tags are easily pushed into the holder and will be protected from dust, oil, etc.

Material

Cadmium- and silicon-free soft PVC according to special formula.

Colours

Transparent

Temperature range

Shape permanence from -30 °C to 60 °C (-22 °F to 140 °F)

Resistance

The product is tested by the Swedish National Test and Research Institute according to the Partex Product Test Program and has the following test properties:

- Flammability resistance: UL94-V0
- Resistance to UV radiation: corresponds to 1 year outdoors in the south of Sweden
- Chemical resistance: meets Partex product test and aging program criteria
- Thermal resistance: meets norms of Partex Product Test Program standards.

For application in hostile environments, please contact your regional sales office for information.

PM

Marking methods

Dimensions in mm (nominal)

Cat. no.	Length (L)	Width (B1) (mm)	Thickness (T) (mm)	Size of holes (S) (mm)	Width (B2) (mm)
PM-10033AN	33 mm	6	1.5	3	5
PM-24033AN	33 mm	13.9	2.5	3.9	12.5
PM-20066AN	66 mm	11.3	2.2	3	10
PM-20QKNT	20 m	11.3	2.2	3	10
PM-24KNT	20 m	13.9	2.5	–	–
PM-24QKNT	20 m	13.9	2.5	3.9	12.5
PM-24SNT	4 m	13.9	13.9	–	–
PM-24QSNT	4 m	13.9	13.9	3.9	10



QKNT = Profiles ready-punched at 10 mm intervals, 20 m per carton.

KNT = Unpunched profiles, 20 m per carton.

AN = Cut marker holders in standard lengths.

QSNT = Profiles ready-punched at 100 mm intervals, mounted on compact disc.

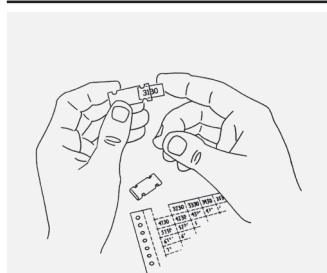
SNT = Unpunched profile on compact disc.

Size and packaging

Diagrams	Cat. no.	Description	Number/pack
	PM-10033AN	PM10/33 transparent holder 33 mm cut loose in bag	100 pcs
	PM-20033AN	PM20/33 transparent holder 33 mm cut loose in bag	100 pcs
	PM-24033AN	PM20/45 transparent holder 45 mm cut loose in bag	100 pcs
	PM-20066AN	PM20/66 transparent holder 66 mm cut loose in bag	50 pcs
	PM-24033AN	PM24/33 transparent holder 33 mm cut loose in bag	100 pcs
	PM-24066AN	PM24/66 transparent holder 66 mm cut loose in bag	50 pcs
	PM-240094AN	PM24/94 transparent holder 94 mm cut loose in bag	50 pcs
	PM-24KNT	PM24 profile transparent in carton	20 m
	PM-24QKNT	PM24 profile punched transparent in carton	20 m
	PM-20SNT	PM20 profile transparent	5 m
	PM-20QSNT	PM20 profile punched transparent on compact disc	5 m
	PM-24SNT	PM24 profile transparent on compact disc	4 m
	PM-24QSNT	PM24 profile punched transparent on compact disc	4 m

Accessories

Cat. no.	Suitable marking label	Label height (mm)
PM-10033AN	PF10021, PP-04200SN	4.2
PM-20033AN	PF20018, ProMark PP-09000SN	9.0
PM-20045AN	MTX-MK9-PL090CN, MK8-PL090CN, ProMark PP-09000SN	9.0
PM-24033AN	PF20018 1 pce, PFC09518KA	12.0
PM-20066AN	PF20018; 1, 2 or 3 modules, PFC09518KA, ProMark PP-09000SN, MK9-PL090CN, MK8-PL090CN	9.0
PM-24066AN	MK9-PL012CN PF20018; 1, 2 or 3 modules, PFC09518KA	12.0
PM-24094AN	MK9-PL090CN	12.0



PTPLUS

PTPLUS wire marker holder for PF labels

- Improved holder similar to PA profile with oval-shaped pocket for marker labels and tags
- The marker pocket's resilient design protects and fastens marker tag
- Fast and easy assembly of marker by applying pressure once on marker pocket
- The flexible bellows design of the holder allows rapid and adaptable mounting on wires and cables

Specifications

Design

PTPLUS is a closed marker holder of improved bellows design with a pocket to hold marker tags of types PF, PFC or PP. The new bellows design with grooves decreases the friction up to 50% when the sleeve is pushed on the wire. The holder is transparent and is mounted directly on the cable or wire before assembly. The marker tag can be affixed before or after assembly. The holder does not require much space. PTPLUS02 and PTPLUS10 fit wires to 5 mm terminal block widths.

Material

Cadmium- and silicon-free soft PVC according to Partex formula.

Colours

Transparent

Temperature range

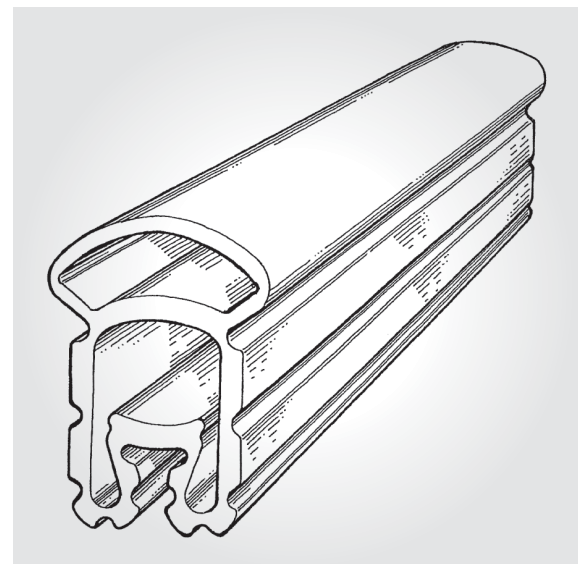
Shape permanence from -30 °C to 60 °C (-22 °F to 140 °F)

Note: Only the sleeve.

Resistance

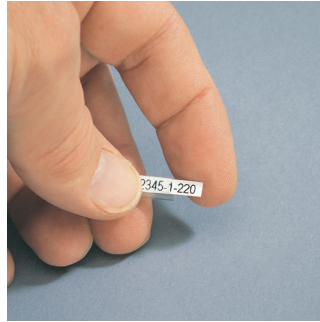
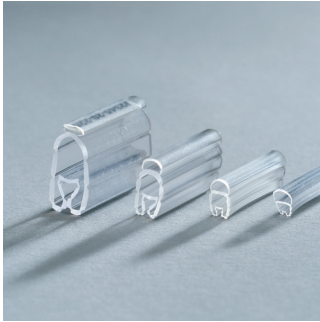
The product is tested by the Swedish Test and Research institute according to the Partex Product Test Program and has the following test properties:

- Flammability resistance: UL94-VO
- Resistance to UV radiation: corresponds to 1 year outdoors in the south of Sweden
- Chemical resistance: meets Partex Product Test Program criteria (except for battery acid)
- Thermal and aging resistance: meets Partex Product Test Program standards



PTPLUS

Application



Dimensions in mm (nominal)

Diagrams	Cat. no.	AWG	Length	Width	Height
	PTPLUS02	22-16	12/15/18/21/30	5	5
	PTPLUS10	16-11	12/15/18/21/30	5	7
	PTPLUS20	13-5	12/15/18/21/30	6	10
	PTPLUS30	5-	12/15/18/21/30	10	19
	PTPLUS40	0	15/21/30	-	-

Size and packaging

Cat. no.	Diameter mm	Intended for marker size (in.)	Area mm ²	AWG	Qty. pack	Suitable PF labels	Suitable PFC tags	Suitable PP profile
PTPLUS02012A	~1.3 – 3.0	0.051 – 0.118	~0.25 – 1.5	~ 22 – 16	200 pcs	-	PFC04212	PP-04600SN
PTPLUS10012A	~2.5 – 5.0	0.098 – 0.196	~1.5 – 4.0	~ 16 – 11	200 pcs	-	PFC04212	PP-04600SN
PTPLUS20012A	~4.0 – 10.0	0.157 – 0.393	~2.5 – 15.0	~ 13 – 5	100 pcs	-	PFC04212	PP-04600SN
PTPLUS30012A	~8.0 – 16.0	0.314 – 0.629	~16.0 – 70.0	~ 5 – 3/0	50 pcs	-	PFC04212	PP-04600SN
PTPLUS02015A	~1.3 – 3.0	0.051 – 0.118	~0.25 – 1.5	~ 22 – 16	200 pcs	PF-10015	PFC04215	PP-04600SN
PTPLUS10015A	~2.5 – 5.0	0.098 – 0.196	~1.5 – 4.0	~ 16 – 11	200 pcs	PF-10015	PFC04215	PP-04600SN
PTPLUS20015A	~4.0 – 10.0	0.157 – 0.393	~2.5 – 15.0	~ 13 – 5	100 pcs	PF-10015	PFC04215	PP-04600SN
PTPLUS30015A	~8.0 – 16.0	0.314 – 0.629	~16.0 – 70.0	~ 5 – 3/0	50 pcs	PF-10015	PFC04215	PP-04600SN
PTPLUS40015A	~16.0 – 22.0	-	~ 50.0 – 150.0	~ 0	50 pcs	PF-10015	PFC04215	PP-04600SN
PTPLUS02018A	~1.3 – 3.0	0.051 – 0.118	~0.25 – 1.5	~ 22 – 16	200 pcs	-	PFC04218	PP-04600SN
PTPLUS10018A	~2.5 – 5.0	0.098 – 0.196	~1.5 – 4.0	~ 16 – 11	200 pcs	-	PFC04218	PP-04600SN
PTPLUS20018A	~4.0 – 10.0	0.157 – 0.393	~2.5 – 15.0	~ 13 – 5	100 pcs	-	PFC04218	PP-04600SN
PTPLUS30018A	~8.0 – 16.0	0.314 – 0.629	~16.0 – 70.0	~ 5 – 3/0	50 pcs	-	PFC04218	PP-04600SN
PTPLUS02021A	~1.3 – 3.0	0.051 – 0.118	~0.25 – 1.5	~ 22 – 16	200 pcs	PF-10021	PFC04221	PP-04600SN
PTPLUS10021A	~2.5 – 5.0	0.098 – 0.196	~1.5 – 4.0	~ 16 – 11	200 pcs	PF-10021	PFC04221	PP-04600SN
PTPLUS20021A	~4.0 – 10.0	0.157 – 0.393	~2.5 – 15.0	~ 13 – 5	100 pcs	PF-10021	PFC04221	PP-04600SN
PTPLUS30021A	~8.0 – 16.0	0.314 – 0.629	~16.0 – 70.0	~ 5 – 3/0	50 pcs	PF-10021	PFC04221	PP-04600SN
PTPLUS40021A	~16.0 – 22.0	-	~ 50.0 – 150.0	~ 0	50 pcs	PF-10021	PFC04221	PP-04600SN
PTPLUS02030A	~1.3 – 3.0	0.051 – 0.118	~0.25 – 1.5	~ 22 – 16	200 pcs	-	PFC04230	PP-04600SN
PTPLUS10030A	~2.5 – 5.0	0.098 – 0.196	~1.5 – 4.0	~ 16 – 11	200 pcs	-	PFC04230	PP-04600SN
PTPLUS20030A	~4.0 – 10.0	0.157 – 0.393	~2.5 – 15.0	~ 13 – 5	100 pcs	-	PFC04230	PP-04600SN
PTPLUS30030A	~8.0 – 16.0	0.314 – 0.629	~16.0 – 70.0	~ 5 – 3/0	50 pcs	-	PFC04230	PP-04600SN
PTPLUS40030A	~16.0 – 22.0	0.629 – 0.866	~ 50.0 – 150.0	~ 0	50 pcs	-	PFC04230	PP-04600SN