

## Mounting bases for heavy-duty applications

### Framing channel clamp



#### Characteristics

- Quick and easy to install on existing metal framing channel
- Designed for indoor or outdoor use and heavy-duty applications
- Installs with a push and twist
- Smooth design protects cable insulation
- Takes range of cable diameters

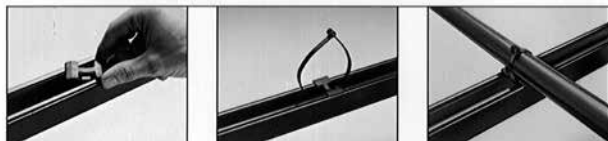
#### Technical information

- Material: Special polyamide resistant to impact and weather conditions
- Temperature range: -40°C to +85°C (-40°F to +185°F)
- Mechanical strength: 120 lbs (540 N)

### Framing channel clamp

Cat. n°	Profile width		[mm]	For tie width up to		Std. pkg. [pcs]
	[mm]	[in.]		[in.]		
TC5363X	38 and 41	1½ and 1⅝	7.6	0.30	50	

### Application



## Mounting bases for heavy-duty applications

### Heavy duty mounting bases – Screw / dowel



#### Characteristics

- Tie mounting base for outdoor installation
- UV-resistant
- A strong, weatherproof and durable outdoor fastening solution for pipes, hoses, cables, etc.

Cat. n°. TC5355 to TC5357

- For screw-fastening
- Ergonomically shaped for trouble-free installation



Cat. n°. TC5358 and TC5359

- Built-in plug for mounting into walls
- Easy to install: the plug is simply hammered into a hole
- The lamellar plug ensures high tensile strength and durability

#### Technical information

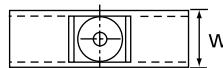
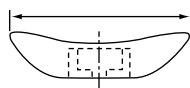
- Material: polyamide 6.6
- Temperature range: -40°C to +85°C (-40°F to +185°F)
- Colour: Black
- Mounting method: Screw (for Cat. no. TC5355 to TC5357 only)
- Flammability rating: UL 94 V-2
- Halogen free, silicone free

### Heavy duty mounting bases – Screw / dowel

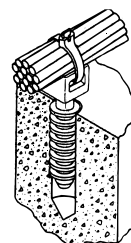
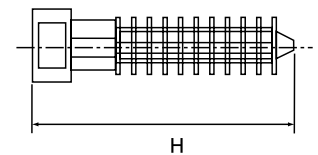
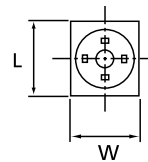
Cat. n°.	Dimensions						For tie width up to		Mounting hole diameter		Mounting method	Std. pkg. [pcs]
	[mm]	H [in.]	[mm]	W [in.]	[mm]	L [in.]			[mm]	[in.]		
<b>Mounting cradle</b>												
TC5355	15.9	0.63	19.1	0.75	44.5	1.75	12.7	0.5	4.6	0.18	screw #8	25
TC5356	15.9	0.63	19.1	0.75	44.5	1.75	12.7	0.5	5.2	0.20	screw #10	25
TC5357	15.9	0.63	19.1	0.75	44.5	1.75	12.7	0.5	6.7	0.26	screw ¼"	25
<b>Wall plug</b>												
TC5358	31.8	1.25	9.9	0.39	9.9	0.39	4.8	0.19	6.4	0.25	–	100
TC5359	38.4	1.51	19.1	0.75	19.1	0.75	12.7	0.5	9.5	0.37	–	50

### Diagrams

TC5355-TC5356-TC5357



TC5358-TC5359



## Mounting bases for heavy-duty applications

### Stud mount fastening system



The ABB Stud mount fastening system is a fast and simple harnessing method for neat, versatile, cord, cable, hose, and wire management. Using a custom drill bit for your  $\frac{3}{8}$  in. power drill, the stud mount base is quickly attached onto a threaded stud or bolt to the proper torque—every time. The innovative “X” design of the base reliably supports many types of cable or hose assemblies using a wide range of conventional Ty-Rap cable ties.

#### Characteristics

- Great for harnessing wires, cables and hoses to truck and trailer chassis
- Fast, easy installation, using standard  $\frac{3}{8}$  in. power drill and application tool or simply hammer on
- Unlimited harnessing flexibility using conventional Ty-Rap cable ties
- Custom drill bit quickly installs base to proper torque – won't crack or break mounting base due to being overtightened
- Unique 4-way multi-directional design



Weather  
resistant

- 10-position harness capability
- Available for  $\frac{3}{8}$  in.,  $\frac{1}{2}$  in.,  $\frac{5}{8}$  in., and  $\frac{3}{4}$  in. stud/ bolt sizes
- Self-tapping thread design for reliable installation onto stud
- High pull-out strength of 500+ lb.

#### Technical information

- Material: Impact-resistant weatherable black polyamide 6.6
- Temperature range: -40°C to +85°C (-40°F to +185°F)
- Colour: Black

#### Stud mount fastening system

Cat. n°.	Description	Stud size [in.]	Std. pkg. [pcs]
XMNY-375-0-D	Mount fastener	$\frac{3}{8}$	500
XMNY-500-0-D	Mount fastener	$\frac{1}{2}$	500
XMNY-625-0-D	Mount fastener	$\frac{5}{8}$	500
XMNY-750-0-D	Mount fastener	$\frac{3}{4}$	500
WTXM	Application tool	–	1



Virtually unlimited harnessing flexibility is provided in the unique 10-position harness design of the Stud Mount base.



During installation, the custom Stud Mount drill bit application tool ejects itself from mounting base, ensuring proper torque and preventing cracking or breaking of the mount from being overtightened.