

new product

NSF cUL Nexus®Pro



RRAU SERIES

Recessed architectural battery unit

FEATURES

- Recessed installation in T-bar suspended ceiling and easily spring mounted in Gyproc ceiling
- All-metal backbox enclosure
- Thermoplastic rectangular fixture with additional round trim-plate, white finish
- Long-life, high-temperature rated lithium battery
- Infrared remote test control (up to 30ft)
- Two-wire universal AC input: 120 – 347VAC 50-60Hz
- 90 minutes of emergency lighting
- Fixed optics, optimized light distribution for ceiling heights of eight to 12 ft
- Four high-intensity LED sources with redundant connections; CCT 5000K
- Optional housing rated for plenum or insulated ceilings (IC)
- Black thermoplastic decorative trim-plates
- Power over ethernet supply (requires a dedicated PoE switch powered by unswitched AC line) available
- Nexus®Pro: IOT emergency lighting monitoring system optional
- Fixed, square distribution pattern up to 12-ft ceilings
- Self-test and diagnostic functions
- Listed NSF, splash non-food zones
- Certified cUL to CSA 22.2 No.141-15
- 1-year limited warranty
See warranty details at: www.ready-lite.ca



Remote test control

SUGGESTED SPECIFICATIONS

Supply and install the **RRAU Series** of recessed emergency lighting unit from **Ready-Lite®**. The unit construction shall include an all-metal housing and a thermoplastic rectangular trim-plate with a detachable circular trim ring for choice of aesthetics. The optics shall be an impact-resistant polycarbonate lens with fixed light distribution, optimized for ceilings of 8 to 12-ft height. The housing shall include an isolated compartment for electrical connections and a detachable cover with knockouts for electrical supplies. The unit shall include a hardware kit for installation in T-bar suspended ceilings.

The emergency lights shall be four high-intensity LED with operational life of minimum 36,000 hours, until 70% of the initial light level (reported L70). The LEDs shall have redundant interconnections: eventual failure of one of them shall allow others to function. The unit shall have a two-wire universal input rated 120-347VAC, 50/60Hz and shall be equipped with a lithium battery. The charger circuit shall provide: AC lock-out, brownout transfer, and battery disconnect at the end of discharge. The charger shall be micro-controller-based and include self-test and diagnostic functions; the unit shall self-test for one minute every month, 30 minutes every six months and 90 minutes annually. The pilot light shall be a bi-color LED, installed behind the main optics and shall change color from normal green to flashing red when a failure is detected from the battery, charger circuit or lamps. A label located on the equipment housing shall describe the diagnostic for each flashing code. The unit shall be supplied with an infrared remote test control to start a manual test of one-minute duration or cancel it if needed.

The unit shall be cUL certified to CSA 22.2 No.141-15

The unit shall be **Ready-Lite®** model: _____.

PHOTOMETRY PERFORMANCE

The **RRAU Series** has a fixed lighting distribution, optimized by design for ceiling heights up to 12 ft. The **RRAU Series** delivers a stable and optimal illumination easy to specify. Along an office corridor the space coverage ranges from 68 to 80 feet. The square distribution pattern covers a surface of more than 700 square feet.

TABLE A: STANDARD UNIT 6-FT WIDE CORRIDOR¹

MOUNTING HEIGHT	SPACING CENTRE-TO-CENTRE
9 ft	68 ft
10 ft	80 ft
12 ft	72 ft

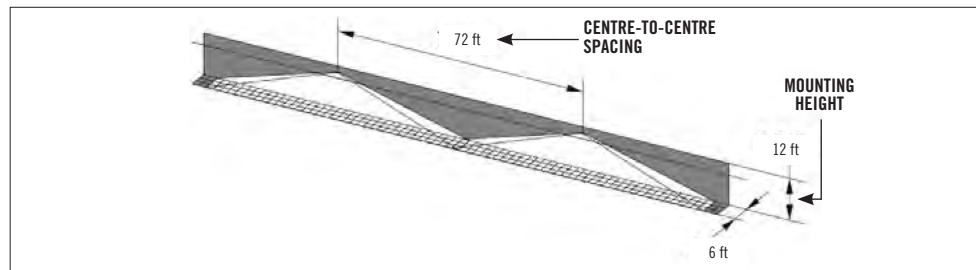
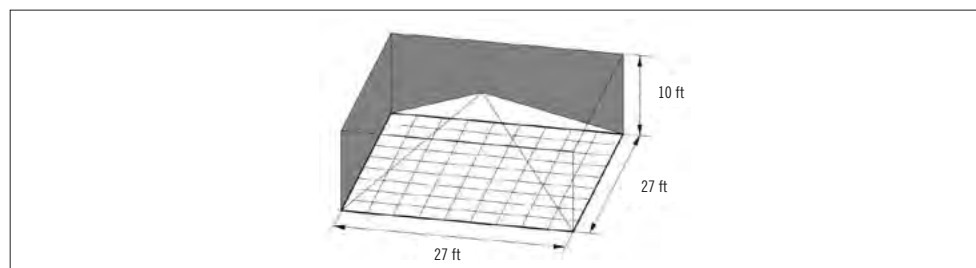


TABLE B: OPTION "SQUARE DISTRIBUTION PATTERN" – SINGLE UNIT COVERAGE¹

MOUNTING HEIGHT	ROOM SIZE	ROOM SURFACE
10 ft	27 ft x 27 ft	729 square feet



¹Typical reflectance levels of walls/ceiling/floor: 80/50/20

POWER CONSUMPTION AND UNIT RATING

AC	INPUT (VAC)	MAXIMUM			STAND-BY POWER (W)
		CURRENT (A)	POWER (W)	POWER FACTOR	
	120	0.03	2.8	0.6	0.5
	277	0.02		0.5	
	347	0.02		0.45	
POE	DC SUPPLY (V)	MAXIMUM			
		CURRENT (A)	POWER (W)		
	44-57	0.08	3		

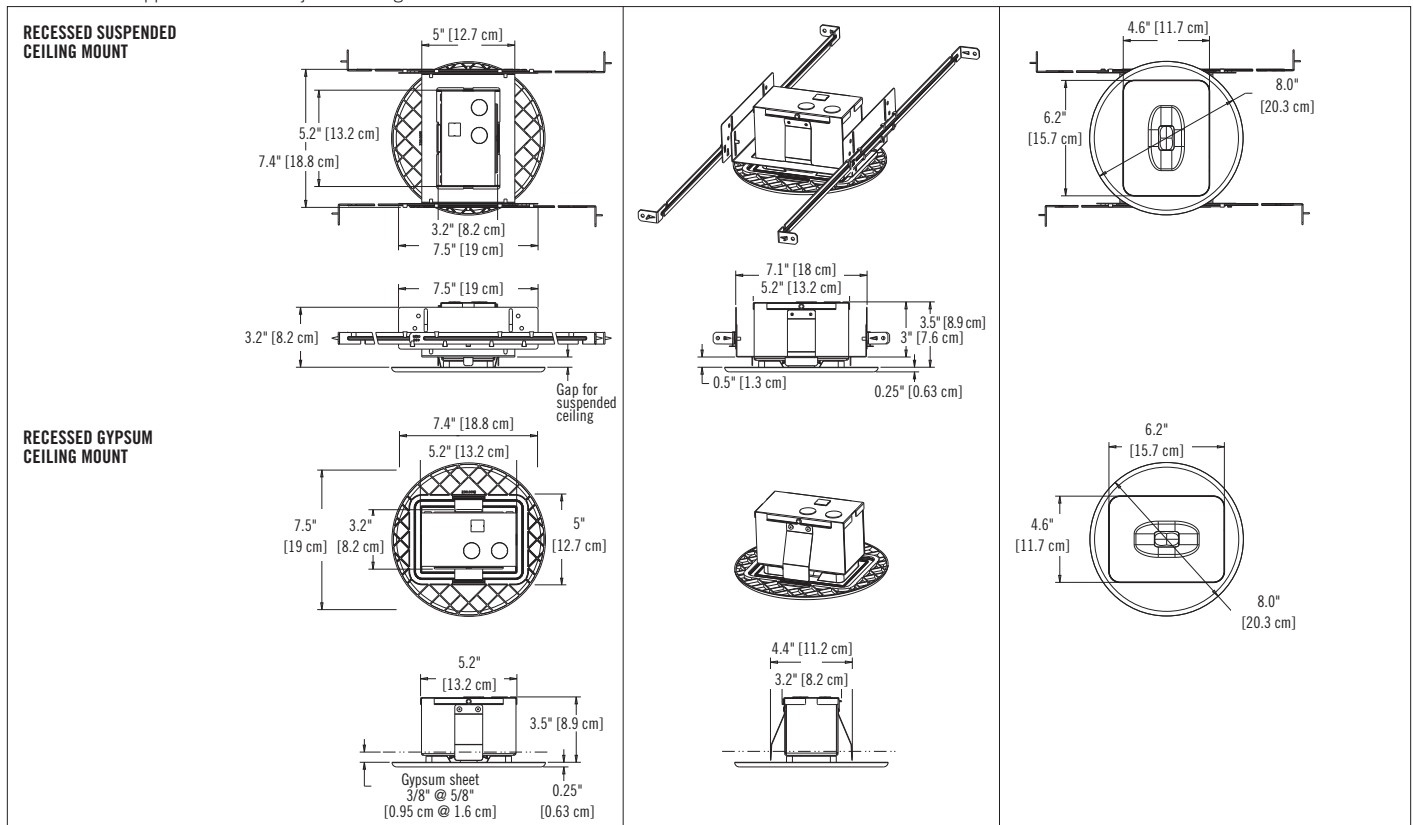


RRAU SERIES

Recessed architectural battery unit

DIMENSIONS

Dimensions are approximate and subject to change.



ORDERING INFORMATION

SERIES	COLOUR	UNIT TYPE	OPTIONS	VOLTAGE
RRAU= recessed architectural unit	BK = black WH = factory white	Blank = standard NEXP = Nexus®Pro wireless bluetooth UN = advanced diagnostics, non-audible	Blank = no options D3 = 15 minute time delay P = plenum/type IC rated SQ = square distribution pattern	Blank = 120 to 347VAC, 50/60Hz POE = power over ethernet

EXAMPLE: RRAUWHPOE