



LD Series

Die-Cast Pictogram Exit Sign



FEATURES

- Slim contoured body design
- Single & double face models supplied with two pictogram films, universal face models supplied with three pictogram films for directional selection
- Durable powder-coated Die-Cast construction in a variety of finishes
- Slim-line Die-Cast canopy for ceiling and end mounting
- Universal mounting, wall, end, or ceiling
- Dual voltage input: 120/277VAC 60Hz or 120/347VAC 60Hz
- Low power consumption: less than 3.5W
- Maintenance-free, long life sealed Nickel-Cadmium battery delivers minimum 120 minutes of back-up lighting
- Optional vandal-proof shield and tamper-proof screws
- Special wording available (CSA 22.2 No. 250.0)
- Meets or exceeds CSA 22.2 No. 141-15

See warranty details at: www.tnb.ca/en/brands/lumacell

TYPICAL SPECIFICATIONS

Stylish and built of Die-Cast aluminum, the new **Lumacell® LD Series** offers superior workmanship, versatile mounting capabilities and economical, long-lasting LED performance.

Supply and install the **LD Series** Pictogram Sign. The faceplate(s) and the back plate shall snap together and be made of Die-Cast aluminum. No screws are necessary to hold the faceplate(s) or the back plate to the housing. The light source shall be light emitting diodes (LED). The LED strip shall provide illumination in normal and emergency operation and shall be mounted inside the pictogram sign on a plastic frame/reflector.

The equipment in a Self-Powered configuration shall use a sealed Nickel-Cadmium battery of 2.4V nominal voltage. The equipment shall recharge the battery in 24 hours and stay illuminated at least 120 minutes upon AC failure. The equipment shall operate with a dual-voltage input of 120/277VAC 60Hz or 120/347VAC 60Hz with less than 3.5W of consumption.

When specified, the Self-Powered model equipped with advanced diagnostic shall self-test by simulating a power failure for one minute every 30 days, 30 minutes every 6 months and 120 minutes annually. A diagnostic circuit shall continuously monitor the performance of the battery, charger module and LED strip. Upon failure detection the system shall display the error on the AC pilot lamp, which will change color and will flash with a specific code.

The pictogram Exit Sign shall be CSA 22.2 No. 141-15 certified.

The Exit Sign shall be **Lumacell®** Model: _____.

WIRE GUARDS

460.0079-L	Wall Mount
460.0027-L	End Mount
460.0028-L	Ceiling Mount

POWER CONSUMPTION

MODEL	AC SPECS		DC SPECS	
AC only	120/277VAC or 120/347VAC	Less than 2.5W	–	–
AC/DC standard	120/277VAC or 120/347VAC	Less than 2.5W	6 to 48VDC	Less than 2W
Self-Powered	120/277VAC or 120/347VAC	Less than 3.5W	Ni-Cd battery	120 minutes
Self-Powered with diagnostic	120/277VAC or 120/347VAC	Less than 3.5W	Ni-Cd battery	120 minutes

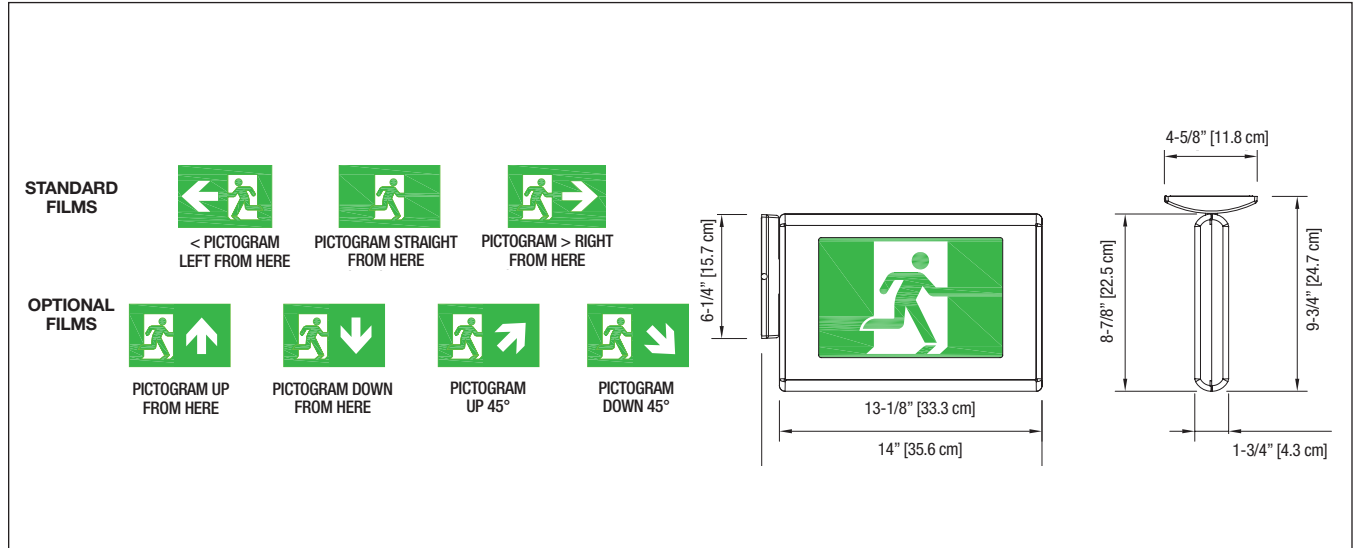
LD Series

Die-Cast Pictogram Exit Sign



DIMENSIONS

Dimensions are approximate and subject to change.



ORDERING INFORMATION

SERIES/ ENCLOSURE	FACES/ MOUNTING	ARROW CONFIGURATION	HOUSING/ FACEPLATE COLOUR	CIRCUIT TYPE	VOLTAGE	OPTIONS
LD= Die-Cast Pictogram	1= single face, universal mount 2= double face, universal mount 3= universal face, universal mount ¹	Blank= standard film ¹ SW= special wording U9= arrow up D9= arrow down U4= arrow up 45° D4= arrow down 45°	BB= black/black BA= black/brushed aluminum WA= factory white/ brushed aluminum WW= factory white/ factory white	AC= AC only NEXRF= Nexus® Wireless system interface S= Self-Powered SD= Self-Powered, diagnostic audible SDN= Self-Powered diagnostic non-audible UD= AC & 6 to 48VDC	2= 120/277VAC 3= 120/347VAC	TP= tamper-proof screws ¹ SW= special wording VR= vandal resistant shield and tamper-proof screws ¹
	¹ Only available with standard film. Not available with Nexus®	¹ See features for standard film details				¹ 990.0119-L= tamper-proof bit (sold separately) Only available with Single or Double Face.

EXAMPLE: LD1BBSN3