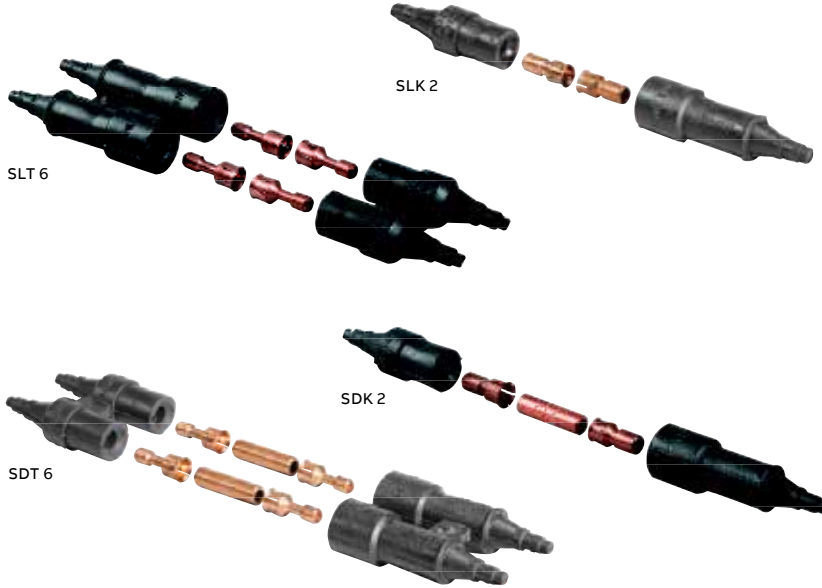


Breakaway street light kits

Flood-Seal® street and highway lighting compression fuse and non-fused kits – In-line



Everything you need for copper connections to roadway lighting.

Copper in-line fuse kits include Flood-Seal housing, fuse clips, silicone lubricant and instruction sheet. Fuse is not included. Fuse kits accept non-glass standard cartridge fuses of 1³/₃₂" diameter and 1½" length. Copper in-line non-fused kits include Flood-Seal housing, connecting link, silicone lubricant and instruction sheet.

- EPDM rubber housing ensures a fully insulated, watertight and submersible connection
- Breakaway design separates under tension so wires don't break
- Safe separations – fuse or connecting link stays in covered load side when separated
- Rated for 600 V, 30 A maximum – perfect for heavy-duty applications

Compression in-line fuse kits

Single housing Cat. no.	Twin housing Cat. no.	Cu wire size (AWG)			Installation tool
		Str.	Sol.		
SLK 6	SLT 6	#14-#10	#14-#8	ABB WT111M, C die or equal	
		#8-#6	#6-#4	ABB TBM20S, blue die or equal	
SLK 2	SLT 2	#4	#2	ABB TBM20S, gray die or equal	
		#2	-	ABB TBM20S, brown die or equal	

Single housing Cat. no.	Twin housing Cat. no.	Cu wire size (AWG)		Installation tool	Cu wire size (AWG)		Installation tool
		Str.	Sol.		Str.	Sol.	
SLK 6-2	SLT 6-2	#14-#10	#14-#8	ABB WT111M, C die or equal	#4	#2	ABB TBM20S, gray die or equal
		#8-#6	#6-#4	ABB TBM20S, blue die or equal	#2	-	ABB TBM20S, brown die or equal

Compression in-line non-fused kits

Single housing Cat. no.	Twin housing Cat. no.	Cu wire size (AWG)			Installation tool
		Str.	Sol.		
SDK 6	SDT 6	#14-#10	#14-#8	ABB WT111M, C die or equal	
		#8-#6	#6-#4	ABB TBM20S, blue die or equal	
SDK 2	SDT 2	#4	#2	ABB TBM20S, gray die or equal	
		#2	-	ABB TBM20S, brown die or equal	

Single housing Cat. no.	Twin housing Cat. no.	Cu wire size (AWG)		Installation tool	Cu wire size (AWG)		Installation tool
		Str.	Sol.		Str.	Sol.	
SDK 6-2	SDT 6-2	#14-#10	#14-#8	ABB WT111M, C die or equal	#4	#2	ABB TBM20S, gray die or equal
		#8-#6	#6-#4	ABB TBM20S, blue die or equal	#2	-	ABB TBM20S, brown die or equal

Note: For 60 A options, add "-60" suffix to the catalog number.
For larger wire sizes, please consult your ABB representative.

Breakaway street light kits

Flood-Seal® street and highway lighting mechanical fuse and disconnect kits – Y-type



Ideal for heavy-duty applications.

Aluminum and copper Y-type fuse kits include Flood-Seal housing, fuse clips, two aluminum lugs, hardware, silicone lubricant and instruction sheet. Fuse is not included. Aluminum and copper Y-type disconnect kits include Flood-Seal housing, fuse clips, connecting link, two aluminum or copper lugs, hardware, silicone lubricant and instruction sheet.

- EPDM rubber housing ensures a fully insulated, watertight and submersible connection
- Safe separations – fuse or connecting link stays in covered load side when separated
- Dual-rated and approved for a wide range of aluminum or copper conductors
- Rated for 600 V, 30 A maximum – perfect for heavy-duty applications
- Some fuse kits can even accept a 60 A fuse

600 Volt, 30 amp max., fused

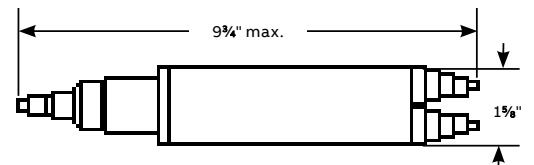
Cat. no.	Wire size stranded (AWG)	Fused/non-fused	Installing dies
FYA-6	#6	Fused (aluminum run, copper tap)	52, BG, 243, 5/8
FYA-4	#4		52, BG, 243, 5/8
FYA-2	#2		52, BG, 243, 5/8
FYA-1/0	1/0		52, BG, 243, 5/8
FYA-2/0	2/0		58, 297, 245, 5/8-1
FYC-8	#8	Fused (copper run, copper tap)	1/4, 6, TC, 21
FYC-6	#6		J, 7, TE, 24
FYC-4	#4		5/16, 8, TP, 29
FYC-2	#2		3/8, 10, TL-TN, 33
FYC-1	#1		3/8, 11K TB, 37
FYC-1/0	1/0		1/2, 12, TQ, 42
FYC-2/0	2/0		9/16, 13, TS, 45

Note: If fixture or tap wire is aluminum, add the following suffixes to the catalog number:
 -2A for 14–10 AWG stranded or 12–8 AWG solid. For example, FYC 1/0-2A.
 -3A for 8–6 AWG stranded or 6–4 AWG solid. For example, FYA 1/0-3A.

600 Volt, 30 amp max., non-fused

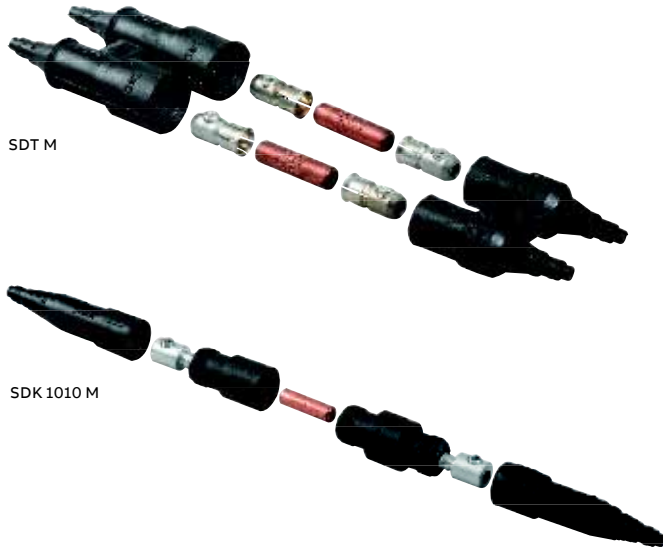
Cat. no.	Wire size stranded (AWG)	Fused/non-fused	Installing dies
DYA-6	#6	Non-fused (aluminum run, copper tap)	52, BG, 243, 5/8
DYA-4	#4		52, BG, 243, 5/8
DYA-2	#2		52, BG, 243, 5/8
DYA-1/0	1/0		52, BG, 243, 5/8
DYA-2/0	2/0		58, 297, 245, 5/8-1
DYC-8	#8	Non-fused (copper run, copper tap)	1/4, 6, TC, 21
DYC-6	#6		J, TE, 24
DYC-4	#4		5/16, 8, TP, 29
DYC-2	#2		3/8, 10, TL-TN, 33
DYC-1	#1		3/8, 11K TB, 37
DYC-1/0	1/0		1/2, 12, TQ, 42
DYC-2/0	2/0		9/16, 13, TS, 45

Diagram



Breakaway street light kits

Flood-Seal® street and highway lighting mechanical fuse and disconnect kits – In-line



In-line mechanical kit options for aluminum or copper conductors.

In-line fuse kits include Flood-Seal housing, fuse clips, silicone lubricant and instruction sheet. Fuse is not included. Fuse kits accept non-glass standard cartridge fuses of $1\frac{3}{32}$ " diameter and $1\frac{1}{2}$ " length. SLK 22-60 M, SLK 102-60 M and SLK 1010-60 M fuse kits can also accept a 60 A fuse measuring $2\frac{1}{4}$ " long. In-line non-fused kits include Flood-Seal housing, connecting link, silicone lubricant and instruction sheet.

- EPDM rubber housing ensures a fully insulated, watertight and submersible connection
- Safe separations – fuse or connecting link stays in covered load side when separated
- Dual-rated and approved for a wide range of aluminum or copper conductors
- Rated for 600 V, 30 A maximum – perfect for heavy-duty applications
- Some fuse kits can even accept a 60 A fuse

Flood-Seal street and highway lighting mechanical fuse and disconnect kits – In-line

Cat. no.	Fused/non-fused	Conductor range (Al/Cu) (AWG)	
		Stranded	Solid
In-line kits			
SLK M	Fused	#12, #10, #8, #6, #4	#12, #10, #8, #6, #4
SLT M [†]	Fused	#12, #10, #8, #6, #4	#12, #10, #8, #6, #4
SDK M	Non-fused	#12, #10, #8, #6, #4	#12, #10, #8, #6, #4
SDT M [†]	Non-fused	#12, #10, #8, #6, #4	#12, #10, #8, #6, #4
In-line variable-range kits			
SLK 22 M	Fused	#2–#14	#2–#14
SLK 102 M	Fused	1/0–#2	#2–#14
SLK 1010 M	Fused	1/0–#2	1/0–#2
SLK 22-60 M*	Fused	#2–#14	#2–#14
SLK 102-60 M*	Fused	1/0–#2	#2–#14
SLK 1010-60 M*	Fused	1/0–#2	1/0–#2
SDK 22 M	Non-fused	#2–#14	#2–#14
SDK 102 M	Non-fused	1/0–#2	#2–#14
SDK 1010 M	Non-fused	1/0–#2	1/0–#2

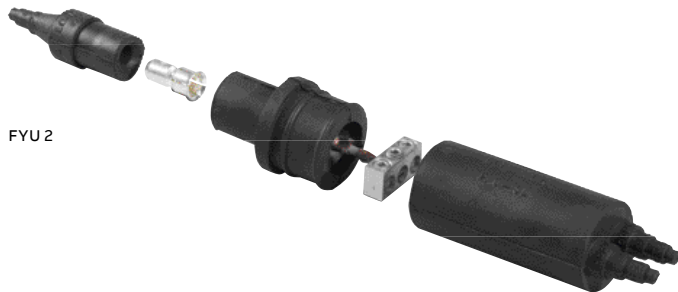
[†] Indicates twin housing.

* 60A fuse max. 60A fuses are $2\frac{1}{4}$ " long.

Note: 600V, 30A fuse not included. Fused kits accept standard cartridge fuse with $1\frac{3}{32}$ " diameter, $1\frac{1}{2}$ " length, non-glass type.

Breakaway street light kits

Flood-Seal® street and highway lighting mechanical fuse and disconnect kits – Y-type



Standard and mechanical run compression tap kits for your roadway lighting jobs.

Mechanical Y-type fuse kits include Flood-Seal housing, fuse clips, dowel and silicone lubricant. Fuse is not included. Fuse kits accept non-glass standard cartridge fuses of $\frac{13}{32}$ " diameter and 1½" length.

- EPDM Flood-Seal housing ensures a fully insulated, watertight and submersible connection
- Breakaway design separates under tension so wires don't break
- Safe separations – fuse or connecting link stays in covered load side when separated
- Matching ampacity rating – run or feeder lugs have the same ampacity rating as the cable, up to 2/0 AWG
- Rated for 600 V, 30 A maximum – perfect for heavy-duty applications
- Y-type mechanical run compression taps use a ½" hex wrench for easy installation

Flood-Seal street and highway lighting mechanical fuse and disconnect kits – Y-type

Cat. no.	Fused/non-fused	Conductor range (Al/Cu) (AWG)	
		Main	Tap
Y-type disconnect kits			
FYU M	Fused	#14-#2	#12-#4
DYU M	Non-fused	#14-#2	#12-#4
Y-line mechanical run compression kits			
FYU 6	Fused	#14-#2	#14-#6
FYU 2	Fused	#14-#2	#4-#2
DYU 6	Non-fused	#14-#2	#14-#6
DYU 2	Non-fused	#14-#2	#4-#2