

## Carlson nonmetallic conduits

### Schedule 40 PVC rigid nonmetallic conduits

#### Product specifications

Certified for underground applications encased in concrete or direct burial. Also for use in exposed or concealed above-ground applications.

- Sunlight resistant
- Rated for use with 75 °C conductors
- Superior weathering characteristics
- Meets CSA standard
- ¾ in. – 4 in. are FT-4 rated

#### Guy strain insulator

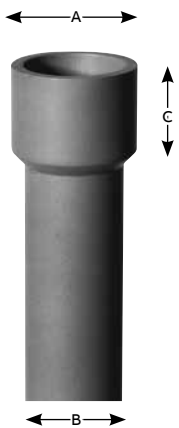


Cat. no.	Nom. size (in.)	Std. crate qty.		Std. bundle qty.		Wt. per		Dimensions (in.)	
		10 ft.	10 ft.	10 ft.	10 ft.	100 ft. (lb)	O.D.	I.D.	
<b>10 ft.</b>									
49009CC-010	1¼	3,300	50	46	1.660	1.380			
49010CC-010	1½	1,800	50	55	1.900	1.610			
49011CC-010	2	1,400	50	73	2.375	2.067			



#### Acceptable dimensions in inches of CSA listed integral bell

Nom. size (in.)	A at entrance (in.)		B at bottom (in.)		C socket depth (in.)	
	Maximum	Minimum	Maximum	Minimum	Maximum	Minimum
1¼	1.689	1.665	1.667	1.643	2.00	3.938
1½	1.930	1.906	1.906	1.882	2.00	1.062
2	2.405	2.381	2.381	2.357	2.00	1.125



For more information or for other sizes, contact your regional sales office

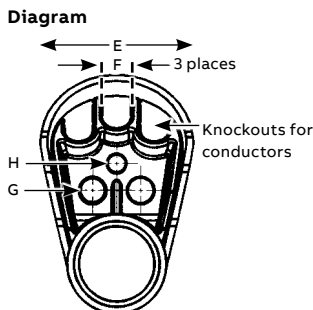
## Carlton nonmetallic conduits

### Schedule 40 PVC rigid nonmetallic conduits

#### Service entrance caps



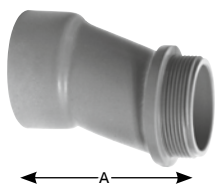
Cat. no.	Size (in.)	Std. ctn.	Dimensions (in.)			
			E	F	G	H
E998G	1¼	20	3.52	0.74	0.71	0.50
E998H	1½	10	3.52	0.74	0.71	0.50
E998J	2	5	4.26	0.83	0.78	0.56



#### Meter offset



Cat. no.	Size (in.)	Std. ctn.	Offset (in.)	A (in.)
				Max.
E995G	1¼	20	0.758	4.230

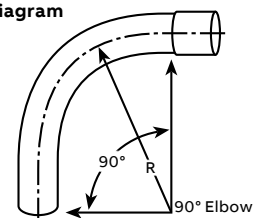


#### Schedule 40 elbows – Std. radius



Cat. no.	Size (in.)	Belled end std. ctn.
UA9AGCBUPC	1¼	20
UA9AHCBUPC	1½	25
UA9AJCBUPC	2	20

Diagram



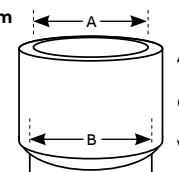
Available in plain and integral belled end for use with nonmetallic solvent weld fittings. Custom elbows available on request.

#### Integral belled end dimensions



Trade size (in.)	A at entrance (in.)		B at bottom (in.)		C socket depth (in.)	
	Max.	Min.	Max.	Min.	Max.	Min.
1¼	1.689	1.665	1.667	1.643	2.000	0.938
1½	1.930	1.906	1.906	1.882	2.000	1.062
2	2.405	2.381	2.381	2.357	2.000	1.125

Diagram

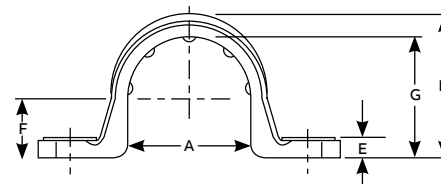
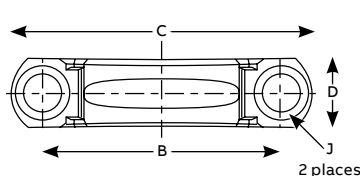


#### 2-Hole nonmetallic clamps



Cat. no.	Sizes in. (mm)	Std. ctn. (lb)	Dimensions in. (mm)								
			A	B	C	D	E	F	G	H	J
E977GC	1¼ (35)	50	1.714 (43.5)	2.68 (68.0)	3.28 (83.3)	0.64 (16.2)	0.15 (3.8)	0.83 (21.0)	1.687 (42.8)	1.89 (48.0)	0.320 (8.1)
E977HC	1½ (41)	50	1.920 (48.7)	2.82 (71.6)	3.44 (87.3)	0.70 (17.7)	0.15 (3.8)	0.97 (24.6)	1.930 (49.0)	2.12 (53.8)	0.312 (7.9)
E977JC	2 (53)	25	2.54 (64.5)	3.54 (89.9)	4.18 (106.1)	0.76 (19.3)	0.16 (4.0)	1.05 (26.6)	2.29 (58.1)	2.49 (63.2)	0.315 (8.0)
E977LCCAR	3 (78)	20	3.47 (88.2)	5.00 (127.0)	6.00 (152.4)	1.00 (25.4)	0.20 (5.08)	1.74 (44.3)	3.48 (88.4)	3.70 (94.0)	0.360 (9.14)

Diagrams



Nonmetallic clamps offer the same chemical resistance as Carlton nonmetallic conduits for a complete, corrosion resistant system. UV inhibited for use in direct sunlight. For more information or other sizes, contact your regional sales office

# Carlson nonmetallic conduits

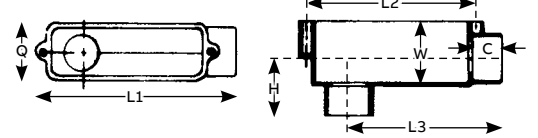
## Rigid nonmetallic conduits

### Conduit bodies – Type LB



Cat. no.	Size (in.)	Std. ctn.	C Typical (in.)	Max. L1 (in.)	Typical (in.)		Max. H (in.)	Max. Q (in.)	Max. W (in.)	Vol. (cu. in.)
					L2	L3				
E986G	1¼	10	1¾ <sub>32</sub>	7¾ <sub>32</sub>	6 <sup>13</sup> / <sub>32</sub>	6	2 <sup>5</sup> / <sub>16</sub>	2½	2¾	32.0
E986H	1½	10	1¾ <sub>32</sub>	7¾ <sub>32</sub>	6 <sup>13</sup> / <sub>32</sub>	6	2 <sup>5</sup> / <sub>16</sub>	2½	2¾	32.0
E986J	2	10	1¾ <sub>32</sub>	9¾ <sub>32</sub>	6 <sup>13</sup> / <sub>32</sub>	7¼	2 <sup>5</sup> / <sub>16</sub>	3 <sup>5</sup> / <sub>32</sub>	3 <sup>15</sup> / <sub>32</sub>	63.0

Diagrams

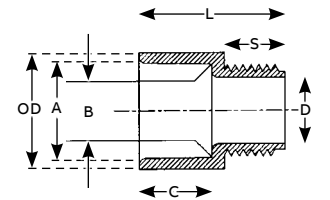


### Male terminal adapters



Cat. no.	Size (in.)	Std. ctn.	Typical (in.)		Min. D (in.)	Max. OD (in.)	C	S	Typical (in.)	
			A	B					L	L
E943G	1¼	50	1.677	1.655	1.345	1.973	1.208	0.816	1.986	1.986
E943H	1½	25	1.918	1.894	1.574	2.188	1.155	0.802	2.105	2.105
E943J	2	50	2.393	2.369	1.998	2.713	1.145	0.825	2.093	2.093
E943L	3	45	3.515	3.492	2.989	3.965	1.643	0.797	2.660	2.660

Diagram



For adapting nonmetallic conduits to boxes, threaded fittings, metallic systems. Male threads on one end, socket end on other.

### Iberville® steel locknuts



Cat. no.	Trade size (in.)
CI1710	1¼
CI1712	1½
CI1716	2
CI1724	3

### PVC conduit to DB/2 duct adapter



Cat. no.	Size (in.)	Std. ctn.
CE942RL	3	1

### Expansion fitting



Cat. no.	Size (in.)	Std. ctn.	Travel length (in.)
E945L	3	10	8