

New

CO22-U Series

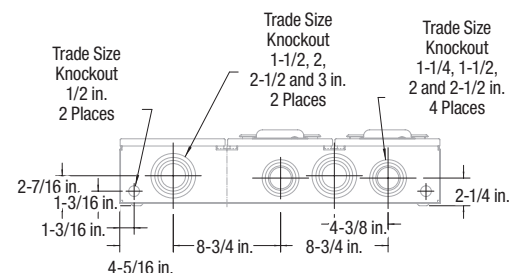
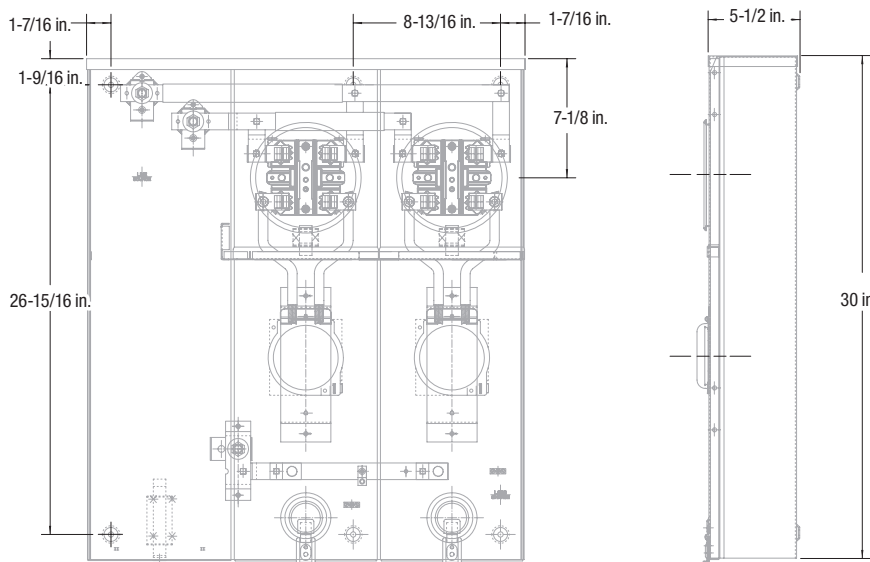
200 A (Main Lugs), 200 A per Position, Single Phase 120/240 V; Multiple Position Combination with Compartment with or without Breaker

Product Specifications

- Conductor range: Line: Single 1/2 in. stud to accommodate compression lugs (supplied by utility), Load: 6 AWG-250 kcmil
- Aluminum tunnel type connectors for load sides
- For underground service only
- Factory pre-bussed from main lugs to each position
- Internal locking system for covers
- Supplied with screw type sealing rings
- Factory installed 2 pole circuit breaker, 10,000 A rms interrupting capacity
- Siemens Type "QJ" breaker
- With adjustable breaker plate for field installation of Square D-Type QBL and Eaton-Type ED breakers
- C03009-KIT (Siemens), C03009SD-KIT (Square D) and C03409FB-KIT (Eaton) conductor kits available (breakers not included) see page D52
- Weatherproof Type 3R enclosure
- **Primarily used: All Provinces**
- **Quebec only: As per Hydro-Québec spec (supplied with 22 kA Siemens breaker)**



Note: Consult your Regional Sales Office for right-hand entry option.



Approved for copper or aluminum

Cat. No.	Type	Description	Position	Dimensions (in.)			Weight Each	
				H	W	D	lb.	kg
Left-Hand Entry								
CO22-U	Underground only	2 gang with blank compartment, provision for Siemens 2 x (QJ), 200 A 2 pole 10 kA rated circuit breakers	2	26-1/4	35	5-1/2	60	27.21
CO22-200-U		2 gang with blank compartment, c/w Siemens 2 x QJ 200 A 2 pole 10 kA rated circuit breakers						
CO22-200HI-U		2 gang with blank compartment, c/w Siemens 2 x QJH 200 A 2 pole 22 kA rated circuit breakers						
CO23-U		3 gang with blank compartment, provision for Siemens 3 x (QJ), 200 A 2 pole 10 kA rated circuit breakers	3	30	35	5-1/2	80	36.29
CO23-200-U		3 gang with blank compartment, c/w Siemens 3 x QJ 200 A 2 pole 10 kA rated circuit breakers						
CO23-200HI-U		3 gang with blank compartment, c/w Siemens 3 x QJH 200 A 2 pole 22 kA rated circuit breakers						
CO24-U		4 gang with blank compartment, provision for Siemens 4 x (QJ), 200 A 2 pole 10 kA rated circuit breakers	4	43-3/4	35	5-1/2	100	45.36
CO24-200-U		4 gang with blank compartment, c/w Siemens 4 x QJ 200 A 2 pole 10 kA rated circuit breakers						
CO24-200HI-U	4 gang with blank compartment, c/w Siemens 4 x QJH 200 A 2 pole 22 kA rated circuit breakers							

Note: Ex. CO22-XXX, suffix (XXX) can be replaced by any of the following breaker amperage options: 100, 125 or 150. Consult your Regional Sales Office for price and availability.