



Microelectric[®] Meter Sockets

Smart solutions
that save you
time and money



5 reasons

why Microelectric® is the only brand you need in meter sockets

1

Save time and money with problem-free installation.

Robust and installer-friendly, Microelectric® products will help you finish jobs easier, faster, and hassle-free.

2

Enjoy peace of mind with superior products designed for and made in Canada.

We understand the physical and regulatory conditions you work under. Customizing our products for each province, we are one of the few suppliers designing and manufacturing meter sockets in Canada.

3

Find what you need fast.

We're always in-stock. From coast-to-coast, you can quickly find Microelectric® products at all major electrical national distributors. That's unique!

4

Take advantage of quick turnaround

on your orders and inquiries. With more sales professionals and experts in more places across Canada than any other competitor, we provide quick, experienced support, no matter what your question.

5

Talk to a manufacturer that listens.

Because we're always talking with customers like you about how we can make your work life more productive, we're continuously innovating in our product design and manufacturing processes.



We work sustainably

by reducing waste and consumption in all our processes.



Thomas & Betts

A Member of the ABB Group



07 28515306 HPP
FCC ID: SK9C1A-3 IC: 8640-C1A3

8577
kWh

0 5 000A 240V 1PH TYPE C1SR 3FELS Wire FW 2.72

FM 2S
60 Hz
Kh 1.0

0276087*
01 929
121091



New and improved
time-saving sealing ring
with 3-point seal

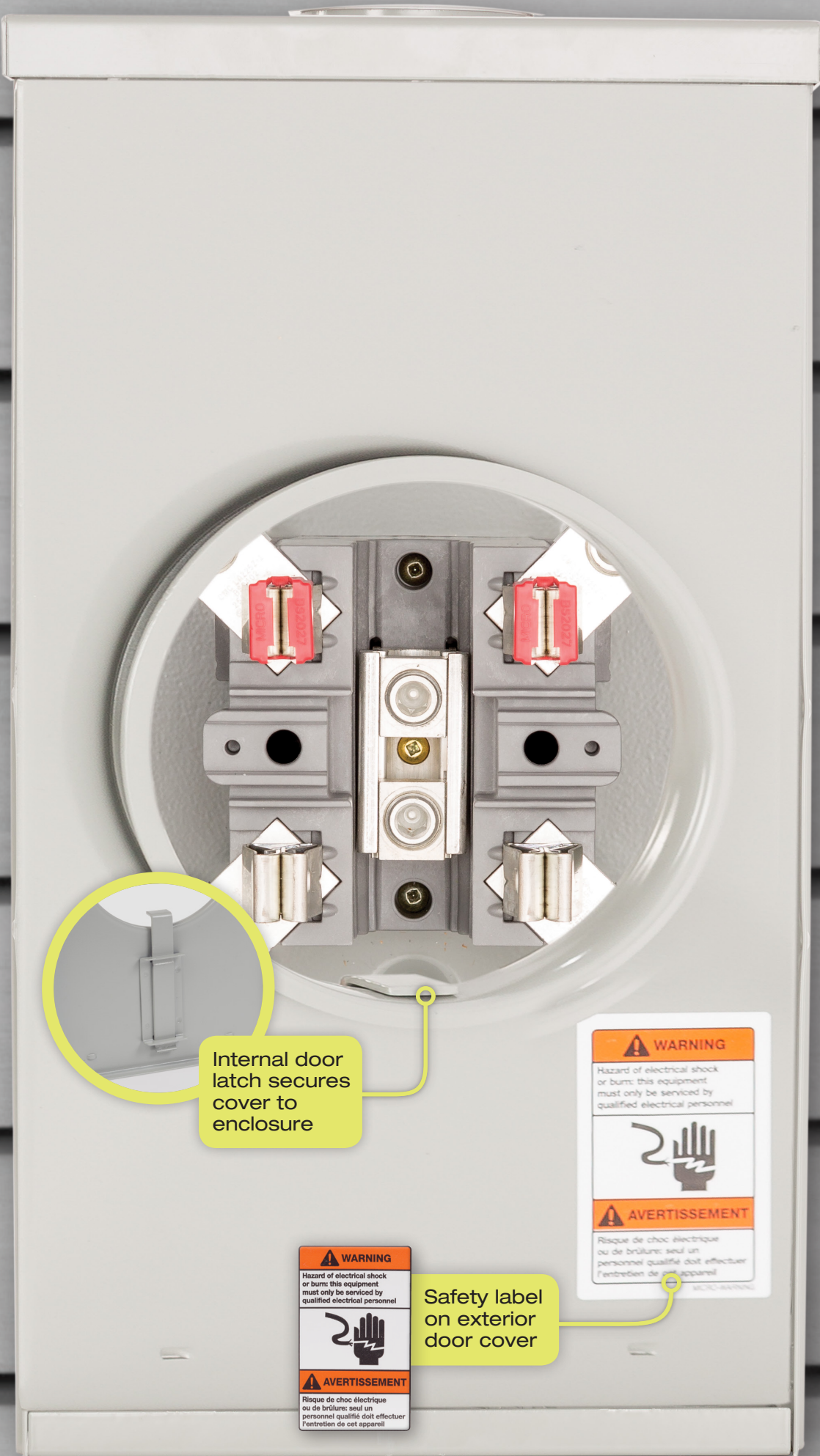
WARNING

Hazard of electrical shock or burn: this equipment must only be serviced by qualified electrical personnel

AVERTISSEMENT

Risque de choc électrique ou de brûlure: seul un personnel qualifié doit effectuer l'entretien de cet appareil

W100-WARNING



Internal door latch secures cover to enclosure



Safety label on exterior door cover





The solutions you need The quality you trust!

Easily removable knockouts
allow fast installation.
Accept conduit from 1/4" to 2 1/2"



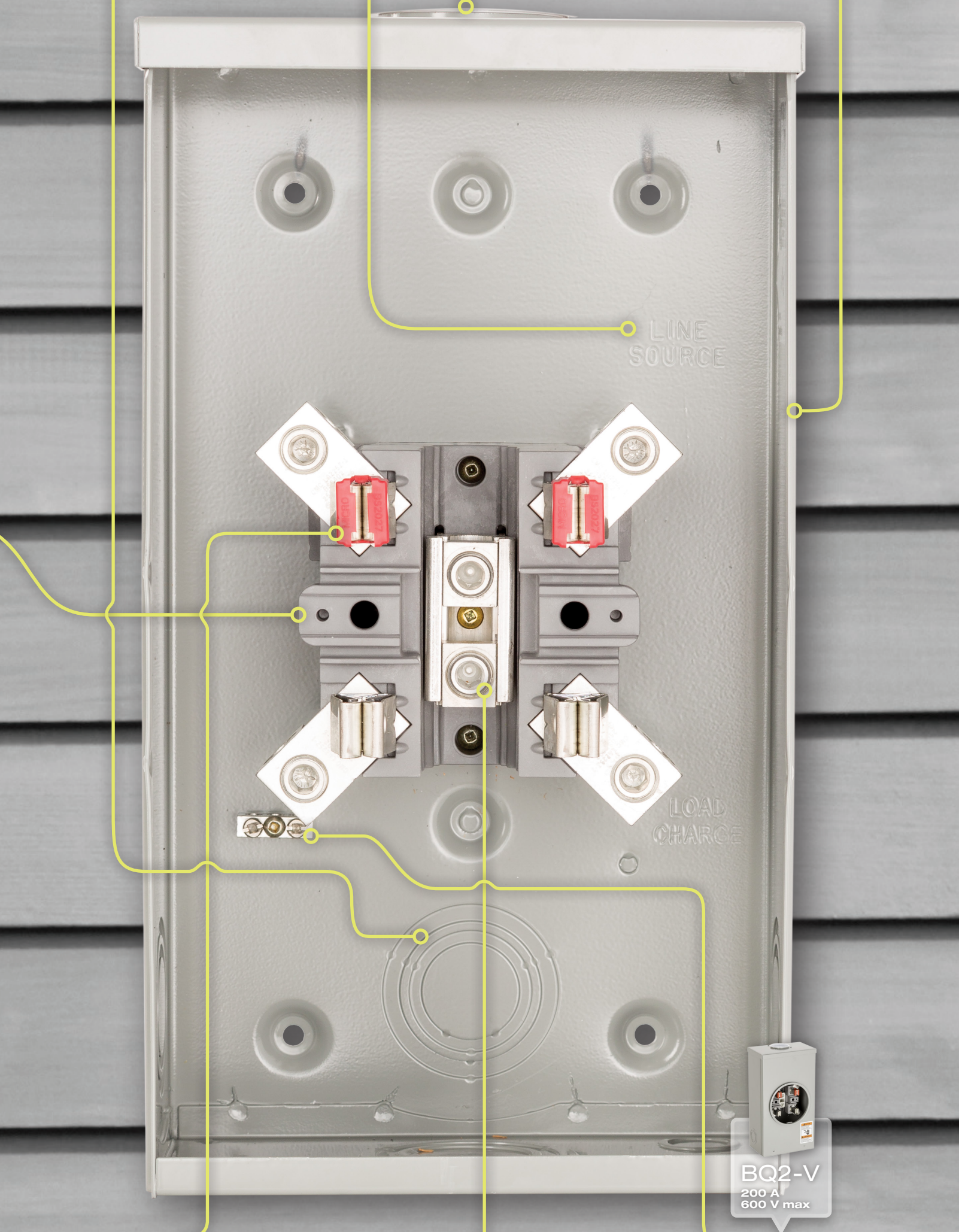
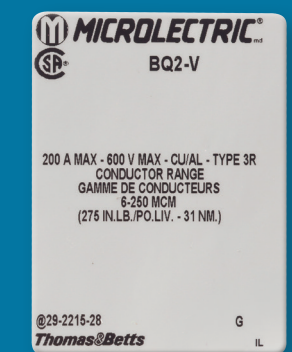
Embossed identification
of line and load



Hub opening for overhead application
standard 1" to 2 1/2" opening



Grey label
on every enclosure shows product and wiring information



Save time and money

Hassle-free installations
No field breakage or customer call-backs.

Exclusive uniblock design

Robust uniblock construction provides increased resistance

- Installation torque and cable pull stress (line/load side 375 lb./in.)
- Temperature variations from -40°C to 90°C
- Chemical corrosion from substances such as wire lubricants



Aluminium connectors encased in uniblock

Deliver additional support from over-torquing

- Conductor range 6 AWG to 250 kcmil (copper and aluminum)
- Angled connector position allows for optimization of enclosure size
- Tin-plated aluminum
- Standard screw head design

Tough in Canadian environments

- NEMA type 3R enclosure protects against falling rain, sleet, snow, and dirt. Resists damage by ice-formation
- Strong, galvanized 17-gauge steel construction meets ASTM 7091 and allows superior welding and paint adhesion
- Durable, high-gloss powder paint finishes meet ASTM B523 and are highly corrosion-resistant and weatherproof
- All Microlectric® enclosures pass a 600-hour salt spray test, complying with ASTM B117 standard and CSA C22.2 No. 115N



Flexibility that reduces inventory costs

Durability you can count on

Overhead and underground application in one meter socket



Microlectric® BS2-TCV Meter socket
200 A 600 V max
120/240 V single phase, 3 wires



Microlectric® BE1-TCV Meter socket
100 A 600 V max
120/240 V single phase, 3 wires
UNDERGROUND-ONLY APPLICATIONS

Larger enclosure size provides additional workspace when bending and installing larger conductors

- Robust uniblock design
- Connectors accept conductor range 6 AWG to 250 kcmil

Block and bridge design with neutral installed on bridge

- Connectors accept conductor range 6 to 1/0 AWG



Both BE1-TCV and BS2-TCV allow for installation of an insulated neutral both field or factory-installed.

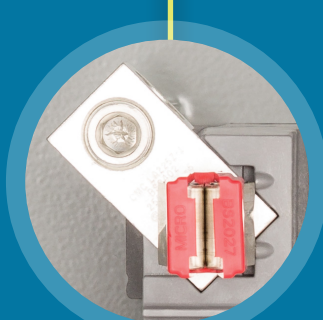


Microlectric® MO2V Meter socket
200 A 600 V max
120/240 V single phase, 3 wires
UNDERGROUND-ONLY APPLICATIONS

Highest torque resistance of any connector

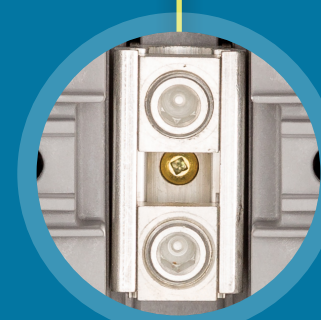
- Zinc and clear chromate plated 1/2" stud connectors located on line side and neutral position. Also referred to as 'Bell nut'
- Single 1/2" studs to accommodate compression lugs 350 kcmil max.
- High torque resistance, passes 700lbs torque test
- Supplied with aluminum tunnel-type connector on load side. Accepts 6 AWG - 250 kcmil
- Robust uniblock design

Promotes safe installations for you and the local utility authority



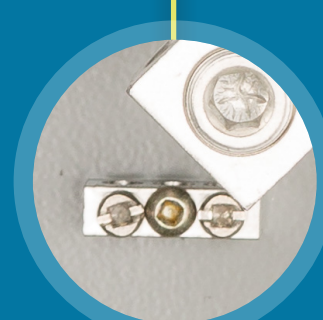
Meter jaws tinplated copper with spring

- Ensures a good connection between jaws and blades of utility meter
- Line side jaws identified with red shroud for safety
- Standard product comes with a 4-jaw configuration
- 5th jaw assembly can be field- or factory-installed



Neutral aluminum connector is visible and easy to access

- Having the neutral conductor bonded to the meter socket is critical in case of a short circuit in the meter socket



Aluminum bond lug comes in handy

- because some local supply and inspection authorities require a copper bonding conductor to run with the service conductors from the load centre to the meter socket
- Accepts, 2-wire 4-14 AWG



Save time and money

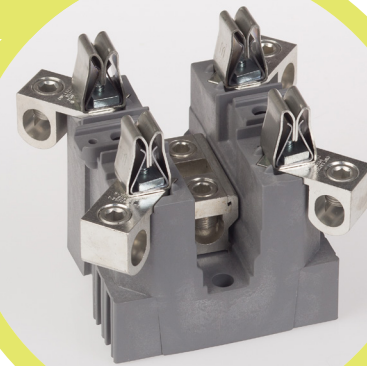
Hassle-free installations

No field breakage or customer call-backs.

Exclusive uniblock design

Robust uniblock construction provides increased resistance

- Installation torque and cable pull stress (line/load side 375 lb./in.)
- Temperature variations from -40°C to 90°C
- Chemical corrosion from substances such as wire lubricants



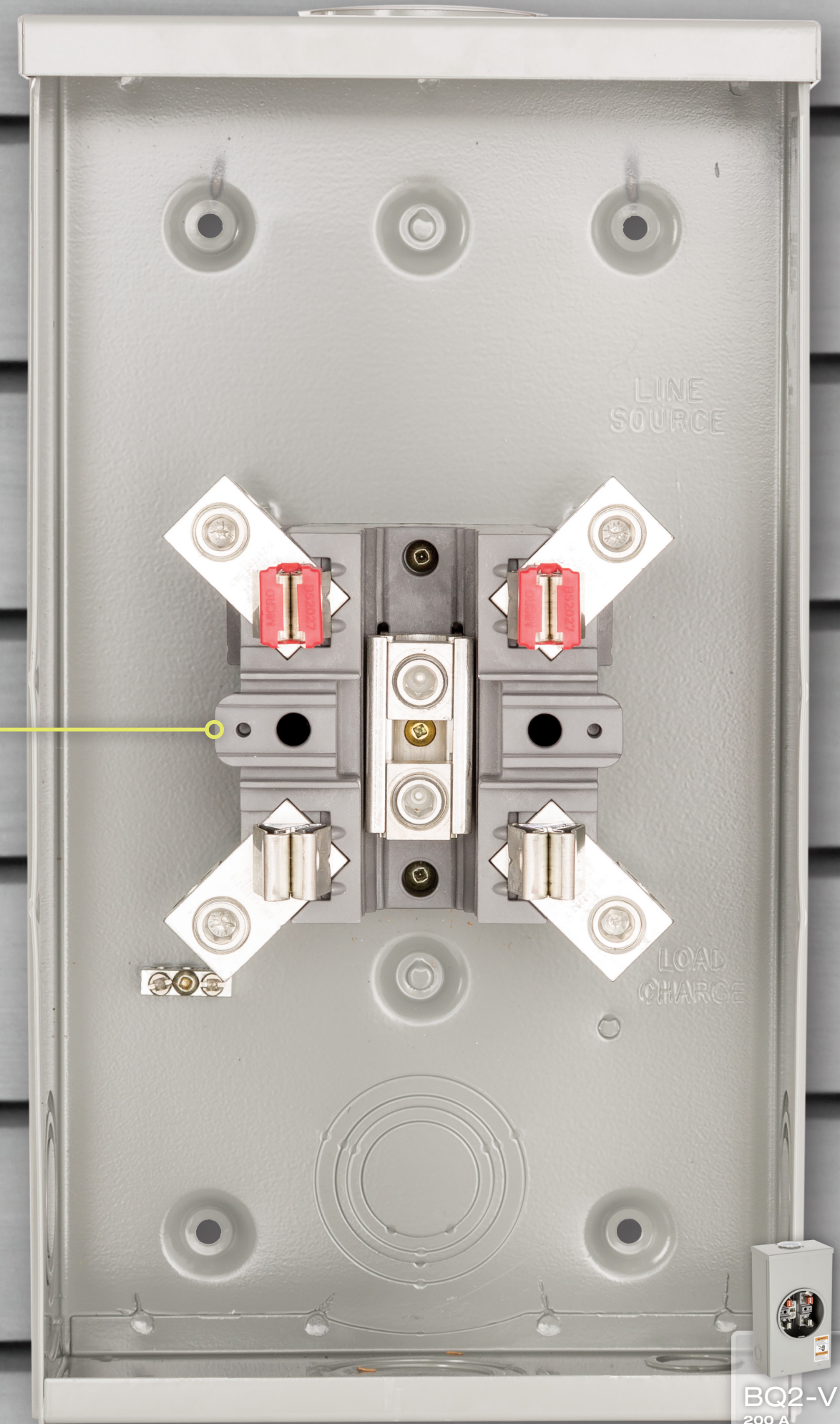
Aluminium connectors encased in uniblock

Deliver additional support from over-torquing

- Conductor range 6 AWG to 250 kcmil (copper and aluminum)
- Angled connector position allows for optimization of enclosure size
 - Tin-plated aluminum
 - Standard screw head design

Tough in Canadian environments

- NEMA type 3R enclosure protects against falling rain, sleet, snow, and dirt. Resists damage by ice-formation
- Strong, galvanized 17-gauge steel construction meets ASTM 7091 and allows superior welding and paint adhesion
- Durable, high-gloss powder paint finishes meet ASTM B523 and are highly corrosion-resistant and weatherproof
- All Microelectric® enclosures pass a 600-hour salt spray test, complying with ASTM B117 standard and CSA C22.2 No. 115N



BQ2-V
200 A
600 V max



The solutions you need

The quality you trust!

Easily removable knockouts

allow fast installation. Accept conduit from 1/4" to 2 1/2"



Embossed identification of line and load

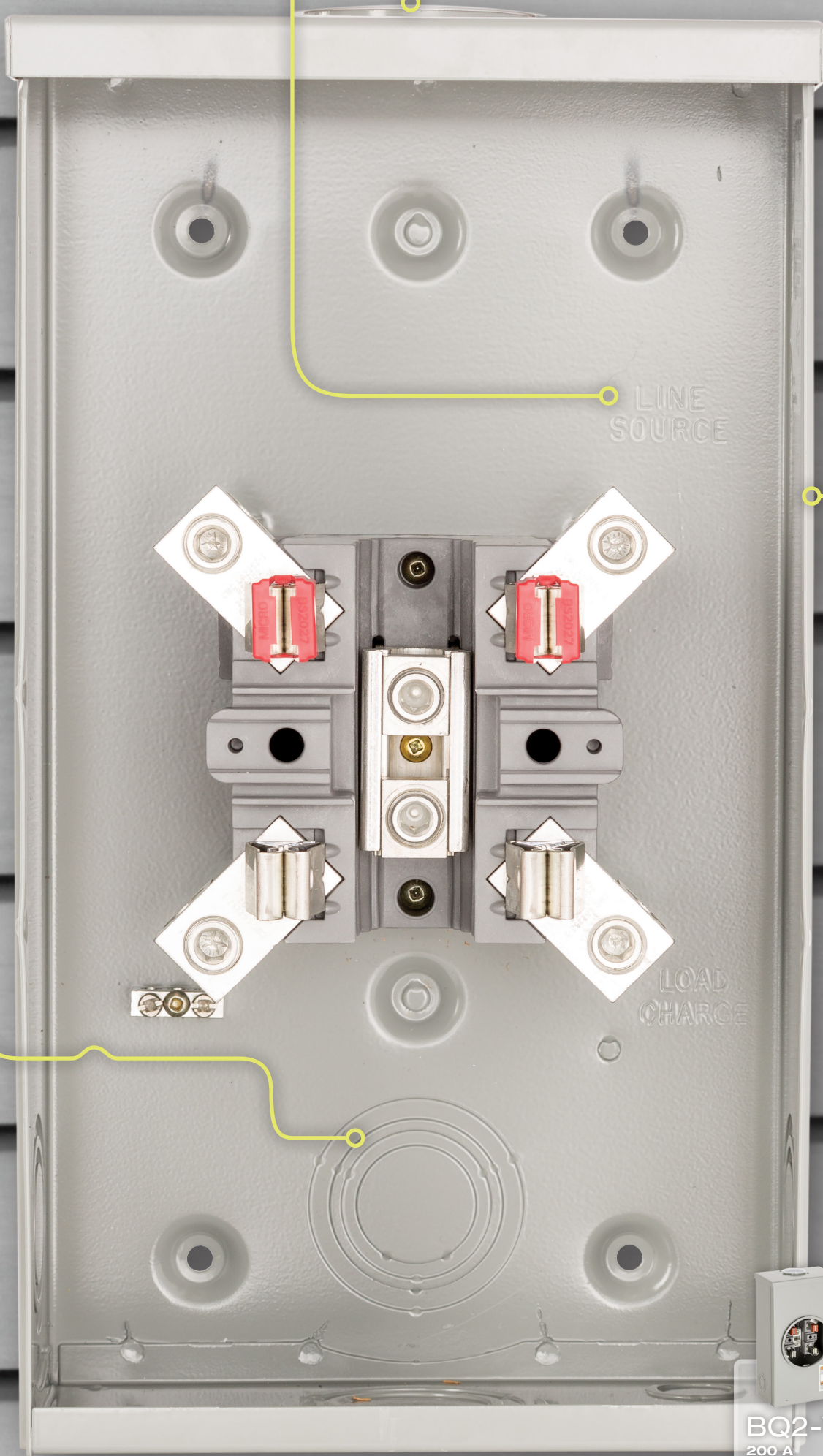
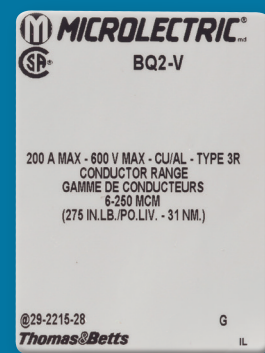


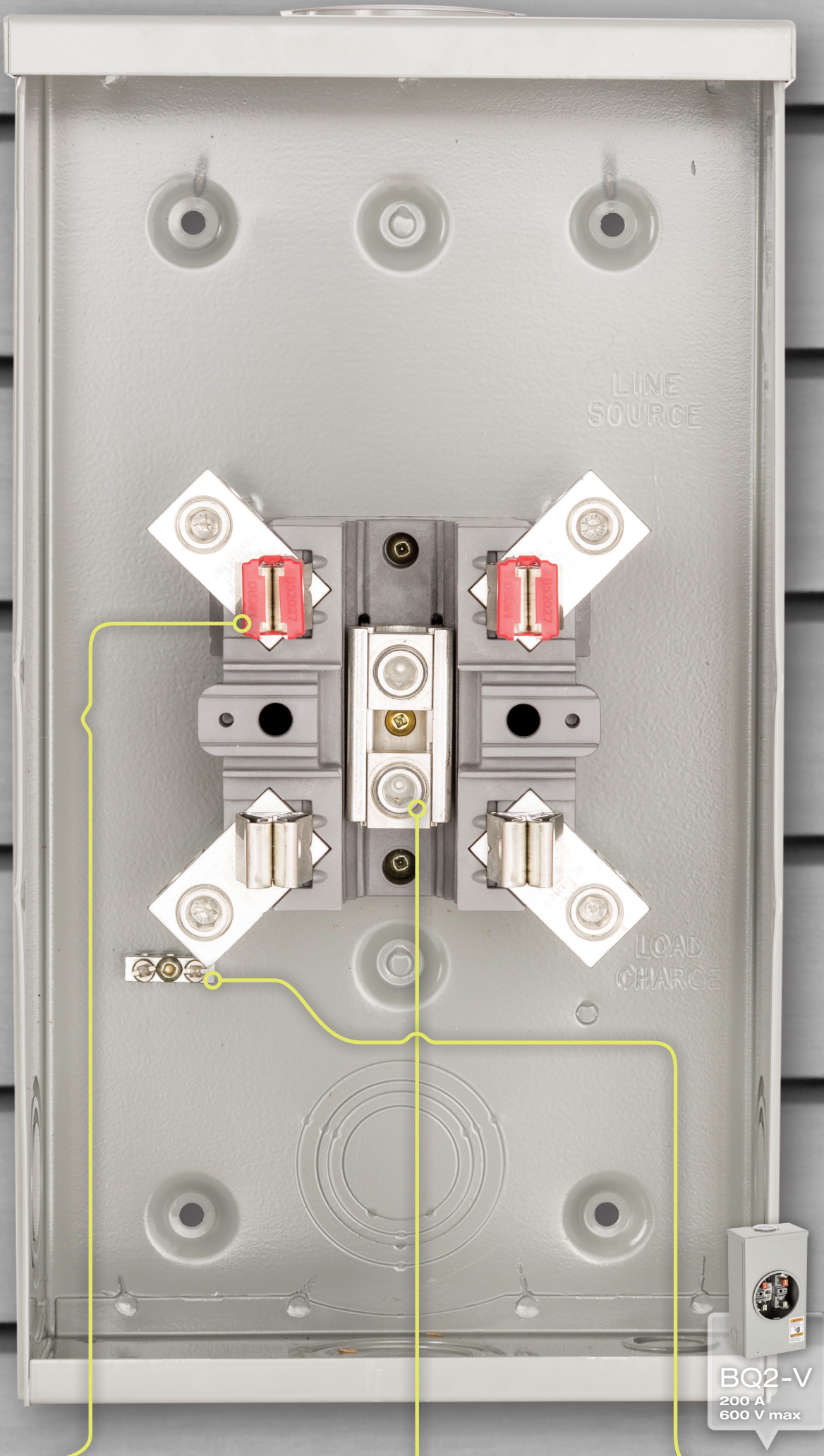
Hub opening for overhead application

standard 1" to 2 1/2" opening

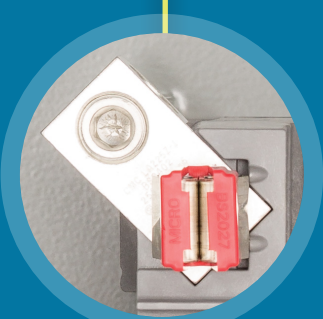


Grey label on every enclosure shows product and wiring information



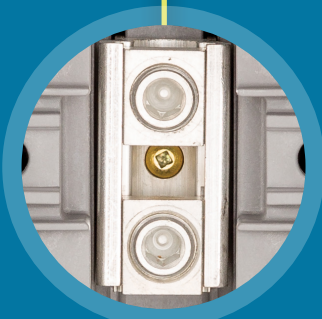


Promotes safe installations for you and the local utility authority



Meter jaws tin-plated copper with spring

- Ensures a good connection between jaws and blades of utility meter
- Line side jaws identified with red shroud for safety
- Standard product comes with a 4-jaw configuration
- 5th jaw assembly can be field- or factory-installed



Neutral aluminum connector is visible and easy to access

- Having the neutral conductor bonded to the meter socket is critical in case of a short circuit in the meter socket



Aluminum bond lug comes in handy

- because some local supply and inspection authorities require a copper bonding conductor to run with the service conductors from the load centre to the meter socket
- Accepts 2-wire 4-14 AWG

Flexibility that reduces inventory costs

Durability you can count on

Overhead and underground applications in one meter socket



Microelectric®
BS2-TCV Meter socket

200 A 600 V max.
120/240 V single phase, 3 wires



Microelectric®
BE1-TCV Meter socket

100 A 600 V max.
120/240 V single phase, 3 wires



Microelectric®
MO2V Meter socket

200 A 600 V max.
120/240 V single phase, 3 wires

UNDERGROUND-ONLY APPLICATIONS

Larger enclosure size provides additional workspace when bending and installing larger conductors

Block and bridge design with neutral installed on bridge

- Robust uniblock design
- Connectors accept conductor range 6 AWG to 250 kcmil

- Connectors accept conductor range 6 to 1/0 AWG

Highest torque resistance of any connector

- Zinc and clear chromate plated 1/2" stud connectors located on line side and neutral position.

Also referred to as 'Bell nut'

- Single 1/2" studs to accommodate compression lugs 350 kcmil max.
- High torque resistance, passes 700 lb. torque test

- Supplied with aluminum tunnel-type connector on load side. Accepts 6 AWG – 250 kcmil

- Robust uniblock design



Both BE1-TCV and BS2-TCV allow for installation of an insulated neutral both field or factory-installed.

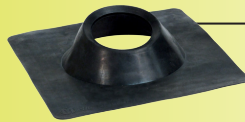
Connect with Thomas & Betts

Why we're your best connection for meter socket solutions

In addition to our meter sockets, Microelectric® offers a full range of masts and accessories to meet all your requirements.

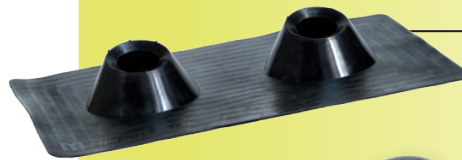
New accessories

→ A complete list of all our products is available on our website and in our catalogue.



Simple all neoprene roof flange,
400 A, for 4 in. masts

MM806N



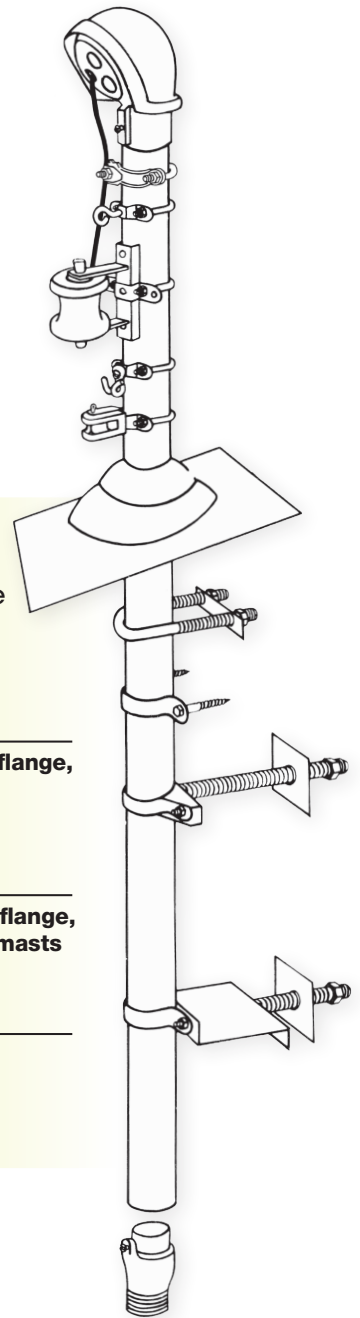
Double all neoprene roof flange,
for two parallel 2-1/2 in. masts

MM507DN



2-1/2 in. one-piece
mast coupler

MC250



Atlantic Provinces

Thomas & Betts Limited
Tel.: (902) 450-1307
Toll Free: 1-877-862-4357
Fax: (902) 450-1309

Quebec

Thomas & Betts Limited
Tel.: (450) 466-1102
Toll Free: 1-800-465-1399
Fax: (450) 466-1163

Ontario

Thomas & Betts Limited
Tel.: (905) 635-7888
Toll Free: 1-877-291-7771
Fax: (905) 635-7889

Manitoba/Saskatchewan

Thomas & Betts Limited
Tel.: (604) 598-9811
Toll Free: 1-866-540-8220
Fax: (604) 598-9840

Alberta

Thomas & Betts Limited
Tel.: (780) 424-7092
Toll Free: 1-888-664-5666
Fax: (780) 424-7093
Toll Free: 1-866-424-4082

British Columbia

Thomas & Betts Limited
Tel.: (604) 598-9811
Toll Free: 1-866-540-8220
Fax: (604) 598-9840

www.tnb.ca

Thomas & Betts

A Member of the ABB Group

