



Insulated Concrete Form construction has a new ally.

Introducing
the Iberville® LMS™ Box
designed specifically
for ICF construction.

Now all of the benefits of Iberville® steel boxes are available in a family of boxes designed specifically for Insulated Concrete Form (ICF) construction.

- Heavy-duty steel construction for maximum strength and durability
- Installation after the concrete pour in any location, even next to supports
- Fast and easy installation using standard electrical wiring
- 1-, 2-, 3- and 4-gang models AND an octagonal box
- One device box model (1- to 4-gang) can be used for both nonmetallic sheathed and armoured cable
- CSA Certified
- Designed and manufactured in Canada



Strong, durable steel construction

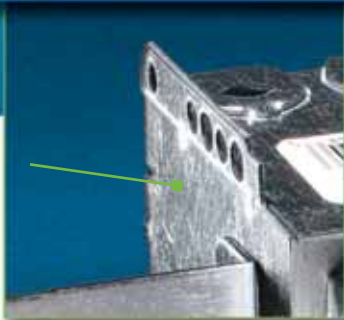
Installs after the concrete pour, anywhere

One device box — nonmetallic sheathed
and armoured cable



Thomas & Betts. Your best connection for innovative solutions.

Solid construction, simple installation

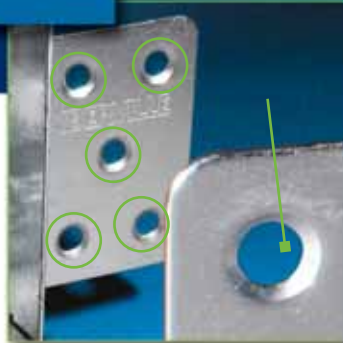


Flat sides simplify installation, even next to wall supports.

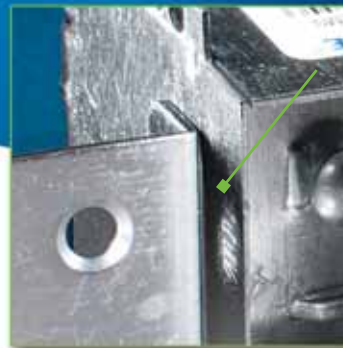
NO ADDITIONAL PARTS TO ENGAGE OR REMOVE.



Extended sides and wide mounting flanges for maximum stability.



Choice of five screw positions. Countersunk holes prevent screw heads from damaging drywall.



1/2-inch drywall setback for a clean, professional finish.

Iberville® LMS™ Box Family

**UP TO
4-GANG
and an
OCTAGONAL
BOX!**



Device boxes can be used with both nonmetallic sheathed and armoured cable.

Iberville® LMS™ Box Family



CATALOGUE NUMBER	DESCRIPTION	CAPACITY (cu. in.)
BC2104-LMS	1-gang	12.5
BC2104-LMS-2	2-gang	25.0
BC2104-LMS-3	3-gang	37.5
BC2104-LMS-4	4-gang	50.0
BC54151-LMS	Octagonal	15.0

Atlantic Provinces

Thomas & Betts Limited
Tel.: (902) 450-1307
Toll Free: 1-877-862-4357
Fax: (902) 450-1309

Quebec

Thomas & Betts Limited
Tel.: (450) 466-1102
Toll Free: 1-800-465-1399
Fax: (450) 466-1163

Ontario

Thomas & Betts Limited
Tel.: (905) 858-1010
Toll Free: 1-877-291-7771
Fax: (905) 858-1080

Manitoba/Saskatchewan

Thomas & Betts Limited
Tel.: (604) 598-9811
Toll Free: 1-866-540-8220
Fax: (604) 598-9840

Alberta

Thomas & Betts Limited
Tel.: (780) 424-7092
Toll Free: 1-888-664-5666
Fax: (780) 424-7093
Toll Free: 1-866-424-4082

British Columbia

Thomas & Betts Limited
Tel.: (604) 598-9811
Toll Free: 1-866-540-8220
Fax: (604) 598-9840