

Improve your productivity with our ergonomic battery-powered crimping tool.



150,000 cycle lifespan

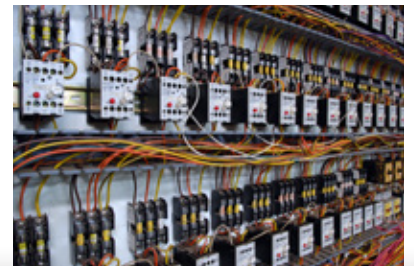
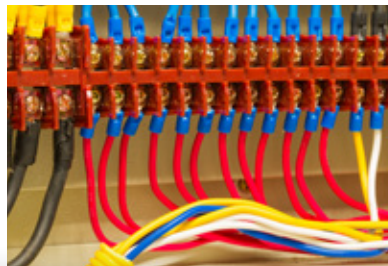
Extremely light and efficient

Crimps both Sta-Kon® and
Dragon Tooth™ terminals

The Sta-Kon® **BAT22-6NV2** is motorized and automatic for effortless, single-lever crimping.

This is an excellent tool for various vertical markets including panel builders, system integrators, data centers, utilities and various other OEMs and MROs.

- Comes complete with extra battery, charger and carrying case
- Powerful lithium-ion battery with charge-level indicator
- Single-lever motorized operation for easy manual preclamping, automatic crimping and auto-retract functions
- Motor-stall protection in case of faulty operation
- LED work light illuminates work areas



Thomas & Betts. Your best connection for innovative solutions.

Essential tool for a successful crimping process

Get power in reserve.

When it comes to automatic crimping, the new BAT22-6NV2* gives you the complete package.

* Dies sold separately.

Select the proper dies for the intended crimp.

| DIE SETS | DESCRIPTION |
|-----------|--|
| DIE2001 | Sta-Kon® insulated 22-10 AWG terminals |
| DIE2002 | Sta-Kon® non-insulated 22-10 AWG terminals |
| DIE2005 | Sta-Kon® non-insulated 16-14, 12-10, 8-6 AWG tubular terminals |
| DIE2007 | Sta-Kon® insulated 8-6 AWG tubular terminals |
| DIE2009 | Sta-Kon® wire joints RB, RC, RP series 22-10 |
| DIE2500 | Spec-Kon™ insulated 22-10 AWG terminals |
| DIE1806** | Dragon Tooth™ terminals 22F, L, R-6 series |

** DIE1806 is not CSA certified or UL Listed.



Take advantage of our benefits.



| FEATURES | BAT22-6NV2 | BAT22-6 |
|----------------------------|---|--|
| Tool power | Electric gear driven — No hydraulics to leak or fail | Hydraulic pressure — Failures due to leaks |
| Body design | Compact design, light weight | Medium design, medium weight |
| Crimping head | Hardened steel w/build-in light | Aluminum – failures due to cracking |
| Expected life | 150,000 crimps | 40,000 crimps |
| Service interval | 40,000 crimps | 10,000 crimps |
| Self-calibrating | Dead-end design, closed dies = calibration | Dead-end design, closed dies = calibration |
| Bad-crimp detection | Audible beep and flashing light | None |
| Memory chip | # crimps, records errors, user, serial # | None |
| Battery | Dewalt 10.8 V lithium-ion | Special 9.6 V NiCd |
| Crimps / charge | 250 | 120 |
| Power read-out | Push button LED power read-out | None |
| Nominal ram speed | 1 second | 5 seconds |

Atlantic Provinces

Thomas & Betts Limited
Tel.: (902) 450-1307
Toll Free: 1-877-862-4357
Fax: (902) 450-1309

Quebec

Thomas & Betts Limited
Tel.: (450) 466-1102
Toll Free: 1-800-465-1399
Fax: (450) 466-1163

Ontario

Thomas & Betts Limited
Tel.: (905) 635-7888
Toll Free: 1-877-291-7771
Fax: (905) 635-7889

Manitoba/Saskatchewan

Thomas & Betts Limited
Tel.: (604) 598-9811
Toll Free: 1-866-540-8220
Fax: (604) 598-9840

Alberta

Thomas & Betts Limited
Tel.: (780) 424-7092
Toll Free: 1-888-664-5666
Fax: (780) 424-7093
Toll Free: 1-866-424-4082

British Columbia

Thomas & Betts Limited
Tel.: (604) 598-9811
Toll Free: 1-866-540-8220
Fax: (604) 598-9840

