

A complete protector plate family to meet the requirements of CEC Rule 12-516



The Iberville® C166 series prevents cable damage without obstructing dry wall installation

The Canadian Electrical Code, Rule 12-516 (1) requires that a safety zone of at least 32 mm be left between nonmetallic sheathed cable and the edges of the stud, joists and similar structures through which it is pulled. If the safety zone cannot be respected, cables must be protected using approved metal protection devices.

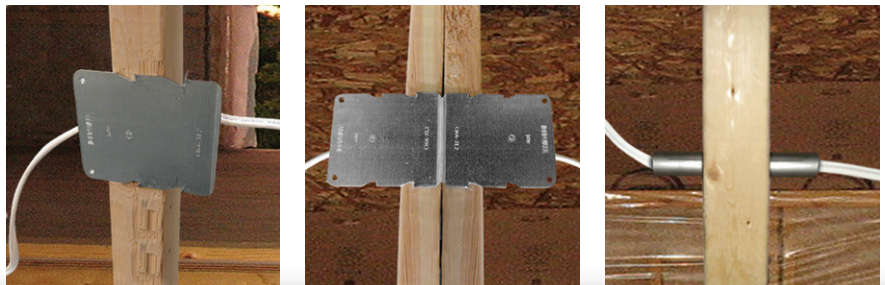
- Iberville® C166 family – a complete range of solutions to meet this requirement
- Heavy duty steel construction to stop penetration of nails and screws
- Protector plates have integrated nailing prongs
- Tube protector can be installed before or after the cable is pulled
- Does not obstruct dry wall installation
- For complete details, view our installation video at www.tnb.ca/video
- CSA Certified
- Designed and manufactured in Canada



Meet code requirements

Full range of solutions

Eliminate risk of cable damage



Thomas & Betts. Your best connection for innovative solutions.

Meet code requirements quickly and efficiently

Extract from Canadian Electrical Code – Nonmetallic sheathed cable Article 12-516

1. Where the cable is run through studs, joists, or similar members, the outer surfaces of the cable shall be kept a distance of at least 32 mm from the edges of members, or the cable shall be effectively protected from mechanical injury.
2. Where the cable is run through or along metal studs, joists, sheathing or cladding, it shall be
 - a. located so as to be effectively protected from mechanical injury both during and after installation;
 - b. protected where it passes through a member by an insert approved for the purpose and adequately secured in place.
3. Where the cable is installed immediately behind a baseboard, it shall be effectively protected from mechanical injury from driven nails.

Iberville® CI66 Series – a complete range of solutions

		
CI66-FPP	CI66-PPH	CI66-SS
		
CI66-T	CI66-XL	CI66-XL-2

View our installation video at www.tnb.ca/video



Iberville® CI66 protector plates



CAT. NO.	DESCRIPTION	DIMENSIONS (width x height)
CI66-FPP	Forenze protector plate	2-3/8 x 3-1/2 in.
CI66-PPH	Half-cylinder protector	1-1/4 x 3 in.
CI66-SS	Steel stud protector plate	4-3/8 x 1-7/8 in.
CI66-T	Cylindrical protector	4-1/4 x 3/4 in.
CI66-XL	Extra-long protector plate	4-1/4 x 3-3/4 in.
CI66-XL-2	Double XL protector plate	8-1/2 x 3-3/4 in.

Atlantic Provinces

Thomas & Betts Limited
Tel.: (902) 450-1307
Toll Free: 1-877-862-4357
Fax: (902) 450-1309

Quebec

Thomas & Betts Limited
Tel.: (450) 466-1102
Toll Free: 1-800-465-1399
Fax: (450) 466-1163

Ontario

Thomas & Betts Limited
Tel.: (905) 858-1010
Toll Free: 1-877-291-7771
Fax: (905) 858-1080

Manitoba/Saskatchewan

Thomas & Betts Limited
Tel.: (604) 598-9811
Toll Free: 1-866-540-8220
Fax: (604) 598-9840

Alberta

Thomas & Betts Limited
Tel.: (780) 424-7092
Toll Free: 1-888-664-5666
Fax: (780) 424-7093
Toll Free: 1-866-424-4082

British Columbia

Thomas & Betts Limited
Tel.: (604) 598-9811
Toll Free: 1-866-540-8220
Fax: (604) 598-9840