


**E147**  
Flat Steel Washer

**STD PACK: 100**

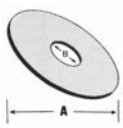


| Cat. No.    | Size | Wt./C lb |
|-------------|------|----------|
| E147-1/4EG  | 1/4  | .67      |
| E147-5/16EG | 5/16 | 1.11     |
| E147-3/8EG  | 3/8  | 1.49     |
| E147-1/2EG  | 1/2  | 3.85     |
| E147-5/8EG  | 5/8  | 7.69     |
| E147-3/4EG  | 3/4  | 9.89     |
| E147-7/8EG  | 7/8  | 15.40    |

Available in Stainless Steel.

**EF147**  
Fender Washer

**STD PACK: 100**




| Cat. No.     | Size | A     | B    | Wt./C lb |     |
|--------------|------|-------|------|----------|-----|
| EF147-1/4EGC | 1/4  | 1-1/4 | 5/16 | 3.1      |     |
| EF147-3/8EGC | 3/8  | 1-1/2 | 7/16 | 2.9      |     |
|              |      | 1/2   | 2    | 9/16     | 5.0 |

Available in Stainless Steel.

**E148**  
Lock Washer

**STD PACK: 100**



| Cat. No.   | Size | Wt./C lb |
|------------|------|----------|
| E148-1/4EG | 1/4  | .26      |
| E148-3/8EG | 3/8  | .50      |
| E148-1/2EG | 1/2  | 1.09     |
| E148-5/8EG | 5/8  | 2.57     |

Available in Stainless Steel.

**E142**  
Hex Head Cap Screw

**STD PACK: 100**




| Cat. No.       | Size      | Wt./C lb |
|----------------|-----------|----------|
| E142-1/4x100EG | 1/4x1     | 1.74     |
| E142-1/4x150EG | 1/4x1-1/2 | 2.43     |
| E142-3/8x100EG | 3/8x1     | 4.17     |
| E142-3/8x150EG | 3/8x1-1/2 | 5.64     |
| E142-1/2x100EG | 1/2x1     | 8.94     |
| E142-1/2x150EG | 1/2x1-1/2 | 10.00    |
| E142-1/2x200EG | 1/2x2     | 11.19    |
| E142-1/2x225EG | 1/2x2-1/4 | 11.90    |
| E142-1/2x250EG | 1/2x2-1/2 | 12.52    |
| E142-1/2x275EG | 1/2x2-3/4 | 13.22    |

Available in Stainless Steel.


**E150S**  
Lag Bolt

**STD PACK: 50**



| Cat. No.          | Drill Size | Size      | Wt./C lb |
|-------------------|------------|-----------|----------|
| E150S-3/8x1-1/2EG | 1/4        | 3/8x1-1/2 | 5        |
| E150S-3/8x2EG     | 1/4        | 3/8x2     | 7        |
| E150S-3/8x2-1/2EG | 1/4        | 3/8x2-1/2 | 8        |
| E150S-3/8x3EG     | 1/4        | 3/8x3     | 9        |
| E150S-1/2x1-1/2EG | 11/32      | 1/2x1-1/2 | 12       |
| E150S-1/2x2EG     | 11/32      | 1/2x2     | 13       |
| E150S-1/2x2-1/2EG | 11/32      | 1/2x2-1/2 | 15       |
| E150S-1/2x3EG     | 11/32      | 1/2x3     | 18       |

**E151**  
Coach Screw Rod




| Cat. No.      | Rod Size in. | Standard Rod Lengths in. | Wt./C lb |
|---------------|--------------|--------------------------|----------|
| E151-3/8x4EG  | 3/8          | 4                        | 9        |
| E151-3/8x6EG  | 3/8          | 6                        | 14       |
| E151-3/8x8EG  | 3/8          | 8                        | 22       |
| E151-3/8x10EG | 3/8          | 10                       | 29       |
| E151-3/8x12EG | 3/8          | 12                       | 35       |
| E151-1/2x4EG  | 1/2          | 4                        | 17       |
| E151-1/2x6EG  | 1/2          | 6                        | 22       |
| E151-1/2x8EG  | 1/2          | 8                        | 40       |
| E151-1/2x10EG | 1/2          | 10                       | 51       |

Machine threaded opposite end, carbon steel.

**H104**  
Hanger Rod  
Continuous Threaded

**STD PACK: 3**

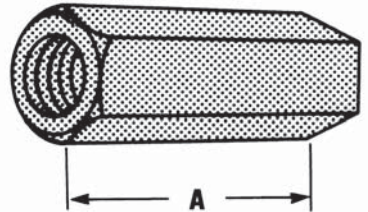


- Black available upon request.
- Sold per foot; standard length, 10 ft
- Also available in stainless steel (304 and 316) standard length 6 ft
- National coarse thread

| Cat. No.       | Thread Size | Wt./lb 100 ft | Design Load lb |
|----------------|-------------|---------------|----------------|
| H104-1/4x10EGC | 1/4         | 12.5          | 150            |
| H104-3/8x10EGC | 3/8         | 29            | 610            |
| H104-1/2x10EGC | 1/2         | 53.5          | 1130           |
| H104-5/8x10EGC | 5/8         | 85            | 1810           |
| H104-3/4x10EGC | 3/4         | 123           | 2710           |
| H104-7/8x10EG  | 7/8         | 130           | 3770           |
| H104-1x10EG    | 1           | 214           | 4960           |

Available in 12' Stainless Steel.

**H119**  
Rod Couplings



Standard Rod Coupling  
Example: H119-1/2EG

| Rod Size | A     | Wt./C lb |
|----------|-------|----------|
| 1/4      | 7/8   | 1.90     |
| 5/16     | 7/8   | 3.75     |
| 3/8      | 1-1/8 | 3.50     |
| 1/2      | 1-1/4 | 5.50     |
| 5/8      | 2-1/8 | 18.00    |
| 3/4      | 2-1/4 | 28.00    |
| 7/8      | 2-1/2 | 55.00    |
| 1        | 2-1/4 | 56.00    |

Rod Reducer Coupling  
Example: H119-1/4x3/8EG

| Rod Size   | A     | Wt./C lb |
|------------|-------|----------|
| 1/4 to 3/8 | 1-1/2 | 3.50     |
| 3/8 to 1/2 | 1-1/4 | 6.70     |
| 1/2 to 5/8 | 1-1/4 | 14.00    |
| 5/8 to 3/4 | 1-1/2 | 21.00    |
| 3/4 to 7/8 | 1-3/4 | 40.00    |

Order by product number, rod size, and finish.  
Available in Stainless Steel.

**H122**  
Trapnut™ Strut Fastener

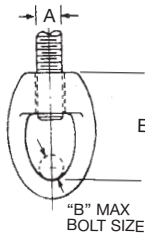
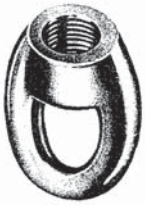


**Finishes**  
Electrogalvanized (EG)  
GoldGalv®  
Stainless Steel Type 316 (SS6)



| Cat. No.      | Size | Design Load lb | Std. Ctn. |
|---------------|------|----------------|-----------|
| H 122 1/4     | 1/4  | 150            | 50        |
| H 122 3/8     | 3/8  | 590            | 50        |
| H 122 1/2     | 1/2  | 1080           | 50        |
| H 122 1/4 EG  | 1/4  | 150            | 50        |
| H 122 3/8 EG  | 3/8  | 590            | 50        |
| H 122 1/2 EG  | 1/2  | 1080           | 50        |
| H 122 1/4 SS6 | 1/4  | 150            | 50        |
| H 122 3/8 SS6 | 3/8  | 590            | 50        |
| H 122 1/2 SS6 | 1/2  | 1080           | 50        |

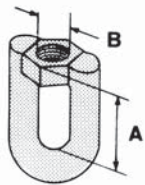
**M117**  
Eye Socket



| Rod Size | Pipe Size     | B   | E       | Wt./C lb | Design Load, lb |
|----------|---------------|-----|---------|----------|-----------------|
| 1/4      | 3/8           | 1/4 | 1-11/32 | 5        | 230             |
| 3/8      | 1/2 - 2       | 1/4 | 1-11/32 | 7        | 610             |
| 1/2      | 2-1/2 - 3-1/2 | 1/4 | 1-17/32 | 13       | 1130            |
| 5/8      | 4 - 5         | 3/8 | 1-13/16 | 19       | 1810            |
| 3/4      | 6             | 1/2 | 2-5/32  | 31       | 2400            |
| 7/8      | 8             | 1/2 | 2-11/32 | 44       | 2800            |

**Standard Finishes - Bare (B), Electrogalvanized (EG)**  
Malleable iron. For attaching hanger rod to various types of hangers and beam clamps  
Order by product number, rod size, and finish. **Example: M117-1/4B**  
Complies with Specification MSS SP69, Type 16.

**E120**  
Swivel Joint

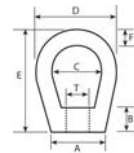
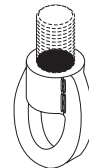


| Cat. No. | Size | A     | B   | Wt./C lb | Design Load lb |
|----------|------|-------|-----|----------|----------------|
| E120-3/8 | 3/8  | 1-3/8 | 3/8 | 15       | 1000           |
| E120-1/2 | 1/2  | 1-1/2 | 1/2 | 25       | 1800           |

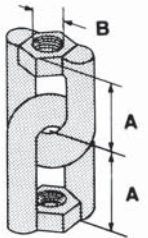
**E120A**  
Weldless Eye Nut

**Standard Finish - Bare (B)**  
Drop Forged Steel  
For use on high temperature piping installations.  
Order by product number and rod size.  
**Example: E120A-3/8B**

| Rod Size | A     | B     | C      | D     | E     | F   | Wt./C lb | Design Load lb |
|----------|-------|-------|--------|-------|-------|-----|----------|----------------|
| 3/8      | 7/8   | 5/8   | 1-1/4  | 2     | 2-1/2 | 3/8 | 20       | 2700           |
| 1/2      | 7/8   | 5/8   | 1-1/4  | 2     | 2-1/2 | 3/8 | 22       | 2700           |
| 5/8      | 1-3/8 | 3/4   | 1-1/2  | 2-1/2 | 3     | 1/2 | 60       | 5000           |
| 3/4      | 1-3/8 | 3/4   | 1-1/2  | 2-1/2 | 3     | 1/2 | 56       | 5000           |
| 7/8      | 1-1/2 | 1-5/8 | 1-5/16 | 3-5/8 | 4-1/2 | 3/4 | 174      | 10000          |
| 1        | 1-1/2 | 1-5/8 | 1-5/16 | 3-5/8 | 4-1/2 | 3/4 | 168      | 10000          |

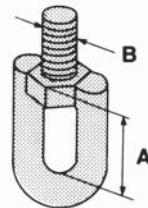


**E122**  
Swivel Joint



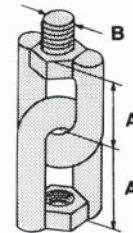
| Cat. No. | Size | A     | B   | Wt./C lb | Design Load lb |
|----------|------|-------|-----|----------|----------------|
| E122-3/8 | 3/8  | 1-3/8 | 3/8 | 28       | 1000           |
| E122-1/2 | 1/2  | 1-1/2 | 1/2 | 48       | 1800           |

**E130**  
Swivel Joint



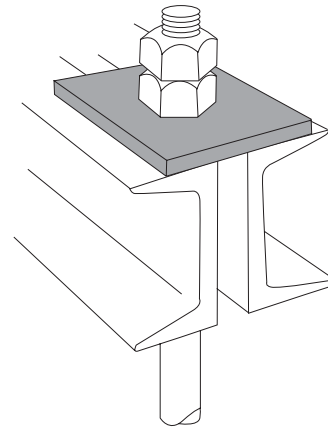
| Cat. No. | Size | A     | B   | Wt./C lb | Design Load lb |
|----------|------|-------|-----|----------|----------------|
| E130-3/8 | 3/8  | 1-3/8 | 3/8 | 23       | 1000           |
| E130-1/2 | 1/2  | 1-1/2 | 1/2 | 28       | 1800           |

**E131**  
Swivel Joint



| Cat. No. | Size | A     | B   | Wt./C lb | Design Load lb |
|----------|------|-------|-----|----------|----------------|
| E131-3/8 | 3/8  | 1-3/8 | 3/8 | 25       | 1000           |
| E131-1/2 | 1/2  | 1-1/2 | 1/2 | 52       | 1800           |

**C781**  
Square Washer



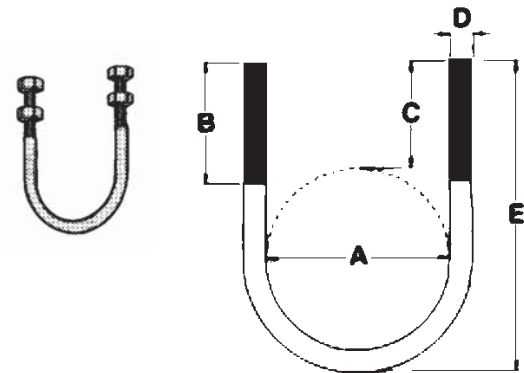
\*Finishes  
B  
HDG  
EG  
SS6

**STD  
PACK:  
50**

Used for beam applications.  
For channel applications use AB241.

| Cat. No.  | Rod Size | Hole Size | Overall Dimensions | Wt./C lb |
|-----------|----------|-----------|--------------------|----------|
| C781-3/8* | 3/8      | 7/16      | 3 x 3 x 3/16       | 27       |
| C781-1/2* | 1/2      | 9/16      | 3 x 3 x 3/16       | 27       |
| C781-5/8* | 5/8      | 11/16     | 3 x 3 x 1/4        | 47       |
| C781-3/4* | 3/4      | 13/16     | 3 x 3 x 1/4        | 42       |
| C781-7/8* | 7/8      | 15/16     | 4 x 4 x 3/8        | 85       |
| C781-1*   | 1        | 1-1/8     | 4 x 4 x 3/8        | 160      |

**H115**  
Standard U-Bolt



| Pipe Size | A       | B      | C       | D   | E        | Wt./C lb | Design Load lb |
|-----------|---------|--------|---------|-----|----------|----------|----------------|
| 1/2       | 15/16   | 1-3/4  | 1-1/2   | 3/8 | 2-3/4    | 13       | 1500           |
| 3/4       | 1-1/8   | 1-3/4  | 1-5/8   | 3/8 | 3-1/16   | 15       | 2000           |
| 1         | 1-3/8   | 1-7/8  | 1-5/8   | 3/8 | 3-5/16   | 16       | 2500           |
| 1-1/4     | 1-23/32 | 1-3/4  | 1-15/32 | 3/8 | 3-1/2    | 17       | 2500           |
| 1-1/2     | 2       | 1-3/4  | 1-7/16  | 3/8 | 3-3/4    | 18       | 2500           |
| 2         | 2-7/16  | 2-1/16 | 1-7/8   | 3/8 | 4-11/16  | 32       | 3300           |
| 2-1/2     | 2-15/16 | 2-1/16 | 1-13/16 | 3/8 | 5-1/8    | 34       | 4000           |
| 3         | 3-9/16  | 2      | 1-3/4   | 3/8 | 5-11/16  | 38       | 4000           |
| 3-1/2     | 4-3/32  | 2      | 1-23/32 | 3/8 | 6-3/16   | 40       | 4000           |
| 4         | 4-19/32 | 2-1/4  | 1-31/32 | 1/2 | 6-15/16  | 46       | 4000           |
| 5         | 5-5/8   | 3      | 2-7/32  | 1/2 | 8-5/16   | 101      | 4000           |
| 6         | 6-3/4   | 3-3/4  | 2-13/16 | 5/8 | 10-1/8   | 197      | 4000           |
| 8         | 8-3/4   | 3-3/4  | 2-13/16 | 5/8 | 12-1/8   | 233      | 4000           |
| 10        | 10-7/8  | 4      | 3       | 3/4 | 14-9/16  | 491      | 5400           |
| 12        | 12-7/8  | 4-1/4  | 3-1/4   | 7/8 | 16-15/16 | 773      | 7500           |

For sizes 14 to 36", contact your Regional Sales Office.

**Standard Finishes - Electrogalvanized (EG), GoldGalv®, Stainless Steel or Bare (B)**

**Example: H115-1/2EG**

Sizes through 4" furnished with one hex nut per leg.  
Sizes 5" and above furnished with two hex nuts per leg.  
Order by Cat. No., pipe size, finish.  
Complies with Specification MSS SP69, Type 24.