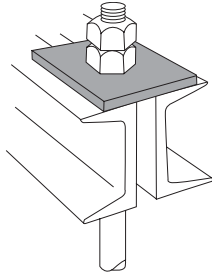


Beam Fittings

C781
Square Washer



*Finishes
B
HDG
EG
SS6

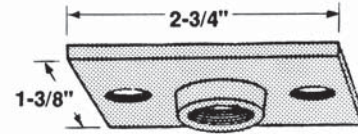
Used for beam applications.
For channel applications use AB241.

**STD
PACK:
50**

Cat. No.	Rod Size	Hole Size	Overall Dimensions	Wt./C lb
C781-3/8*	3/8	7/16	3 x 3 x 3/16	27
C781-1/2*	1/2	9/16	3 x 3 x 3/16	27
C781-5/8*	5/8	11/16	3 x 3 x 1/4	47
C781-3/4*	3/4	13/16	3 x 3 x 1/4	42
C781-7/8*	7/8	15/16	4 x 4 x 3/8	85
C781-1*	1	1-1/8	4 x 4 x 3/8	160

M742R
Ceiling Flange

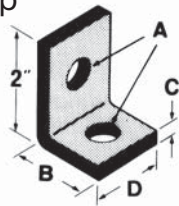
*Finishes
B
EG



Cat. No.	Rod Size	Wt./C lb
M742R-3/8*	3/8	16
M742R-1/2*	1/2	16

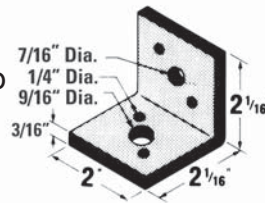
540
Side Beam
Hanger Clip

*Finishes
B
EG
GoldGalv®



Cat. No.	A	B	C	D	Wt./C lb
540-3/8*	7/16	1-7/8	1/4	7/8	38
540-1/2*	9/16	1-7/8	1/4	1-5/8	36
540-5/8*	11/16	2-1/2	3/8	2	84
540-3/4*	13/16	2-1/2	3/8	2	113

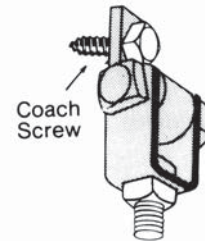
542
Side Beam
Hanger Clip



Standard Finish - GoldGalv®
For 3/8" and 1/2" rods.

Cat. No.	Rod Size	Design Load lb	Wt./C lb
542-3/8	3/8	610	35
542-1/2	1/2	1000	38

S541
Swing Connector



3/8" x 1-3/4" bolt,
nut and clevis
included.

Standard Finish - GoldGalv®
For use with wood beam.

Cat. No.	Rod Size	Wt./C lb
S541-3/8	3/8	31

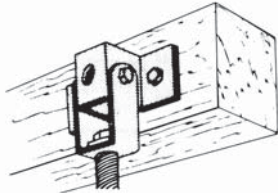
Beam Clamps

SECTION 4

Beam Fittings

U577

Clevis and Swing Connector

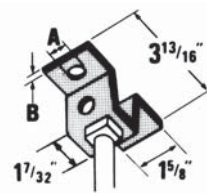


Standard Finish - GoldGalv®
For use with wood beam.

Cat. No.	Rod Size	Wt./C lb
U577-1/2	1/2	69

U576

Hanger Clevis

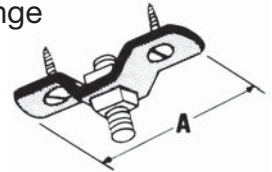


Standard Finish - GoldGalv®
For rods up to 1/2"
Mounting holes 7/16" diameter.
For use with wood beam.

Cat. No.	Material		
	Hole A	Thickness B	Wt./C lb
U576-3/8	7/16	3/16	27
U576-1/2	9/16	3/16	27

U579

Ceiling Flange



Standard Finish - GoldGalv®
Malleable Iron
Nuts and wood screws not included.
Mounting holes 13/32"

Cat. No.	A	Wt./C lb
U579-3/8	3-1/2	30
U579-1/2	4-1/4	50

Materials

HDG(C)
EG(C)
(No suffix)

Hot-Dipped Galvanized
Electrogalvanized
GoldGalv®

SS6(C)
B

Stainless Steel 316
Bare

Thomas & Betts