

Ty-Rap®

Cable Tie Installation Tools



Ty-Rap® Cable Tie Installation Tool

The Most Comfortable and Efficient Hand Tool Available for Installing Cable Ties!!

Thomas & Betts set out to develop a high performance and very reliable hand-operated cable tie installation tool. This new and improved Ty-Rap® Cable Tie Installation Tool is the result, and it fits the bill in every aspect. It's ergonomic with more features than any competing tool on the market.

Our engineers carefully considered user comfort and designed this rugged yet lightweight, well-balanced tool to reduce stress, fatigue and the risk of carpal tunnel syndrome and other cumulative trauma disorders to the hand and wrist. They didn't stop with ergonomics, however. This new tool offers a flush cable tie tail-to-head trim, a longer handle stroke requiring less handle force, higher tension capabilities and much, much more!



Designed for Efficiency

- Wide cable-tie insertion gap makes it easier to insert tie into tool
- Tension adjustment wheel on nose offers easy access and quick setting — about five times faster than competing tools!
- Tension-locking mechanism maintains constant tension setting, even when tool is frequently put down and picked up again
- Flush tail-to-head cut-off eliminates sharp cable tie ends that can cut or scratch installers, wires and nearby devices
- Longest stroke length available on the market — a full 1" — means fewer handle-tensioning cycles to save time and lower installation costs

Designed for Comfort

- 360° rotating nose offers maximum flexibility in any position, especially in tight spaces — no twisting of tool required!
- Adjustable grip span adapts to fit large or small hands
- Anti-recoil cut-off mechanism reduces shock and vibration to hand and wrist
- High-low handle travel feature offers lowest handle force with highest tension in any hand-operated cable tie installation tool on the market
- Handles constructed from rugged, lightweight, high-impact polymer in a balanced design with soft, over-molded, round-edged grips for added user comfort

The two Ty-Rap® Cable Tie Installation Tools install either 18-50 lb. tensile strength cable ties or 50-120 lb. tensile strength cable ties.

Specifications:

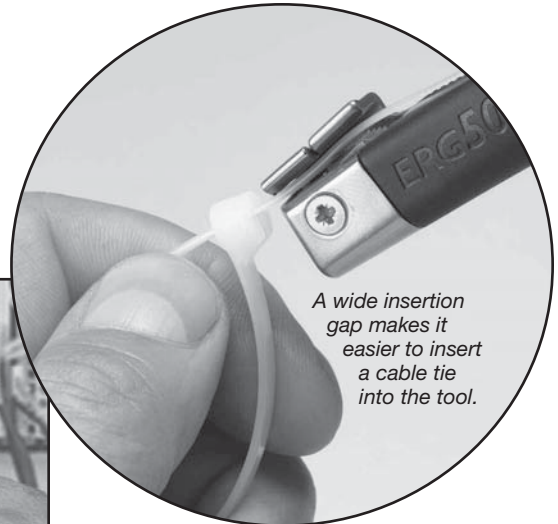
Dimensions: 7" L x 5" H x 1-5/8" W
Weight: 9oz

Cat. Number	Description	Std. Pkg. Qty.	UPC Number
<i>Cable Tie Installation Tool</i>			
ERG50	Tool for 18-50 lb. Cable Ties	1	78620986729
ERG120	Tool for 50-120 lb. Cable Ties	1	78620986730

Ty-Rap®

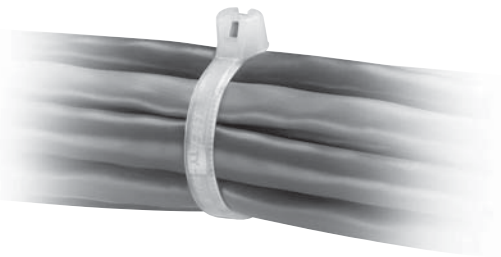
Cable Tie Installation Tools

Ty-Rap® Cable Tie Installation Tool Features



A wide insertion gap makes it easier to insert a cable tie into the tool.

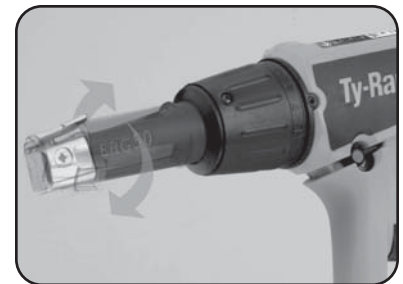
The Ty-Rap® Cable Tie Installation Tool trims cable ties flush, leaving no sharp edges behind to scratch or cut people or wires. It holds trimmed-off tails captive, leaving no mess behind to clean up.



The adjustable grip span offers a comfortable custom fit for any size hand, large or small.



The easy-access tension adjustment wheel, located on the nose, enables quick tension setting — up to five times faster than other tools on the market. Tension can be locked to maintain a constant setting.

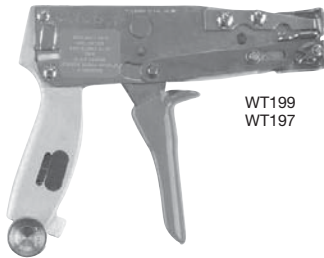


The swivel head enables you to get into any tight space — no twisting of tool required!

Cable Tie Installation Tools



WT193A



WT199
WT197



WT1-TB



WT2-TB



WT3D
WT3S

Stainless Steel Installation Tool

Cat. No.	Description	Std. Pkg.
DAS250	Installation Tool for Stainless Steel Ties	1

Installation Tools

WT193A Installation Tool

Cat. No.	Description	Body Width (in.)	Std. Pkg.	Wt. Each
WT193A	Pistol-type, easy tension adjustment, cuts tail off flush	.094-.184	1	10 oz.

WT199/WT197 Installation Tool

Cat. No.	Description	Body Width (in.)	Std. Pkg.	Wt. Each
WT197	Pistol-type, easy tension adjustment, cuts tail off flush	.301	1	10 oz.
WT199	Pistol-type, easy tension adjustment, cuts tail off flush	.094-.184	1	10 oz.

* Mil Spec Approved (WT197 - MS90387-2; WT199 - MS90387-1)

WT1-TB/WT2-TB Installation Tool

Lightweight, hand-operated cable tying tools install cable ties up to .301 inch wide and .080 inch thick. Made of high-impact plastic and steel to withstand shock and rough handling, they are symmetrical in design for use by both left-hand and right-hand operators.

They cinch up the tie with a squeeze action, and cut away the excess tail when twisted 180 degrees. A specially designed pawl cuts away the tail if the tension limit is exceeded, thereby preventing the cable tie from being over tightened. Ideally suited to spot-tying applications.

Cat. No.	Description	Body Width (in.)	Std. Pkg.	Wt. Each
WT1-TB	Compact hand tool made of high-impact plastic, preset tension, cuts off flush,	.094 thru .184	1	1-1/4 oz.
WT2-TB	lightweight and economical	.184-.301	1	1-1/4 oz.

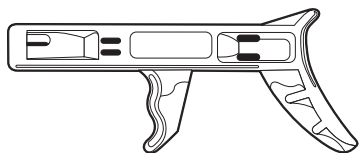
Deltec™ and Stainless Steel Tool

Cat. No.	Description	Body Width (in.)	Std. Pkg.	Wt. Each
WT3D	Installs self-locking Ty-Rap® cable ties and Thomas & Betts 2-piece lashing ties.	.184 thru .500	1	8 oz.
WT3S	Stainless steel cable tie installing tool.		1	8 oz.

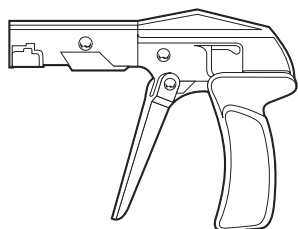


DAS250

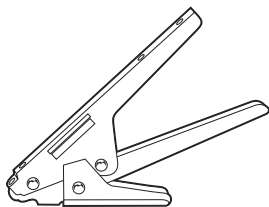
Cable Tie Installation Tools



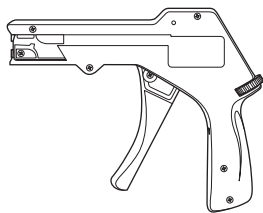
QC-100 (plastic)



L-200 Metal (steel)



L-300C Metal (steel)



L-400-C (plastic)

Cable Tie Tool

QC-100

A lightweight tool for least critical applications. Cinch tie to desired bundle and twist tool to remove excess strap. Recommended for use with 18 - 50 pound ties.

Cat. No.	Description	Tie Body Width	Std. Pkg.	Wt. Ea.
QC-100	Cable Tie Tool, 18-50 lb. tension Plastic Handle	.094-.184"	1	2.56 oz.

L-200

Economy tool for use with 18 - 50 pound ties. Automatic cut-off removes excess strap flush against cable tie head. Tool is equipped with adjustable tensioning.

Cat. No.	Description	Tie Body Width	Std. Pkg.	Wt. Ea.
L-200	Cable Tie Tool, 18-50 lb. tension Steel Handle	.094-.184"	1	13.44 oz.

L-300-C

Rugged construction makes this tool ideal for use with our 120 - 175 pound ties. Cinch tie to desired bundle and pull trigger to cut excess flush at Cable Tie head. Field proven durability.

Cat. No.	Description	Tie Body Width	Std. Pkg.	Wt. Ea.
L-300C	Cable Tie Tool, 120-175 lb. tension Steel Handle	.301-.345"	1	12 oz.

L-400-C

Heavy Duty tool for use with 18 - 50 pound ties. Automatic cut-off and adjustable tensioning for dependable use in assembly applications.

Cat. No.	Description	Tie Body Width	Std. Pkg.	Wt. Ea.
L-400-C	Cable Tie Tool, 18-50 lb. tension Plastic Handle	.094-.184"	1	7.52 oz.

Cable Tie Installation Tools

Semi-automatic air tool speeds cable tying operation – increases productivity



TR227
TR227R

- Semi-automatic operation—produces fast, effortless tying; cinches and trims tie in one fast motion
- Positive tail ejection—ensures high operating efficiency
- Precision engineered—gives you long-term dependable service, reduces operator fatigue
- Adjustable tension—provides uniform, quality installations over wide bundle diameter range

The TR227 pistol-type, semiautomatic air tool provides quick, effortless cable tying. It installs self-locking Ty-Rap® cable ties having body widths of .091" to .187" regardless of the tie's length or diameter of the wire bundle.

The trigger activated pneumatic tool:

1. tightens the tie to a preset tension,
2. trims it flush to the head,
3. positively ejects the cut-off portion of the cable tie in a single stroke.

The tool is so easy to operate that just installing a few ties is all the training required. This lightweight, precision tool is designed to be the workhorse in production tying operations. Its long barrel and narrow nose make it ideal for reaching into congested wire areas.

Designed with a comfort-grip handle to avoid operator fatigue, the tool is quality engineered to provide years of dependable service. Your wire harnessing and cable bundling will be accomplished quickly, easily, and at low installed cost.

Consistent tension for all bundle diameters

The tool has a convenient tension adjustment permitting each tie to be installed with the proper tension regardless of variations in the bundle diameter. To increase tension on the tie, turn the tension disc clockwise—to decrease tension, turn the disc counterclockwise.

The tension range is indicated on the disc from min. to max.

Modular head

If difficulty should arise with operation of the tool, a convenient modular head allows quick replacement. Simple on-line repair—downtime reduced to an absolute minimum.

Ty-Rap® Pneumatic Tool

Cat. No.	Description	Body Width (in.)
TR227	Semiautomatic hand tool	.094-.184
TR227R	Replaceable Head For TR227	