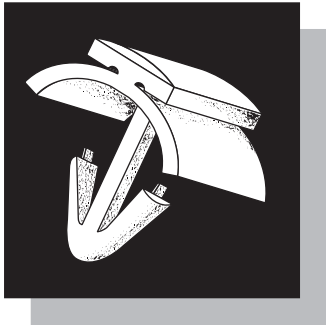
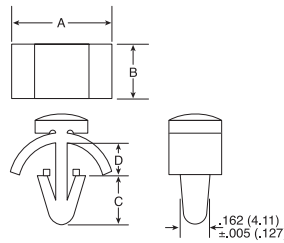


Cable Clamps and Clips

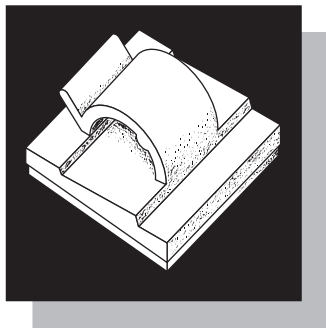


Snap Mounts

- For panel thicknesses from .060" to .150" to hold separate pieces of material together.
- Used with W4 or N4 Series Cable Clamps; allowable panel thickness is .030" to .050".
- Stocked in Natural 6/6 Nylon.
- UL Flammability 94 V-2.

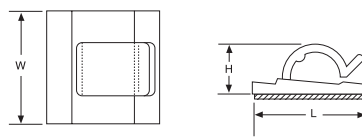


Cat. No.	Material	A		B		C		D		Bulk Pkg. Qty.
		Inch	(mm)	Inch	(mm)	Inch	(mm)	inch	(mm)	
MSNY-166-0-M	UV Black Nylon	.485	(12.32)	.312	(7.93)	.281	(7.14)	.180	(4.57)	1000
Tolerance ±				.010		(.254)				



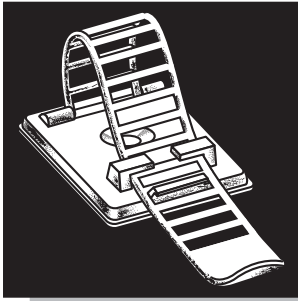
Round Adhesive Clips

- Diverse cable clamps for bundle diameters from .160 to .620.
- Mounted on a rubber based closed cell foam adhesive.
- Natural nylon.
- UL Flammability 94 V-2 (clip).
- Flexible center tang for removal or addition of cables.



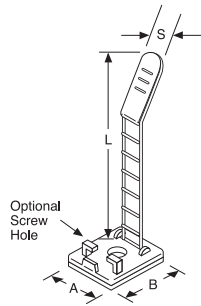
Cat. No.	Material	H Height		L Length		W Width		Maximum Bundle	Mounting Method	Bulk Pkg. Qty.
		Inch	(mm)	Inch	(mm)	Inch	(mm)			
RANY-160-9-D	Natural Nylon	.250	(6.35)	.630	(16.00)	.580	(14.73)	.160	Rubber Based Adhesive	500
RANY-280-9-D	Natural Nylon	.410	(10.41)	1.000	(25.40)	1.000	(25.40)	.280	Rubber Based Adhesive	500
RANY-530-9-D	Natural Nylon	.620	(15.75)	1.000	(25.40)	1.000	(25.40)	.530	Rubber Based Adhesive	500
RANY-620-9-D	Natural Nylon	.560	(14.22)	1.250	(31.75)	1.120	(28.45)	.620	Rubber Based Adhesive	500
Tolerance ±			.015		(.381)					

Cable Clamps and Clips

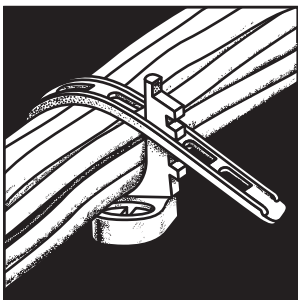


Adjustable Cable Clamps

- Three sizes for bundles from .118" to .984".
- Ladder style fastener is easily released and refastened.
- Supplied "single-cut" on a rubber based closed cell foam adhesive.
- Stocked in 6/6 Grey Nylon.
- UL Flammability 94 V-2 (clip).
- Optional screw hole for #4 or #5 flat head screw.

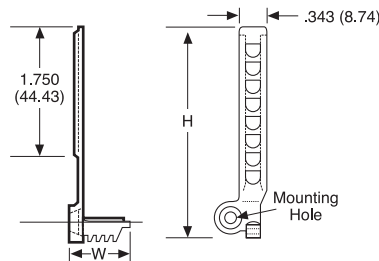


Cat. No.	Material	A		B		S		L		Applied Wire Range	Screw Hole Dia.		Std. Pkg.
		Inch	(mm)	Inch	(mm)	Inch	(mm)	Inch	(mm)		Inch	(mm)	
ULNY-013-8-C	Grey Nylon	.709	(18.00)	.984	(25.00)	.314	(8.00)	2.340	(59.50)	.118 - .500	.110	(2.79)	100
ULNY-018-8-C	Grey Nylon	.827	(21.00)	1.180	(30.00)	.472	(12.00)	3.120	(79.40)	.197 - .827	.110	(2.79)	100
ULNY-023-8-C	Grey Nylon	.984	(25.00)	1.380	(35.00)	.551	(14.00)	3.370	(85.50)	.275 - .984	.135	(3.43)	100
Tolerance ±			.015	(.381)		.010	(.254)	.030	(.762)				



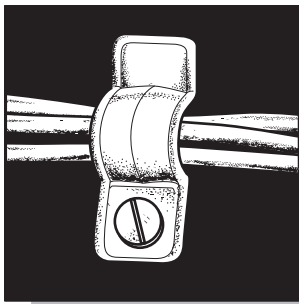
Tab-Lock Cable Clamps

- Adjustable cable clamp for diameters to 3/4".
- Releasable and reusable. Add or remove wires from bundles as required.
- #6 or #8 82° flat head machine screw to mount.
- Stocked in 6/6 Natural Nylon.
- UL Flammability 94 V-2.



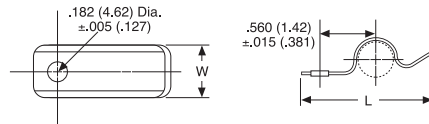
Cat. No.	Material	H Height		W Width		Adjustable Diameter	Mounting Method	Bulk Pkg. Qty.
		Inch	(mm)	Inch	(mm)			
TBNY-750-9-M	Natural Nylon	2.833	(71.96)	.850	(21.59)	.375 - .750 (9.52 - 19.05)	#6, #8 Flat Head Screw	1000
Tolerance ±			.030	(.762)	.015	(.381)		

Cable Clamps and Clips

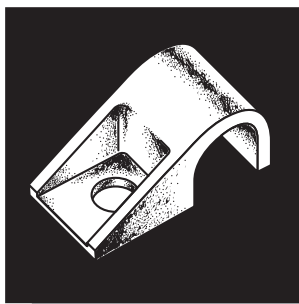


Flex Clips

- Utilizes nylon's "memory" to retain original shape even after repeated use.
- Ideal for temporary applications.
- Mounts with one #8 machine screw.
- Stocked in Natural 6/6 Nylon.
- UL Flammability 94 V-2.

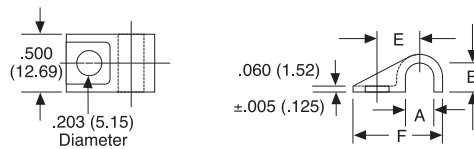


Cat. No.	Material	L Length		W Width		Max. Cable Diameter		Mounting Method	Bulk Pkg. Qty.
		Inch	(mm)	Inch	(mm)	Inch	(mm)		
FCNY-312-9-M	Natural Nylon	1.350	(34.29)	.500	(12.69)	.312	(7.93)	#8 Screw	1000
Tolerance ±		.020	(.508)	.015	(.381)				



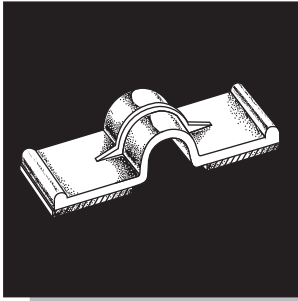
Half Clamps

- Rugged clamps with reinforced side panels for bundle diameters to .484".
- 203 mounting hole accepts #6 through #10 screws.
- Stocked in 6/6 Natural and heat stabilized Black Nylon.
- UL Flammability 94 V-2.



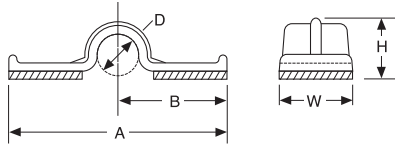
Cat. No.	Material	A		B		E		F		Bulk Pkg. Qty.
		Inch	(mm)	Inch	(mm)	Inch	(mm)	inch	(mm)	
CPNY-115-9-M	Natural Nylon	.115	(2.92)	.115	(2.92)	.314	(7.98)	.675	(17.15)	1000
CPNY-172-9-M	Natural Nylon	.172	(4.36)	.172	(4.36)	.336	(8.53)	.732	(18.59)	1000
CPNY-234-9-M	Natural Nylon	.234	(5.94)	.234	(5.94)	.370	(9.40)	.793	(20.14)	1000
CPNY-297-9-M	Natural Nylon	.297	(7.54)	.297	(7.54)	.400	(10.16)	.859	(21.82)	1000
CPNY-422-9-M	Natural Nylon	.422	(10.71)	.422	(10.71)	.470	(11.94)	.980	(24.89)	1000
CPNY-484-9-M	Natural Nylon	.484	(12.29)	.484	(12.29)	.500	(12.69)	1.044	(26.52)	1000
CPNY-115-0-M	Heat Stabilized Black Nylon	.115	(2.92)	.115	(2.92)	.314	(7.98)	.675	(17.15)	1000
CPNY-172-0-M	Heat Stabilized Black Nylon	.172	(4.36)	.172	(4.36)	.336	(8.53)	.732	(18.59)	1000
CPNY-234-0-M	Heat Stabilized Black Nylon	.234	(5.94)	.234	(5.94)	.370	(9.40)	.793	(20.14)	1000
CPNY-297-0-M	Heat Stabilized Black Nylon	.297	(7.54)	.297	(7.54)	.400	(10.16)	.859	(21.82)	1000
CPNY-359-0-M	Heat Stabilized Black Nylon	.359	(9.11)	.359	(9.11)	.435	(11.05)	.920	(23.37)	1000
CPNY-422-0-M	Heat Stabilized Black Nylon	.422	(10.71)	.422	(10.71)	.470	(11.94)	.980	(24.89)	1000
Tolerance ±			.010	(.254)			.015	(.381)		

Cable Clamps and Clips

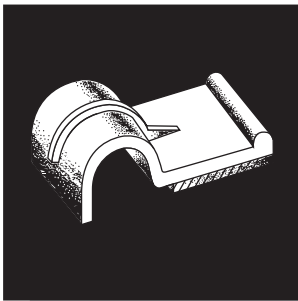


Press Clips

- 4 Sizes to accommodate bundles up to 1/2".
- Clips are provided on a rubber based closed cell foam adhesive.
- Stocked in 6/6 Natural Nylon. Contact factory for availability in special materials.
- UL Flammability 94 V-2 (clip).

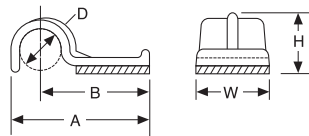


Cat. No.	Material	D Diameter		A		B		H		W		Bulk Pkg. Qty.
		Inch	(mm)	Inch	(mm)	Inch	(mm)	Inch	(mm)	Inch	(mm)	
PCNY-125-9-D	Natural Nylon	.125	(3.17)	.760	(19.30)	.380	(9.65)	.211	(5.36)	.375	(9.52)	500
PCNY-250-9-D	Natural Nylon	.250	(6.35)	1.380	(35.05)	.690	(17.52)	.324	(8.23)	.500	(12.69)	500
PCNY-375-9-D	Natural Nylon	.375	(9.52)	1.470	(37.32)	.735	(18.61)	.444	(11.29)	.625	(15.87)	500
PCNY-500-9-D	Natural Nylon	.500	(12.69)	1.590	(40.57)	.795	(20.19)	.585	(14.85)	.750	(19.05)	500
Tolerance ±		.010	(.254)	.020	(.508)			.010	(.254)			



Half Press Clips

- 4 Sizes to accommodate bundles up to 1/2".
- Clips are provided on a rubber based closed cell foam adhesive.
- Stocked in 6/6 Natural Nylon. Contact factory for availability in special materials.
- UL Flammability 94 V-2 (clip).



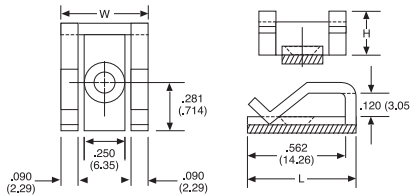
Cat. No.	Material	D Diameter		A		B		H		W		Bulk Pkg. Qty.
		Inch	(mm)	Inch	(mm)	Inch	(mm)	Inch	(mm)	Inch	(mm)	
HCNY-125-9-M	Natural Nylon	.125	(3.17)	.493	(12.52)	.380	(9.65)	.180	(4.57)	.375	(9.52)	1000
HCNY-250-9-M	Natural Nylon	.250	(6.35)	.865	(21.97)	.690	(17.52)	.325	(8.25)	.500	(12.69)	1000
HCNY-375-9-M	Natural Nylon	.375	(9.52)	.980	(24.88)	.750	(19.05)	.415	(10.54)	.625	(15.87)	1000
HCNY-500-9-M	Natural Nylon	.500	(12.69)	1.110	(28.19)	.820	(20.83)	.560	(14.22)	.750	(19.05)	1000
Tolerance ±		.010	(.254)	.020	(.508)			.010	(.254)			

Cable Clamps and Clips



Flat Cable Clips

- Low profile clip for single or multiple layers of flat ribbon cable.
- FANY supplied on a rubber based closed cell foam adhesive.
- Screw mountable with a #4 flat head screw.
- Flexible tangs allow for easy removal and replacement of desired cable.
- Stocked in 6/6 Natural Nylon.
- UL Flammability 94 V-2 (clip).

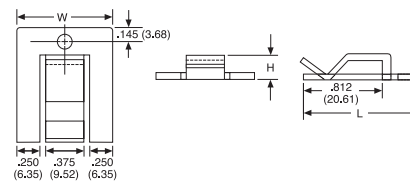


Cat. No.	Material	H Height		L Length		W Width		Mounting Method	Bulk Pkg. Qty.
		Inch	(mm)	Inch	(mm)	Inch	(mm)		
FANY-562-9-D	Natural Nylon	.264	(6.70)	.625	(15.87)	.500	(12.69)	Adhesive	500
FSNY-562-9-D	Natural Nylon	.233	(5.92)					#4 Screw	500
Tolerance ±		.010	(.254)		.015	(.381)			



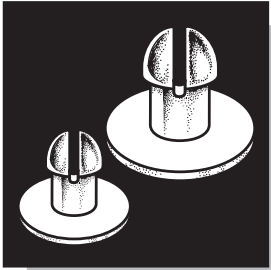
Flat Cable Screw Clip

- Flat ribbon cable clamp with mounting hole for #8 screw.
- Stocked in Natural 6/6 Nylon.
- Flexible center tang allows for easy removal and replacement of desired cable.
- UL Flammability 94 V-2.



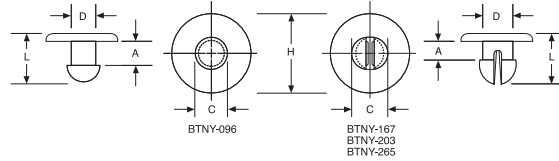
Cat. No.	Material	H Height		L Length		W Width		Mounting Method	Bulk Pkg. Qty.
		Inch	(mm)	Inch	(mm)	Inch	(mm)		
FSNY-812-9-D	Natural Nylon	.250	(3.17)	1.187	(30.15)	1.000	(25.40)	#8 Screw	500
Tolerance ±		.010	(.254)		.015	(.381)			

Cable Clamps and Clips



Stud Buttons

- Utilize nylon's "memory" to retain original shape after compression.
- Part numbers contain recommended mounting hole diameters.
- For use with Catamount™ strapping or panel thickness through .165" with mounting holes through #1/4.
- Stocked in heat stabilized Black Nylon for high heat applications.
- UL Flammability 94 V-2.

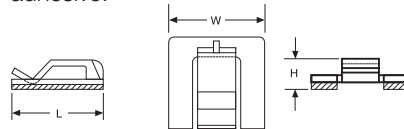


Cat. No.	H Head Dia.		A		C		D		L		Bulk Pkg. Qty.
	Inch	(mm)	Inch	(mm)	Inch	(mm)	Inch	(mm)	Inch	(mm)	
BTNY-167-0-D	.343	(8.71)	.125	(3.17)	.202	(5.13)	.165	(4.19)	.297	(7.54)	500
BTNY-203-0-D	.468	(11.88)	.156	(3.96)	.238	(6.04)	.200	(5.08)	.359	(9.11)	500
BTNY-265-0-D	.580	(14.73)	.171	(4.34)	.300	(7.62)	.260	(6.60)	.410	(10.41)	500
Tolerance ±					.010	(.254)					

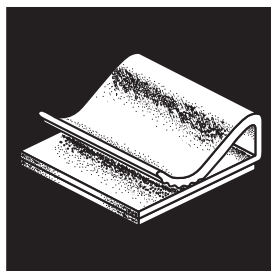


Flat Adhesive Clips

- Low profile clip for single or multiple layers of flat ribbon cable.
- Supplied on a rubber based closed cell foam adhesive.
- Flexible center tang for removal or addition of cables.
- Stocked in 6/6 Natural Nylon.
- UL Flammability 94 V-2 (clip).

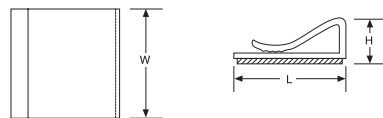


Cat. No.	Material	H Height		L Length		W Width		Mounting Method	Bulk Pkg. Qty.
		Inch	(mm)	Inch	(mm)	Inch	(mm)		
FANY-812-9-D	Natural Nylon	.281	(7.14)	1.000	(25.40)	1.000	(25.40)	Adhesive	500
Tolerance ±		.010	(.254)	.015	(.381)				



Flat PVC Clips

- Low profile clip for single or multiple layers of flat ribbon cable.
- "Single-Cut" on a rubber based closed cell foam adhesive.
- Grey PVC.
- UL Flammability 94 V-0 (clip).



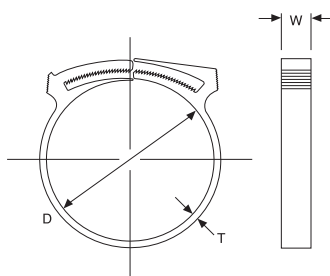
Cat. No.	Material	H Height		L Length		W Width		Mounting Method	Bulk Pkg. Qty.
		Inch	(mm)	Inch	(mm)	Inch	(mm)		
FRPV-1000-8-D	Grey PVC	.415	(5.84)	1.062	(26.97)	1.000	(25.40)	Adhesive	500
Tolerance ±		.015	(.381)	.030	(.762)	.015	(.381)		

Cable Clamps and Clips



Gator Grip Hose Clamp

- 16 sizes for bundle diameters to 2-3/8".
- Removable and reusable. Twist by hand or with pliers to remove.
- Stocked in black Nylon. 100 pieces per package.
- UL Flammability 94 V-2.
- Request samples for testing to your application. Tested to 250 PSI.



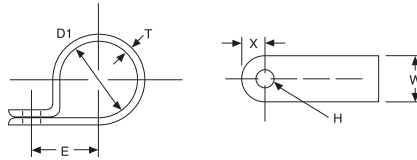
Cat. No.	D Nominal Diameter		D1 Closed Diameter		T Thickness		W Width		Bulk Pkg. Qty.
	Inch	(mm)	Inch	(mm)	Inch	(mm)	inch	(mm)	
GGNY-344-0-C	13/32	(10.32)	11/32	(8.73)	.070	(1.8)	.220	(5.6)	100
GGNY-406-0-C	15/32	(11.92)	13/32	(10.32)	.070	(1.8)	.220	(5.6)	100
GGNY-468-0-C	17/32	(13.49)	15/32	(11.91)	.070	(1.8)	.220	(5.6)	100
GGNY-531-0-C	19/32	(15.08)	17/32	(13.49)	.070	(1.8)	.220	(5.6)	100
GGNY-593-0-C	21/32	(16.67)	19/32	(15.08)	.070	(1.8)	.220	(5.6)	100
GGNY-672-0-C	13/16	(20.64)	43/64	(17.07)	.070	(1.8)	.220	(5.6)	100
GGNY-750-0-C	7/8	(22.23)	3/4	(19.05)	.070	(1.8)	.220	(5.6)	100
GGNY-875-0-C	1	(25.40)	7/8	(22.23)	.070	(1.8)	.220	(5.6)	100
GGNY-953-0-C	13/32	(27.78)	61/64	(24.21)	.070	(1.8)	.310	(7.9)	100
GGNY-1031-0-C	1-13/16	(30.16)	1-1/32	(26.19)	.070	(1.8)	.310	(7.9)	100
GGNY-1250-0-C	1-7/16	(36.51)	1-1/4	(31.75)	.070	(1.8)	.360	(9.1)	100
GGNY-1406-0-C	1-5/8	(41.28)	1-13/32	(35.72)	.070	(1.8)	.360	(9.1)	100
GGNY-1593-0-C	1-13/16	(46.04)	1-19/32	(40.48)	.070	(1.8)	.360	(9.1)	100
GGNY-1687-0-C	1-29/32	(48.42)	1-11/16	(42.86)	.070	(1.8)	.360	(9.1)	100
GGNY-1875-0-C	2-1/8	(53.98)	1-7/8	(47.63)	.070	(1.8)	.400	(10.2)	100
GGNY-2125-0-C	2-1/8	(60.33)	2-3/8	(53.98)	.070	(1.8)	.400	(10.2)	100
Tolerance ±			.010 (.254)						

Cable Clamps and Clips



Plain Edge Cable Clamps

- Fully radiused inside edges with size markings in inches and millimeters for easy identification.
- Stocked in Natural White and Black 6/6 Nylon.
- 18 diameters and 2 widths with mounting holes for #4 through #10 screws.
- Plain edge cable clamps are designed to perform to NAS-1397P.



*Note: "C" Also 100 packs available. Replace "-M" with "-C" for 100 pack.

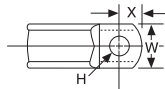
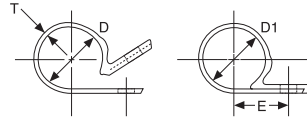
Cat. No.		D1 Closed Diameter		E		T Thickness		W Width		H Hole Diameter		X		Bulk Pkg. Qty.
White	Black	Inch	(mm)	Inch	(mm)	Inch	(mm)	Inch	(mm)	Inch	(mm)	Inch	(mm)	
N4NY-002-9-M	N4NY-002-0-M	.125	(3.2)	.343	(8.7)	.050	(1.3)	.375	(9.5)	.170	(4.3)	.218	(5.5)	1000
N4NY-003-9-M	N4NY-003-0-M	.187	(4.8)	.378	(9.6)	.050	(1.3)	.375	(9.5)	.170	(4.3)	.218	(5.5)	1000
N4NY-004-9-M	N4NY-004-0-M	.250	(6.4)	.421	(10.7)	.050	(1.3)	.375	(9.5)	.170	(4.3)	.218	(5.5)	1000
N4NY-005-9-M	N4NY-005-0-M	.312	(7.9)	.441	(11.2)	.050	(1.3)	.375	(9.5)	.170	(4.3)	.218	(5.5)	1000
N4NY-006-9-M	N4NY-006-0-M	.375	(9.5)	.464	(11.8)	.050	(1.3)	.375	(9.5)	.170	(4.3)	.218	(5.5)	1000
N4NY-007-9-M	N4NY-007-0-M	.437	(11.1)	.500	(12.7)	.050	(1.3)	.375	(9.5)	.170	(4.3)	.218	(5.5)	1000
N4NY-008-9-M	N4NY-008-0-M	.500	(12.7)	.530	(13.5)	.050	(1.3)	.375	(9.5)	.170	(4.3)	.218	(5.5)	1000
N4NY-002B-9-M	N4NY-002B-0-M	.125	(3.2)	.343	(8.7)	.050	(1.3)	.375	(9.5)	.203	(5.2)	.218	(5.5)	1000
N4NY-003B-9-M	N4NY-003B-0-M	.187	(4.8)	.378	(9.6)	.050	(1.3)	.375	(9.5)	.203	(5.2)	.218	(5.5)	1000
N4NY-004B-9-M	N4NY-004B-0-M	.250	(6.4)	.421	(10.7)	.050	(1.3)	.375	(9.5)	.203	(5.2)	.218	(5.5)	1000
N4NY-005B-9-M	N4NY-005B-0-M	.312	(7.9)	.441	(11.2)	.050	(1.3)	.375	(9.5)	.203	(5.2)	.218	(5.5)	1000
N4NY-006B-9-M	N4NY-006B-0-M	.375	(9.5)	.464	(11.8)	.050	(1.3)	.375	(9.5)	.203	(5.2)	.218	(5.5)	1000
N4NY-007B-9-M	N4NY-007B-0-M	.437	(11.1)	.500	(12.7)	.050	(1.3)	.375	(9.5)	.203	(5.2)	.218	(5.5)	1000
N4NY-008B-9-M	N4NY-008B-0-M	.500	(12.7)	.530	(13.5)	.050	(1.3)	.375	(9.5)	.203	(5.2)	.218	(5.5)	1000
N6NY-004C-9-M	N6NY-004C-0-M	.250	(6.4)	.437	(11.1)	.060	(1.5)	.500	(12.7)	.203	(5.2)	.218	(5.5)	1000
N6NY-005C-9-M	N6NY-005C-0-M	.312	(7.9)	.474	(12.0)	.060	(1.5)	.500	(12.7)	.203	(5.2)	.218	(5.5)	1000
N6NY-006C-9-M	N6NY-006C-0-M	.375	(9.5)	.500	(12.7)	.060	(1.5)	.500	(12.7)	.203	(5.2)	.218	(5.5)	1000
N6NY-007C-9-M	N6NY-007C-0-M	.437	(11.1)	.533	(13.5)	.060	(1.5)	.500	(12.7)	.203	(5.2)	.218	(5.5)	1000
N6NY-008C-9-M	N6NY-008C-0-M	.500	(12.7)	.553	(14.1)	.060	(1.5)	.500	(12.7)	.203	(5.2)	.218	(5.5)	1000
N6NY-009-9-M	N6NY-009-0-M	.562	(14.3)	.603	(15.3)	.060	(1.5)	.500	(12.7)	.203	(5.2)	.218	(5.5)	1000
N6NY-010-9-M	N6NY-010-0-M	.625	(15.9)	.625	(15.9)	.060	(1.5)	.500	(12.7)	.203	(5.2)	.218	(5.5)	1000
N6NY-011-9-M	N6NY-011-0-M	.687	(17.4)	.665	(16.9)	.060	(1.5)	.500	(12.7)	.203	(5.2)	.218	(5.5)	1000
N6NY-012-9-M	N6NY-012-0-M	.750	(19.1)	.699	(17.8)	.060	(1.5)	.500	(12.7)	.203	(5.2)	.218	(5.5)	1000
N6NY-013-9-M	N6NY-013-0-M	.812	(20.6)	.765	(19.9)	.060	(1.5)	.500	(12.7)	.203	(5.2)	.218	(5.5)	1000
N6NY-014-9-M	N6NY-014-0-M	.875	(22.2)	.795	(20.2)	.060	(1.5)	.500	(12.7)	.203	(5.2)	.218	(5.5)	1000
N6NY-016-9-M	N6NY-016-0-M	1.000	(25.4)	.825	(20.9)	.060	(1.5)	.500	(12.7)	.203	(5.2)	.218	(5.5)	1000
N6NY-018-9-D	N6NY-018-0-D	1.125	(28.6)	.940	(23.8)	.060	(1.5)	.500	(12.7)	.203	(5.2)	.218	(5.5)	500
N6NY-019-9-D	N6NY-019-0-D	1.187	(30.1)	.963	(24.5)	.060	(1.5)	.500	(12.7)	.203	(5.2)	.218	(5.5)	500
N6NY-020-9-D	N6NY-020-0-D	1.250	(31.8)	.980	(24.9)	.060	(1.5)	.500	(12.7)	.203	(5.2)	.218	(5.5)	500
N6NY-022-9-D	N6NY-022-0-D	1.375	(34.9)	1.045	(26.5)	.060	(1.5)	.500	(12.7)	.203	(5.2)	.218	(5.5)	500
N6NY-024-9-D	N6NY-024-0-D	1.500	(38.1)	1.114	(28.3)	.060	(1.5)	.500	(12.7)	.203	(5.2)	.218	(5.5)	500
Tolerance ±		.010 (.254)	.030 (.762)	.005 (.127)	.015 (.381)	.010 (.254)	.030 (.762)							

Cable Clamps and Clips



Self-Aligning Cable Clamps

- Molded-in saddle washer enhances performance and appearance.
- Self-Alignment feature makes this clamp ideal for assembly applications.



- 14 diameters and 2 widths with mounting holes for #4 through #10 screws.
- UL Flammability W.NY 94 V-2; W.TZ 94 V-0.
- Stocked in Natural and heat stabilized black 6/6 Nylon, and Fluoropolymer for highest heat applications.
- Item numbers molded-in for easy identification.

Cat. No.	Material	D Nominal Diameter		D1 Closed Diameter		E		T Thickness		W Width		H Hole Diameter		X	Bulk Pkg. Qty.	
		Inch	(mm)	Inch	(mm)	Inch	(mm)	Inch	(mm)	Inch	(mm)	Inch	(mm)			
W4NY-125-9-M	Natural Nylon	.125	(3.17)	.114	(2.89)	.333	(8.46)	.040	(1.02)	.375	(9.52)	.167	(4.24)	.257	(6.53)	1000
W4NY-187-9-M	Natural Nylon	.187	(4.76)	.172	(4.36)	.355	(9.02)	.040	(1.02)	.375	(9.52)	.167	(4.24)	.218	(5.53)	1000
W4NY-250-9-M	Natural Nylon	.250	(6.34)	.234	(5.94)	.382	(9.70)	.040	(1.02)	.375	(9.52)	.167	(4.24)	.190	(4.83)	1000
W4NY-312-9-M	Natural Nylon	.312	(7.93)	.297	(7.54)	.422	(10.71)	.040	(1.02)	.375	(9.52)	.167	(4.24)	.205	(5.21)	1000
W4NY-375-9-M	Natural Nylon	.375	(9.52)	.359	(9.11)	.454	(11.53)	.040	(1.02)	.375	(9.52)	.167	(4.24)	.210	(5.33)	1000
W4NY-500-9-M	Natural Nylon	.500	(12.69)	.484	(12.29)	.490	(12.45)	.040	(1.02)	.375	(9.52)	.167	(4.24)	.266	(6.76)	1000
W6NY-187-9-M	Natural Nylon	.187	(4.76)	.172	(4.36)	.375	(9.52)	.060	(1.52)	.500	(12.69)	.203	(5.15)	.241	(6.12)	1000
W6NY-250-9-M	Natural Nylon	.250	(6.34)	.234	(5.94)	.407	(10.34)	.060	(1.52)	.500	(12.69)	.203	(5.15)	.241	(6.12)	1000
W6NY-312-9-M	Natural Nylon	.312	(7.93)	.297	(7.54)	.445	(11.30)	.060	(1.52)	.500	(12.69)	.203	(5.15)	.280	(7.11)	1000
W6NY-375-9-M	Natural Nylon	.375	(9.52)	.359	(9.11)	.484	(12.29)	.060	(1.52)	.500	(12.69)	.203	(5.15)	.291	(7.39)	1000
W6NY-437-9-M	Natural Nylon	.437	(11.11)	.422	(10.71)	.522	(13.25)	.060	(1.52)	.500	(12.69)	.203	(5.15)	.263	(6.68)	1000
W6NY-500-9-M	Natural Nylon	.500	(12.69)	.484	(12.29)	.560	(14.22)	.060	(1.52)	.500	(12.69)	.203	(5.15)	.272	(6.91)	1000
W6NY-562-9-M	Natural Nylon	.562	(14.28)	.547	(13.90)	.657	(16.68)	.060	(1.52)	.500	(12.69)	.203	(5.15)	.236	(5.99)	1000
W6NY-625-9-M	Natural Nylon	.625	(15.87)	.609	(15.46)	.637	(16.17)	.060	(1.52)	.500	(12.69)	.203	(5.15)	.290	(7.37)	1000
W6NY-687-9-M	Natural Nylon	.687	(17.46)	.672	(17.06)	.694	(17.63)	.060	(1.52)	.500	(12.69)	.203	(5.15)	.327	(8.31)	1000
W6NY-750-9-M	Natural Nylon	.750	(19.04)	.734	(18.64)	.726	(18.44)	.060	(1.52)	.500	(12.69)	.203	(5.15)	.326	(8.28)	1000
W6NY-812-9-M	Natural Nylon	.812	(20.63)	.797	(20.24)	.776	(19.71)	.060	(1.52)	.500	(12.69)	.203	(5.15)	.323	(8.20)	1000
W6NY-875-9-D	Natural Nylon	.875	(22.22)	.859	(21.81)	.733	(18.62)	.060	(1.52)	.500	(12.69)	.203	(5.15)	.310	(7.87)	500
W6NY-1000-9-D	Natural Nylon	1.000	(25.39)	.984	(24.99)	.881	(22.38)	.060	(1.52)	.500	(12.69)	.203	(5.15)	.292	(7.42)	500
W6NY-1250-9-D	Natural Nylon	1.250	(31.73)	1.227	(31.16)	1.010	(25.65)	.060	(1.52)	.500	(12.69)	.203	(5.15)	.339	(8.61)	500
W4NY-125-0-M	Heat Stabilized Black Nylon	.125	(3.17)	.114	(2.89)	.333	(8.46)	.040	(1.02)	.375	(9.52)	.167	(4.24)	.257	(6.53)	1000
W4NY-187-0-M	Heat Stabilized Black Nylon	.187	(4.76)	.172	(4.36)	.355	(9.02)	.040	(1.02)	.375	(9.52)	.167	(4.24)	.218	(5.53)	1000
W4NY-250-0-M	Heat Stabilized Black Nylon	.250	(6.34)	.234	(5.94)	.382	(9.70)	.040	(1.02)	.375	(9.52)	.167	(4.24)	.190	(4.83)	1000
W4NY-312-0-M	Heat Stabilized Black Nylon	.312	(7.93)	.297	(7.54)	.422	(10.71)	.040	(1.02)	.375	(9.52)	.167	(4.24)	.205	(5.21)	1000
W4NY-375-0-M	Heat Stabilized Black Nylon	.375	(9.52)	.359	(9.11)	.454	(11.53)	.040	(1.02)	.375	(9.52)	.167	(4.24)	.210	(5.33)	1000
W4NY-500-0-M	Heat Stabilized Black Nylon	.500	(12.69)	.484	(12.29)	.490	(12.45)	.040	(1.02)	.375	(9.52)	.167	(4.24)	.266	(6.76)	1000
W6NY-187-0-M	Heat Stabilized Black Nylon	.187	(4.76)	.172	(4.36)	.375	(9.52)	.060	(1.52)	.500	(12.69)	.203	(5.15)	.241	(6.12)	1000
W6NY-250-0-M	Heat Stabilized Black Nylon	.250	(6.34)	.234	(5.94)	.407	(10.34)	.060	(1.52)	.500	(12.69)	.203	(5.15)	.241	(6.12)	1000
W6NY-312-0-M	Heat Stabilized Black Nylon	.312	(7.93)	.297	(7.54)	.445	(11.30)	.060	(1.52)	.500	(12.69)	.203	(5.15)	.280	(7.11)	1000
W6NY-375-0-M	Heat Stabilized Black Nylon	.375	(9.52)	.359	(9.11)	.484	(12.29)	.060	(1.52)	.500	(12.69)	.203	(5.15)	.291	(7.39)	1000
W6NY-437-0-M	Heat Stabilized Black Nylon	.437	(11.11)	.422	(10.71)	.522	(13.25)	.060	(1.52)	.500	(12.69)	.203	(5.15)	.263	(6.68)	1000
W6NY-500-0-M	Heat Stabilized Black Nylon	.500	(12.69)	.484	(12.29)	.560	(14.22)	.060	(1.52)	.500	(12.69)	.203	(5.15)	.272	(6.91)	1000
W6NY-562-0-M	Heat Stabilized Black Nylon	.562	(14.28)	.547	(13.90)	.657	(16.68)	.060	(1.52)	.500	(12.69)	.203	(5.15)	.236	(5.99)	1000
W6NY-625-0-M	Heat Stabilized Black Nylon	.625	(15.87)	.609	(15.46)	.637	(16.17)	.060	(1.52)	.500	(12.69)	.203	(5.15)	.290	(7.37)	1000
W6NY-687-0-M	Heat Stabilized Black Nylon	.687	(17.46)	.672	(17.06)	.694	(17.63)	.060	(1.52)	.500	(12.69)	.203	(5.15)	.327	(8.31)	1000
W6NY-750-0-M	Heat Stabilized Black Nylon	.750	(19.04)	.734	(18.64)	.726	(18.44)	.060	(1.52)	.500	(12.69)	.203	(5.15)	.326	(8.28)	1000
W6NY-812-0-M	Heat Stabilized Black Nylon	.812	(20.63)	.797	(20.24)	.776	(19.71)	.060	(1.52)	.500	(12.69)	.203	(5.15)	.323	(8.20)	1000
W6NY-875-0-D	Heat Stabilized Black Nylon	.875	(22.22)	.859	(21.81)	.733	(18.62)	.060	(1.52)	.500	(12.69)	.203	(5.15)	.310	(7.87)	500
W6NY-1000-0-D	Heat Stabilized Black Nylon	1.000	(25.39)	.984	(24.99)	.881	(22.38)	.060	(1.52)	.500	(12.69)	.203	(5.15)	.292	(7.42)	500
W6NY-1250-0-D	Heat Stabilized Black Nylon	1.250	(31.73)	1.227	(31.16)	1.010	(25.65)	.060	(1.52)	.500	(12.69)	.203	(5.15)	.339	(8.61)	500
Tolerance ±				.010	(.254)	.030	(.762)	.005	(.127)	.015	(.381)	.010	(.254)	.030	(.762)	

(Continued)

Cable Clamps and Clips

Self-Aligning Cable Clamps (continued) – For Extreme Applications

Cat. No.	Material	D Nominal Diameter		D1 Closed Diameter		E		T Thickness		W Width		H Hole Diameter		X		Bulk Pkg. Qty.
		Inch	(mm)	Inch	(mm)	Inch	(mm)	Inch	(mm)	Inch	(mm)	Inch	(mm)	Inch	(mm)	
W4TZ-125-5-D	Fluoropolymer	.125	(3.17)	.114	(2.89)	.333	(8.46)							.257	(6.53)	500
W4TZ-187-5-D	Fluoropolymer	.187	(4.76)	.172	(4.36)	.355	(9.02)							.218	(5.53)	500
W4TZ-250-5-D	Fluoropolymer	.250	(6.34)	.234	(5.94)	.382	(9.70)	.040	(1.02)	.375	(9.52)	.167	(4.24)	.190	(4.83)	500
W4TZ-312-5-D	Fluoropolymer	.312	(7.93)	.297	(7.54)	.422	(10.71)							.205	(5.21)	500
W4TZ-375-5-D	Fluoropolymer	.375	(9.52)	.359	(9.11)	.454	(11.53)							.210	(5.33)	500
W4TZ-500-5-D	Fluoropolymer	.500	(12.69)	.484	(12.29)	.490	(12.45)							.266	(6.76)	500
W6TZ-187-5-D	Fluoropolymer	.187	(4.76)	.172	(4.36)	.375	(9.52)							.241	(6.12)	500
W6TZ-250-5-D	Fluoropolymer	.250	(6.34)	.234	(5.94)	.407	(10.34)									500
W6TZ-312-5-D	Fluoropolymer	.312	(7.93)	.297	(7.54)	.445	(11.30)							.280	(7.11)	500
W6TZ-375-5-D	Fluoropolymer	.375	(9.52)	.359	(9.11)	.484	(12.29)	.060	(1.52)	.500	(12.69)	.203	(5.15)	.291	(7.39)	500
W6TZ-437-5-D	Fluoropolymer	.437	(11.11)	.422	(10.71)	.522	(13.25)							.263	(6.68)	500
W6TZ-500-5-D	Fluoropolymer	.500	(12.69)	.484	(12.29)	.560	(14.22)							.272	(6.91)	500
W6TZ-625-5-D	Fluoropolymer	.625	(15.87)	.609	(15.46)	.637	(16.17)							.290	(7.37)	500
W6TZ-750-5-D	Fluoropolymer	.750	(19.04)	.734	(18.64)	.726	(18.44)							.326	(8.28)	500
Tolerance ±	Fluoropolymer			.010	(.254)	.030	(.762)	.005	(.127)	.015	(.381)	.010	(.254)	.030	(.762)	