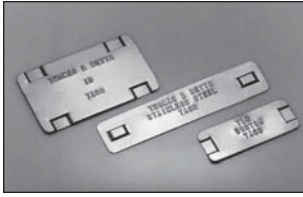
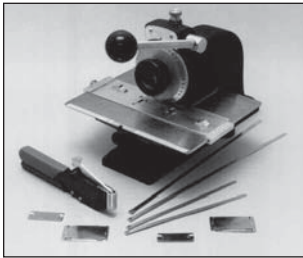


## Customized Embossed Tags Stainless Steel Tape Embossing System

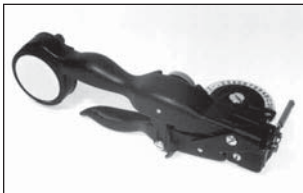


Identify your cable bundles with permanent, Type 304 stainless steel imprinted tags applied with stainless steel cable ties. After imprinting the tags, merely slip a tie through slots in the tag and fasten with the installation tool.

- Works with 1/4" wide ties.



For imprinting Thomas & Betts stainless steel I.D. tags. Includes special tag holder which provides quick, accurate positioning of tag. Comes with a 3/32" character imprinting wheel, standard (no substitutions allowed).



After making your tag, apply with stainless steel cable ties.

### I.D. Tagging System

Cat. No.	Width		Length		Weight	
	in.	mm	in.	mm	lb.	kg.
<b>SSID100</b>	.75	19.05	2.0	51	0.5	.22
<b>SSID101</b>	1.50	38.10	2.5	63	1.2	.55
<b>SSID102</b>	.75	19.05	3.5	89	0.8	.36

304 Stainless Steel

Packaging Quantity: 100/box

.015" (.254mm) Thickness

Note: Customized pre-embossed tags are available. Please consult Technical Service for details.

Add suffix (316) for 316 Stainless Steel.

### I.D. Tag Imprinter

Cat. No.	Description	Weight	
		lb.	kg.
<b>WTID200</b>	I.D. Tag Imprinter	29.5	13.41
<b>WTID290</b>	3/32" character imprinting wheel	-	-
<b>WTID281</b>	1/8" character imprinting wheel	-	-
<b>WTID283</b>	3/16" character imprinting wheel	-	-
<b>WTID300</b>	I.D. Marking Kit	-	-
<b>WTID204</b>	(Kit) WTID200 and WTID 283	-	-

Packaging Quantity: 1/box

### S.S. Tape Embossing System

Cat. No.	Description	Weight	
		lb.	kg.
<b>WTID400</b>	Hand-held tool for embossing S.S. I.D. Tape	2.57	1.17
<b>WTID405</b>	Replacement S.S. tape (21" long, 1/2" wide)	.18	.01

304 Stainless Steel

Packaging Quantity: 1/box

Note: The embossing tool comes complete with two rolls of stainless steel tape.