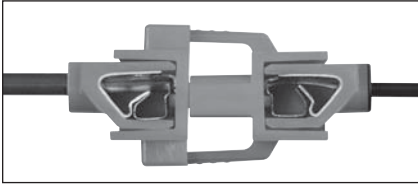


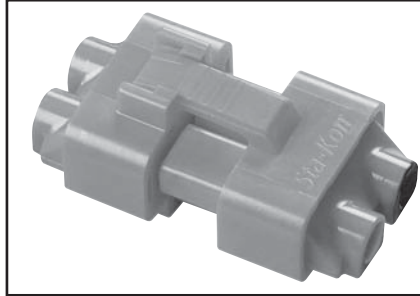
Sta-Kon®

Disconnects

**Faster and Easier to Install –
Just Push in the Wires!**



- Enables electricians changing ballasts to easily disconnect incoming power for safe servicing without having to trip the main power breaker
- Disconnect halves snap together and separate easily — but won't accidentally disconnect
- Foolproof design eliminates the potential for incorrect installation and reverse polarity
- Fits through 1/2 in. knockouts for easy retrofit
- Ballast hot-lead wire entry is colour-coded black for easy visibility
- Finger-safe on both sides
- For use in all non-residential fluorescent lighting applications and in ordinary location HID lighting applications — both up to 600V, 4A maximum
- Complies with NEC, CEC, UL and CSA requirements
- Sold in mated pairs (male/line and female/load sides)



Sta-Kon® Push-In Luminaire Disconnect

Cat. No.	Description	Std. Pack.
LD2P-Q	2-Wire push-in luminaire disconnect, contractor pack	25
LD2P-D	2-Wire push-in luminaire disconnect, bulk packaging	500

Meets 2009 CEC® Part 1 30-308(4) Requirements

Pin Terminals/Vinyl Terminals (Mini-Pack)



- Convenient 20-count packaging.
 - Wire ranges from 22 AWG to 10 AWG.
 - Vinyl Insulated Ring and forked-tongued terminals, female disconnects, butt-type splice connectors.
- Note: "CP" designates mini-pack quantities. Refer to other catalogue pages for description and dimensional information.

Sta-Kon® Mini-Pack Terminals

Cat. No.	Unit Qty.	Std. Pack.	Wire Range	Bolt Hole
18RA-6FCP	20	100	22-18	#6
18RA-8CP	20	100	22-18	#8
18RA-10CP	20	100	22-18	#10
14RB-6CP	20	100	16-14	#6
14RB-8CP	20	100	16-14	#8
14RB-10CP	20	100	16-14	#10
10RC-10CP	20	100	12-10	#10
10RC-14CP	20	100	12-10	1/4
18RA-8FCP	20	100	22-18	#8
18RA-10FCP	20	100	22-18	#10
14RB-6FCP	20	100	16-14	#6
14RB-8FCP	20	100	16-14	#8
14RB-10FCP	20	100	16-14	#10
10RC-8FCP	20	100	12-10	#8
10RC-10FCP	20	100	12-10	#10
2RA18XCP	20	100	22-18	—
2RB14XCP	20	100	16-14	—
2RC10XCP	20	100	12-10	—
18RA-250FCP	20	100	22-18	—
14RB-250FCP	20	100	16-14	—
10RC-250FCP	20	100	12-10	—

U.L. Listed E9809