

Technical Specifications



Applications:

- Limits flames and/or explosions to area within electrical system where they originate.
- Limits pressure piling.
- Required by NEC for conduit systems in hazardous locations 18" from an enclosure housing a heat producing or arcing device; on 2" and larger system which enters an enclosure containing splices; wherever conduit leaves a Class I, Division I area and enters a non-hazardous area.

Features/Benefits:

- Copper-free (less than .004 copper content) aluminum provides increased corrosion resistance.
- Precision cast and machined surfaces permit safer wire pulling.
- Precision NPT threaded hubs allow trouble-free field installation for rigid or IMC conduit.
- Large opening provides maximum working room for creating dam and seal pouring to speed up installation.
- Compact design permits close construction of parallel conduit runs.



Standard Materials:

- Sealing Fittings: Die cast aluminum alloy A360 (less than .004 copper content).
- Sealing Cement
- Fiber: Flame retardant Kaowool Type A fiber.

Standard Finish:

- Aluminum lacquer finish

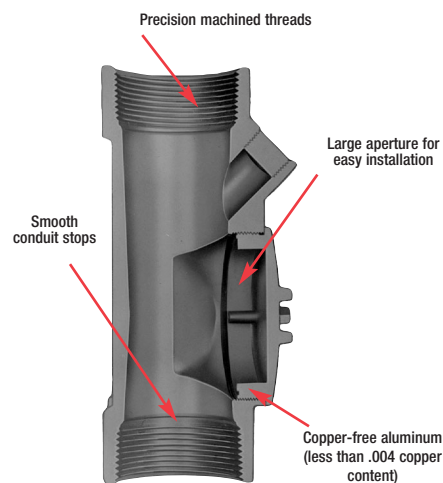


Compliances:

Compliances as noted on each page of the catalogue include:

- CSA Certified
- UL Listed
- Suitable for hazardous locations

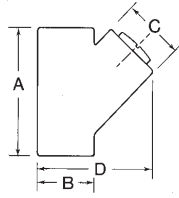
Class I, Groups C, D	NEMA 7CD
Class II, Groups E, F, G	9EFG
Class III, Divisions 1 and 2	12



Sealing Fittings • Hazardous Locations



EYVF



Cat. No.	Hub Size	Cement Qty	Fiber Qty	A	B	C	D
Vertical Sealing Fittings (Cast Aluminum)							
EYVF-1*	1/2	-	-	2-3/4	1-3/16	1-5/16	1/2
EYVF-2*	3/4	-	-	2-7/8	1-3/8		2-13/16
EYVF-3*	1	-	-	3-7/16	1-5/8	1-9/16	3-5/16
EYVF-11[‡]	1/2	2 oz.	1/32 oz.	2-3/4	1-3/16	1-5/16	1/2
EYVF-22[‡]	3/4	3 oz.	1/16 oz.	2-7/8	1-3/8		2-13/16
EYVF-33[‡]	1	4 oz.	1/8 oz.	3-7/16	1-5/8	1-9/16	3-5/16

* Packaged with an adequate amount of sealing compound close-up plugs installed.

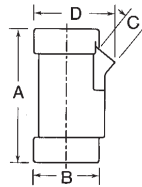
[‡] Approximate amount of cement and fiber required in oz. per hub.



EVHF-1 through 3



EVHF-3 through 6



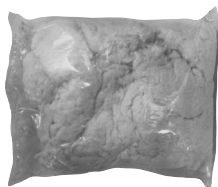
Cat. No.	Hub Size	Cement Qty	Fiber Qty	A	B	C	D
Vertical / Horizontal Sealing (Cast Aluminum)							
EVHF-1[‡]	1/2	2 oz.	1/32 oz.	4-1/32	1-5/32	1-1/64	1-7/8
EVHF-2[‡]	3/4	3 oz.		4-3/32	1-3/8		2-3/32
EVHF-3[‡]	1	4 oz.	4-3/8	13-9/64	2-5/16		
EVHF-4[‡]	1/2	4 oz.	1/4 oz.	5	2-1/16	1-1/8	2-7/8
EVHF-5[‡]	3/4	6 oz.			2-7/16		3-1/4
EVHF-6[‡]	1	12 oz.	1 oz.		2-15/16		3-3/4

[‡] Approximate amount of cement and fiber required in oz. per hub



EXSC

Cat. No.	Quantity	Volume (Cu. In.)
Sealing Cement		
EXSC-2	3.2 oz.	2.75
EXSC-8	13 oz.	11.50
EXSC-16	1 lb, 10 oz.	23.00



EXPF

Cat. No.	Quantity
Packing Fiber	
EXPF-16[†]	1 lb

[†] CSA not applicable

