

Technical Specifications

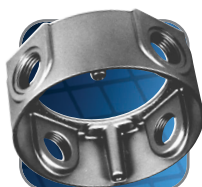


Applications:

- Boxes and covers protect wiring devices, switches, electronic components and terminal blocks in dry, damp and wet locations.
- Accessible wiring chamber provides a convenient location to maintain or change a system, pull conductors and make splices.
- Junction box for branch conduits.

Features / Benefits:

- Alloy A380 aluminum, certified zinc alloy, and stainless steel springs provide increased corrosion resistance.
- Die cast construction and industrial design combine to produce a rugged protective enclosure.
- Clean cover edges provide good gasket sealing.
- Precision cast and machined surfaces permit safer wire pulling.
- Clear cubic content markings.
- Convenient mounting lugs for a variety of mounting methods.
- Securely fastened mounting plates reduce costly call backs.



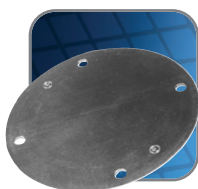
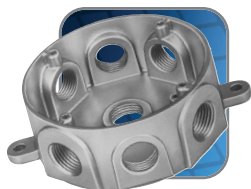
Standard Materials as noted:

- Boxes: Die cast aluminum alloy A380.
- Cover Plates: Stamped aluminum alloy.

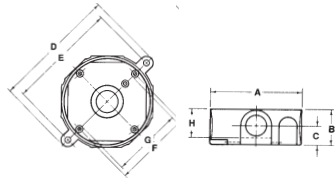
Compliances:

Compliances as noted on each page of the catalogue include:

- UL Listed
- Boxes: CSA Certified with factory installed ground screw.
- Covers: CSA Certified
- Covers suitable for use in wet locations with lids closed.

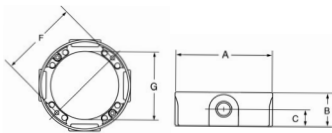


Round Boxes and Covers



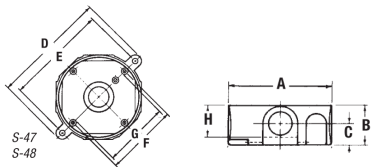
S110CN / S-48 / DS47BR

Cat. No.	Hub Size	No. of Hubs	A	B	C	D	E	F	G	H	Cu. In.
Outlet Boxes – 4-1/8” Dia. (Cast Aluminum)											
S110CN*	1/2	5	4-1/8	1-5/8	3/4	5-9/16	4-15/16	3-1/2	3-1/8	1-1/4	16.0
S110BRCN*											
S110WHCN*											
DS47BR*					7/8						17.0
S-48*	3/4										



SE-47 / SE-48

Cat. No.	Hub Size	No. of Hubs	A	B	C	D	E	F	G	H	Cu. In.
Outlet Box Extension – 4-1/8” Dia. (Cast Aluminum)											
SE-47*⁽¹⁾	1/2	4	4-1/8	1-5/8	13/16	-	-	3-1/2	3-1/16	-	18.3
SE-48*⁽¹⁾	3/4										



DS47B / DS48B

Cat. No.	Hub Size	No. of Hubs	A	B	C	D	E	F	G	H	Cu. In.
Outlet Box Kits – 4-1/8” Dia. (Cast Aluminum)											
DS47B*	1/2	5	4-1/8	2	7/8	5-9/16	4-15/16	3-1/2	3-1/8	1-1/4	17
DS48B*	3/4										

⁽¹⁾ CSA not applicable

*Raintight with cover closed and when used with appropriate Red Dot® boxes. See page 15 for close-up plugs.

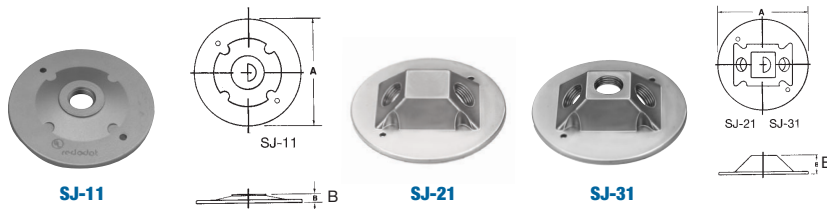
Dimensions are in inches.
Covers packed w/gasket and screws.





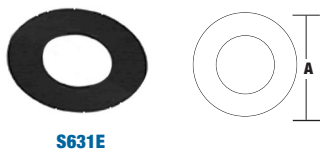
Cat. No.	Hub Size	No. of Hubs	A	B
Outlet Covers – 4-1/8" Dia. (Cast Aluminum)				
S341E	-	-	4-1/8	3/64
SS-B	-	-		3/8
S-1-RD	1/2	1		3/8
DSS-1				3/8
DSS-1-BR			3/8	
DSS-1-WH	3/4			
S-12 ⁽¹⁾				
S-3-RD	1/2	3	4-1/8	1-1/16
DSS-3				1-1/16
DSS-3-BR				1-1/16
DSS-3-WH				1-1/16
Y3PL				

⁽¹⁾ CSA not applicable



Cat. No.	Hub Size	No. of Hubs	A	B
Jumbo Outlet Covers – 4-1/2" Dia. (Cast Aluminium)				
SJ-11 ⁽¹⁾	1/2	1	4-1/2	3/8
SJ-21 ⁽¹⁾		2		1
SJ-31 ⁽¹⁾		3		1

⁽¹⁾ CSA not applicable



Cat. No.	A
Universal Round Gasket	
S621E ⁽¹⁾	4-3/16

⁽¹⁾ CSA not applicable



Dry-Tite® Round Boxes and Covers

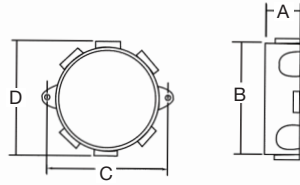
IBERVILLE®



CIC-8444 / CIC-8448



CIC-8495



Cat. No.	Hub Size		No. of Lugs	No. of Plugs	Description	A	B	C	D	Cu. In.
	Side	Bottom								
Weatherproof Junction Box Kits (Cast Aluminum)										
CIC-8444	4 X 1/2	1/2	2	4 X 1/2	Includes cover, gasket, plugs and mounting screws.	1-5/8	3-15/16	5	4-5/16	17.3
CIC-8446	4 X 3/4			3 X 3/4						
CIC-8448	4 X 1			1 X 1/2						
				3 X 1						
				1 X 1/2						
Outlet Box 4-1/2 Dia. (Cast Aluminum)										
CIC-8495⁽¹⁾	6 X 1/2	1/2	2	5 X 1/2		1-1/2	3-15/16	4-5/8	4-5/16	17.3

⁽¹⁾ See page 15 for close-up plugs.



CIC-93

Cat. No.	Description
Weatherproof Round Cover – 4-3/16" Dia. (Stamped Aluminum)	
CIC-93	For 4" weatherproof round box. Includes gasket and mounting screws.