

Technical Specifications



**Applications:**

- Low maintenance indoor/outdoor lighting where moisture, dirt, dust, corrosion and rough service are problems.
- Low profile fixture design for locations where low ceiling height presents a lighting problem.
- To light cold storage facilities, walkways, bridges, tunnels and security locations.
- Used with colored globes as warning, caution or directional lights.
- For 100 or 200 watt medium base incandescent lamps.
- Suitable for use in wet locations only when oriented as shown (mounted with lamp base up and guard/globe down).



**Features/Benefits:**

- Copper-free (less than .004 copper content) aluminum and stainless steel screws provide increased corrosion resistance.
- Precision cast and machined surfaces permit safer wire pulling.
- Fully threaded glass globes prevent cross threading assuring a tight seal.
- High quality replaceable porcelain socket with high-temperature leads result in a long-lasting fixture.
- Five mounting configurations packaged three different ways to suit all customer requirements.
- Colored, heat resistant and shatterproof Lexan® globes available.

**Standard Materials:**

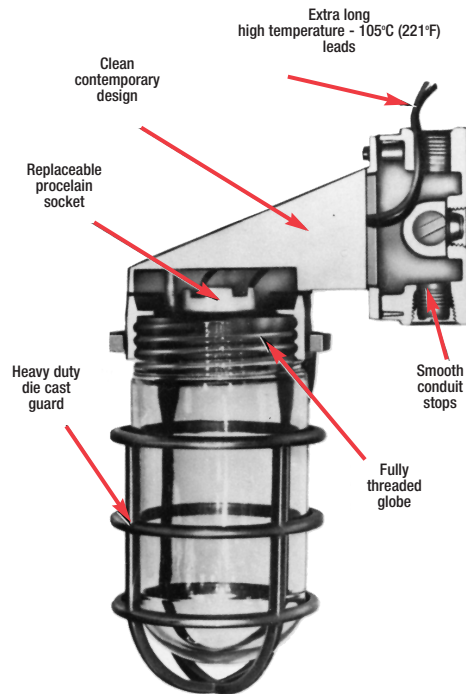
- Fixture and guards: Die cast aluminum alloy A360 (less than .004 copper content), with stainless steel screws.
- Globe: Glass.
- Socket: Center contact, porcelain, medium base.

**Standard Finish:**

- Aluminum lacquer finish

**Compliances:**

- UL Listed





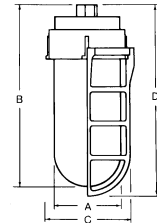
**VK-11**



**VKG-11**



**VKG-11-C**



Cat. No.	Hub Size	Max. Watt	Description	A	B	C	D
<b>Pendant Mount</b>							
<b>VK-11</b>	1/2	100	Pendant cap with screw terminals, gasket and screws	-	-	-	-
<b>VK-21</b>	3/4						
<b>VK-12</b>	1/2						
<b>VK-22</b>	3/4	200					
<b>VKG-11</b>	1/2						
<b>VKG-21</b>	3/4						
<b>VKG-12</b>	1/2	200	Pendant cap with screw terminals, gasket, screws <b>and globe</b>	4-3/8	10-1/8	-	-
<b>VKG-22</b>	3/4						
<b>VKG-11-C</b>	1/2						
<b>VKG-21-C</b>	3/4	100	Pendant cap with screw terminals, gasket, screws <b>and globe plus cast guard</b>	3-3/8	8-3/16	4-1/16	8-3/4
<b>VKG-12-C</b>	1/2						
<b>VKG-22-C</b>	3/4						



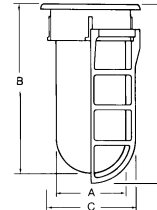
**VA-01**



**VAG-01**



**VAG-01-C**



Cat. No.	Max. Watt	Description	A	B	C	D
<b>Ceiling Mount with Adapter Plate</b>						
<b>VA-01</b>	100	Ceiling outlet box cap with socket with leads, gasket and screws	-	-	-	-
<b>VA-02</b>	200					
<b>VAG-01</b>	100	Ceiling outlet box cap with socket with leads, gasket, screws <b>and globe</b>	3-3/8	7-7/16	-	-
<b>VAG-02</b>	200					
<b>VAG-01-C</b>	100	Ceiling outlet box cap with socket with leads, gasket, screws <b>and globe plus cast guard</b>	3-3/8	7-7/16	4-1/16	7-15/16
<b>VAG-02-C</b>	200					

Note: For upright mounting only. Caution: In ordering Lexan Globe, wattage is rated 75% of standard globe size.



Dimensions are in inches.



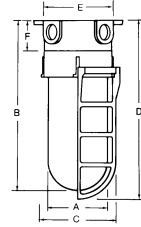
**VX-11**



**VXG-11**



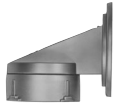
**VXG-11-C**



Cat. No.	Hub Size	Max. Watt	Description	A	B	C	D	E	F
<b>Ceiling Mount Cross Feed (5 tapped holes)</b>									
<b>VX-11</b>	1/2	100	Ceiling cross feed box with gaskets, socket with leads, screws, 4 close-up plugs and cast mounting lugs	-	-	-	-		
<b>VX-21</b>	3/4								
<b>VX-12</b>	1/2								
<b>VX-22</b>	3/4	200							
<b>VXG-11</b>	1/2								
<b>VXG-21</b>	3/4	100	Ceiling cross feed box with gaskets, socket with leads, screws, 4 close-up plugs, cast mounting lugs <b>and globe</b>	3-3/8	8-3/16	-	-	3-1/2	1-5/8
<b>VXG-12</b>	1/2								
<b>VXG-22</b>	3/4	200		4-3/8	10-3/4	-	-		
<b>VXG-11-C</b>	1/2								
<b>VXG-21-C</b>	3/4	100	Ceiling cross feed box with gaskets, socket with leads, screws, 4 close-up plugs, cast mounting lugs and <b>globe plus cast guard</b>	3-3/8	8-3/16	4-1/16	9-5/16		
<b>VXG-12-C</b>	1/2								
<b>VXG-22-C</b>	3/4	200		4-3/8	10-3/4	5-1/4	11-3/16		

Note: For upright mounting only. Caution: In ordering Lexan Globe, wattage is rated 75% of standard globe size.





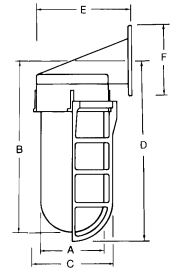
**VW**



**VWG-01**



**VWG-01-C**



Cat. No.	Max. Watt	Description	A	B	C	D	E	F
<b>Wall Mount with Adapter Plate</b>								
<b>VW-01</b>	100	Wall mount unit with socket with leads, gaskets and screws	-	-	-	-	4-3/4	3-1/2
<b>VW-02</b>	200						5-3/4	
<b>VWG-01</b>	100	Wall mount unit with socket with leads, gaskets, screws and <b>globe</b>	3-3/8	8-7/16	-	-	4-3/4	
<b>VWG-02</b>	200		4-3/8	10-3/8			5-3/4	
<b>VWG-01-C</b>	100	Wall mount unit with socket with leads, gaskets, screws and <b>globe plus cast guard</b>	3-3/8	8-7/8	4-1/16	8-15/16	4-3/4	
<b>VWG-02-C</b>	200		4-3/8	10-3/8	5-1/4	10-13/16	5-3/4	



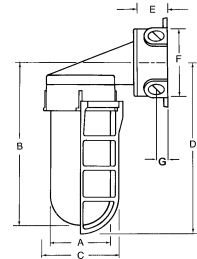
**VXW**



**VXWG-11**



**VXWG-11-C**



Cat. No.	Hub Size	Max. Watt	Description	A	B	C	D	E	F
<b>Wall Mount Cross Feed (5 tapped holes)</b>									
<b>VXW-11</b>	1/2	100	Wall mount cross feed with socket with leads, gaskets, screws, 4 close-up plugs and cast mounting lugs	-	-	-	-	-	-
<b>VXW-21</b>	3/4								
<b>VXW-12</b>	1/2	200							
<b>VXW-22</b>	3/4								
<b>VXWG-11</b>	1/2	100	Wall mount cross feed with socket with leads, gaskets, screws, 4 close-up plugs, cast mounting lugs and <b>globe</b>	3-3/8	8-7/16	-	-	1-5/8	3-1/2
<b>VXWG-21</b>	3/4								
<b>VXWG-12</b>	1/2	200		4-3/8	10-3/8				
<b>VXWG-22</b>	3/4								
<b>VXWG-11-C</b>	1/2	100	Wall mount cross feed with socket with leads, gaskets, screws, 4 close-up plugs, cast mounting lugs and <b>globe plus cast guard</b>	3-3/8	8-7/16	4-1/16	8-15/16	-	-
<b>VXWG-21-C</b>	3/4								
<b>VXWG-12-C</b>	1/2	200		4-3/8	10-3/8	5-3/16	10-13/16		
<b>VXWG-22-C</b>	3/4								

Dimensions are in inches.





MCL150C

Cat. No.	Hub Size	Max. Watt	Description
<b>Ceiling Mount (5 holes)</b>			
<b>MCL150C</b>	1	150	Can be surface mounted or mounted to a junction box

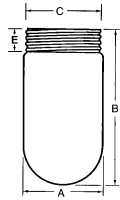


MCL150W

Cat. No.	Hub Size	Max. Watt	Description
<b>Wall Mount (5 holes)</b>			
<b>MCL150W</b>	1	150	Can be mounted in a vertical position (globe pointing down only)



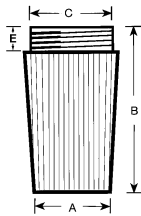
GLASS GLOBES



VGL



LEXAN GLOBES



VGLL

Cat. No.	Max. Watt	Description	A	B	C	E
<b>Threaded Globes</b>						
<b>Glass Globes</b>						
<b>VGL-01</b>	100	Clear	3-3/8	6-11/16	3-5/16	7/8
<b>VGLA-01</b>		Amber				
<b>VGLB-01</b>		Blue				
<b>VGLG-01</b>		Green				
<b>VGLR-01</b>		Red				
<b>VGLH-01</b>	150	Clear heat resistant				
<b>VGL-02</b>	200	Clear	4-3/8	8-3/8	4-5/16	
<b>VGLR-02</b>		Red				
<b>VGLH-02</b>		300				
<b>Lexan Globes</b>						
<b>VGLL-01*</b>	75	Clear prismatic	3-11/16	5-15/16	3-3/8	7/8
<b>VGLL-02*</b>	150		4-11/16	8-1/4	4-3/8	
<b>VGLA-A1*</b>	75	Amber	3-11/16	5-15/16	3-3/8	
<b>VGLA-R1*</b>		Red				

\* Not for use with guards.

Note: For upright mounting only. Caution: In ordering Lexan Globe, wattage is rated 75% of standard globe size i.e. VGLL-02 is for use on 200 watt fixtures, but only rated for 150 watt lamps.

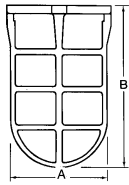




**VGW-01**



**VGD-01**



**V-B**

Cat. No.	Max. Watt	Description	A	B
<b>Guards</b>				
<b>Wire</b>				
<b>VGW-01</b>	100	Clamp-on plated steel guards	4-1/16	6-7/8
<b>VGW-02</b>	200		5-5/16	8-3/4
<b>Die Cast</b>				
<b>VGD-01</b>	100	Die Cast aluminum guards with positive locking screws	4-1/16	7
<b>VGD-02</b>	200		5-5/16	8-5/8

Cat. No.	Description
<b>Vaportight Boxe and Cover</b>	
<b>V-B</b>	Blank Cover 3-1/2 diameter

