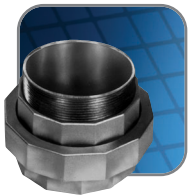
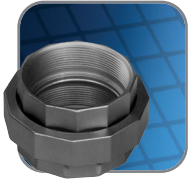


Technical Specifications



Applications:

- Unions are used as connecting elements between enclosures, fittings or boxes which permit future changes to the system in both hazardous and non-hazardous areas.

Features/Benefits:

- Copper-free (less than .004 copper content) aluminum provides increased corrosion resistance.
- Precision cast and machined surfaces permit safer wire pulling.
- Precision NPT threaded hubs allow trouble-free field installation for rigid or IMC conduit.
- Clear UL, CSA and cubic content markings speed approval by inspectors.
- Unique concentric ring design insures critical flame path control.

Standard Materials:

- Die cast aluminum alloy A360 (less than .004 copper content).
- EXMU nipples are galvanized steel.

Standard Finish:

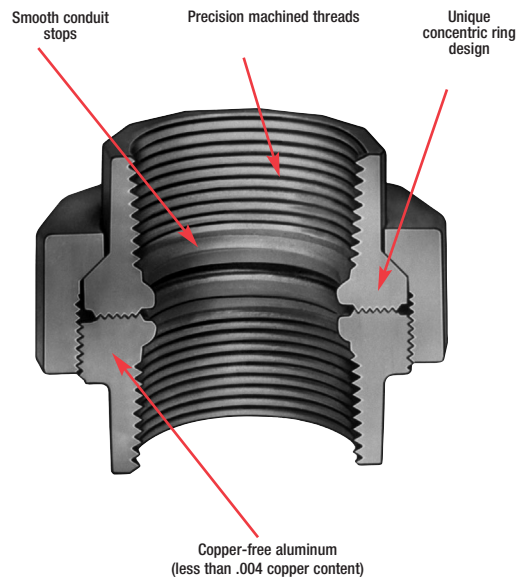
- Aluminum lacquer finish

Compliances:

Compliances as noted on each page of the catalogue include:

- CSA Certified
- UL Listed
- Suitable for hazardous locations

Class I, Groups C, D	NEMA 7CD
Class II, Groups E, F, G	9EFG
Class III, Divisions 1 and 2	12

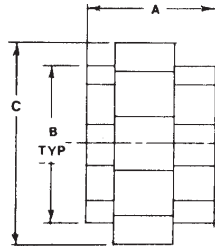


Conduit Unions • Hazardous Locations

Male and Female Conduit Unions



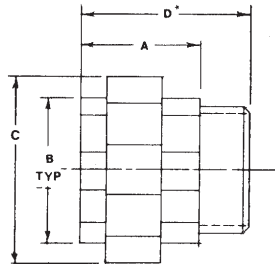
EXFU



Cat. No.	Hub Size	A	B	C
Female to Female Union (Cast Aluminum)				
EXFU-1	1/2	1-3/4	1-9/32	1-15/16
EXFU-2	3/4			
EXFU-3	1	2-1/4	1-19/32	2-3/16
EXFU-4	1-1/4		1-7/8	2-3/4
EXFU-5	1-1/2		3	3
EXFU-6	2		3-1/2	3-1/2
EXFU-7	2-1/2	3-3/16	3-3/16	4-1/4
EXFU-8	3	3-1/4	3-15/16	5
EXFU-9	3-1/2	3-1/2	4-17/32	5-5/8
EXFU-10	4	3-5/8	5-1/8	6-9/32



EXMU



Cat. No.	Hub Size	A	B	C	D
Male to Female (Cast Aluminum)					
EXMU-1	1/2	1-3/4	1-9/32	1-15/16	2-15/32
EXMU-2	3/4				2-9/16
EXMU-3	1	2	1-19/32	2-3/16	2-11/16

