

## Technical Specifications



### Applications:

- Junction for branch conduits.
- Accessible wiring chamber provides a convenient location to pull conductors and make splices.

### Features/Benefits:

- Copper-free (less than .004 copper content) aluminum provides increased corrosion resistance.
- Precision cast and machined surfaces permit safer wire pulling.
- Precision NPT threaded hubs allow trouble-free field installation for rigid or IMC conduit.
- Deep slotted cover screws for faster installation.
- Clear UL, CSA and cubic content markings speed approval by inspectors.



### Standard Materials:

- Die cast aluminum alloy A360 (less than .004 copper content).

### Standard Finish:

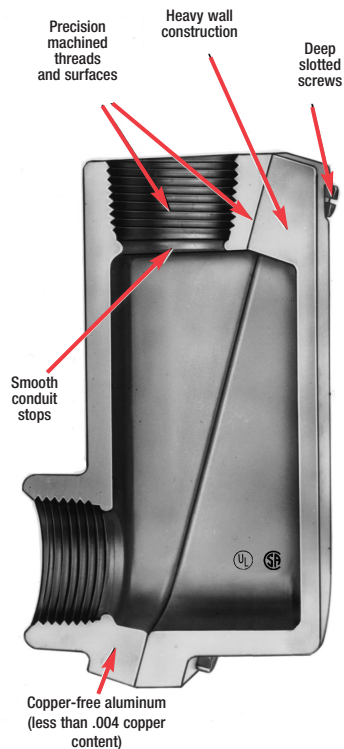
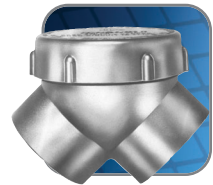
- Aluminum lacquer finish

### Compliances:

Compliances as noted on each page of the catalogue include:

- CSA Certified
- UL Listed
- Suitable for hazardous locations
 

Class I, Groups C, D	NEMA 7CD
Class II, Groups E, F, G	9EFG
Class III, Divisions 1 and 2	12

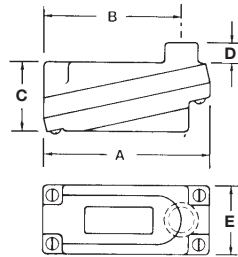


# Conduit Fittings • Hazardous Locations

## Conduit Elbows and Capped Elbows



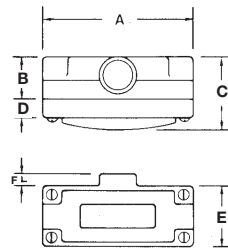
**EXLB**



Cat. No.	Hub Size	A	B	C	D	E
<b>"LB" Style Conduit Body (Cast Aluminum)</b>						
<b>EXLB-1</b>	1/2	4-3/16	3-1/4	1-3/4	1-9/32	1-11/16
<b>EXLB-2</b>	3/4	4-5/8	3-5/8	1-15/16		1-13/16
<b>EXLB-3</b>	1	5-3/8	4-1/2	2-5/16	2-1/32	2-3/16



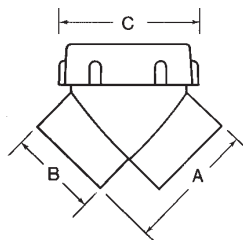
**EXT**



Cat. No.	Hub Size	A	B	C	D	E	F
<b>"T" Style Conduit (Cast Aluminum)</b>							
<b>EXT-1</b>	1/2	4-1/4	1-3/8	2-1/8	1/2	1-11/16	1-1/16
<b>EXT-2</b>	3/4	4-3/4	1-1/2	2-3/8	9/16	1-13/16	1-1/32
<b>EXT-3</b>	1	5-1/2	1-7/8	2-11/16	7/16	2-3/16	7/16



**GYF**



Cat. No.	Hub Size	A	B	C
<b>Capped Elbow Female to female (Cast Aluminum)</b>				
<b>GYF-1</b>	1/2	1-13/16	1-1/8	2
<b>GYF-2</b>	3/4	2-9/32	1-9/16	2-7/16
<b>GYF-3</b>	1			



Dimensions are in inches.