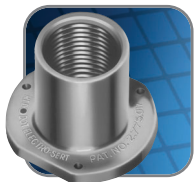


Technical Specifications



Applications:

- Permits in-slab ceiling drops and floor mounts in poured concrete.
- Provides flush threaded conduit hub for mounting, pulling and future access to conduit systems.
- Design permits prefabrication of in-slab conduit system.

Features/Benefits:

- Flush design leaves no broken or bent stubs for easy removal of undamaged forms.
- Flush design permits simplified in-slab work.
- Flush design leaves a neat, uncluttered job.
- Offered in straight ES configuration for straight through conduit runs and mounting of floor boxes in slabs over 6" thick.
- Offered in ESL configuration to eliminate bending of conduit in slabs over 4" thick.
- Precision cast and machined surfaces permit safer wire pulling.
- ZAMAK 3 Zinc can be embedded in concrete.

Standard Material:

- Die cast zinc alloy ZAMAK 3. Certified by the Certified Zinc Alloy Plan (CZAP).

Standard Finish:

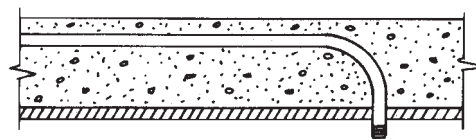
- Natural

Compliances:

Compliances as noted on each page of the catalogue include:

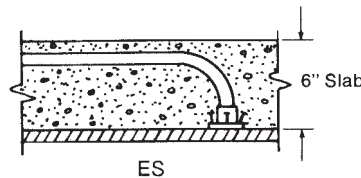
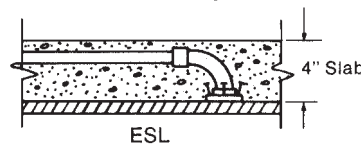
- CSA Certified
- UL Listed

Old Way



Conduit running in a cement slab is bent 90° to run through a hole drilled in the form. Drilling takes time and damages the form. Stripping form often damages conduit stubs. Varying length of stubs requires individual measuring and cutting of conduit drops.

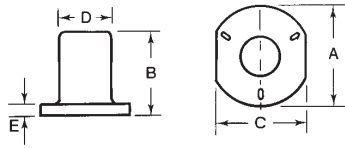
Red Dot Way



Conduit running in a cement slab is attached to a 90° concrete slab insert, or conduit is bent 90° and is threaded to a straight insert. Nail or screw fitting to wood or metal forms. After concrete is poured and forms stripped, conduit drops quickly into fittings. Drops are easily measured from ceiling line to switch or outlet height and cut in uniform lengths.

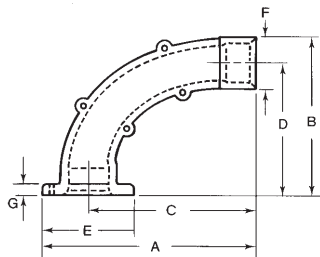
Concrete Slab Inserts

Concrete Tight Conduit Insert



ES

Cat. No.	Hub Size	A	B	C	D	E
Straight Conduit Insert (Zinc)						
ES-1	1/2	1-59/64	1-9/16	1-23/32	1-1/32	1/4
ES-2	3/4	2-11/64	1-5/8	1-31/32	1-1/4	
ES-3	1	2-9/16	2	2-5/16	1-17/32	



ESL

Cat. No.	Hub Size	A	B	C	D	E	F	G
90° Angle Conduit Insert (Zinc)								
ESL-1	1/2	4-27/32	3-45/64	3-29/32	3-3/16	1-7/8	1-1/32	1/4
ESL-2	3/4	5-11/64	3-23/32	4-1/8	4-1/8	2-1/8	1-1/4	
ESL-3	1	5-5/32	3-3/4	3-15/16	3-15/16	2-7/16	1-17/32	



Dimensions are in inches.