

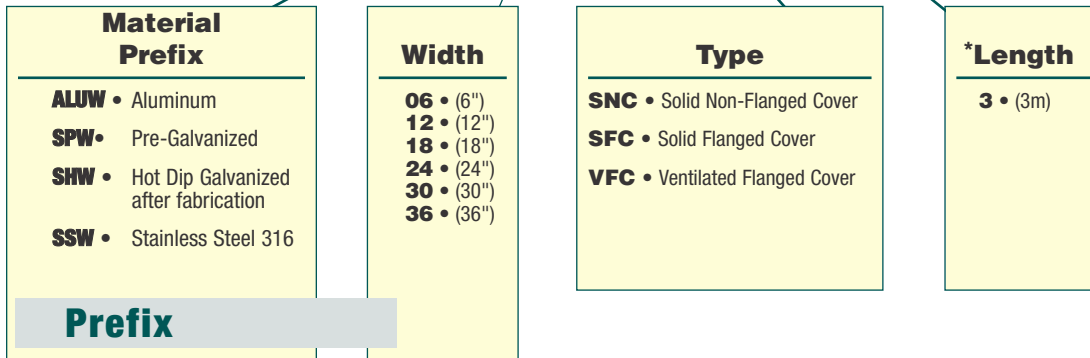
One Piece Cable Tray

Accessories and Covers

Straight Covers

Straight Cover Number Selection

(ALUW12)SNC-3

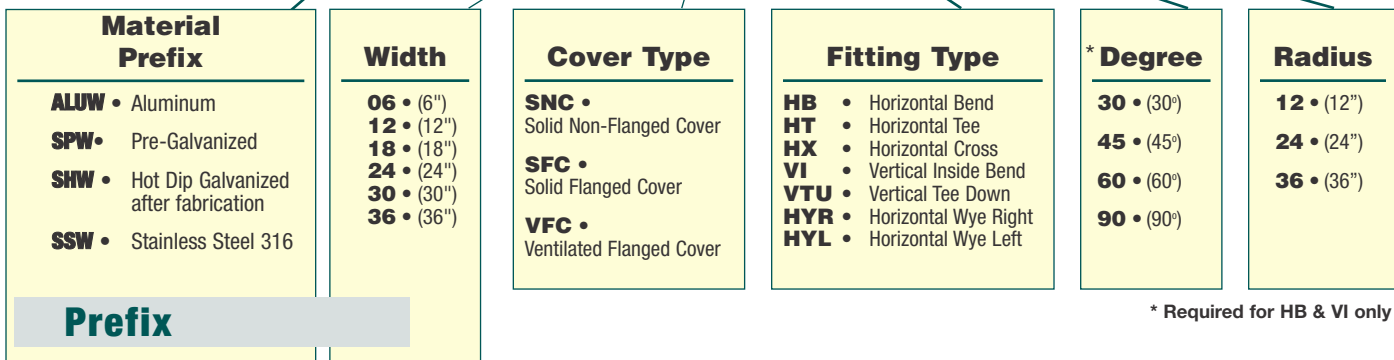


* For SHW covers, maximum lengths are 72" and 1500 mm.

Fitting Covers

Fitting Cover Number Selection

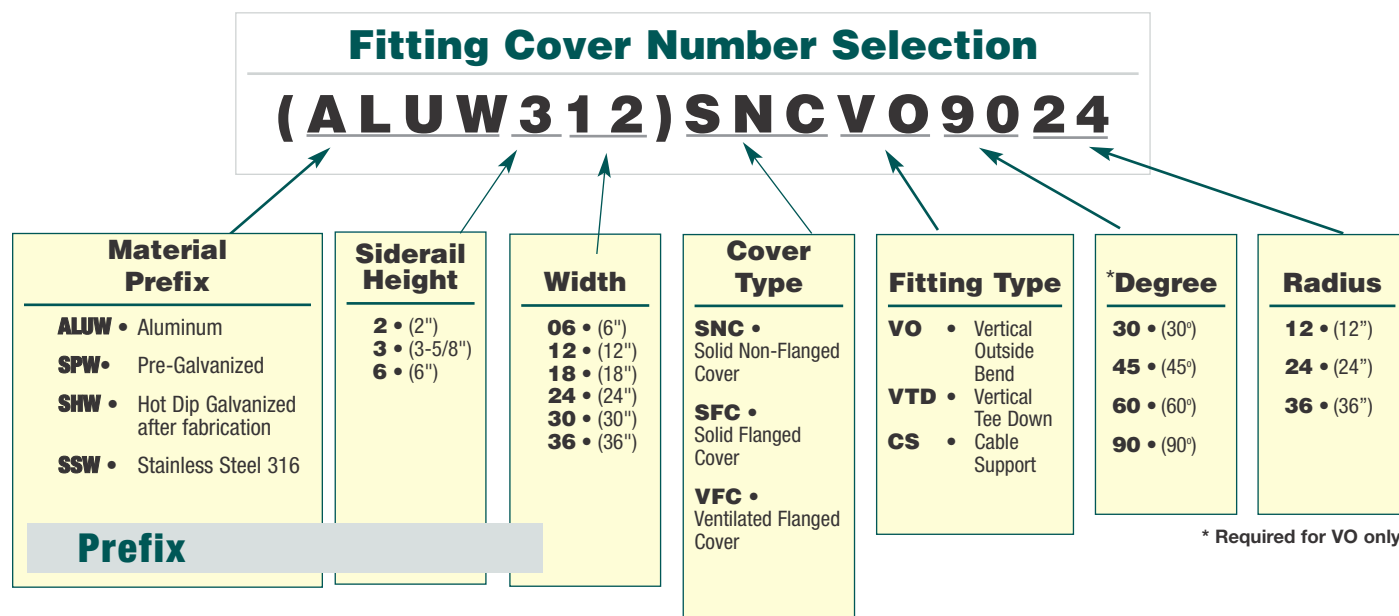
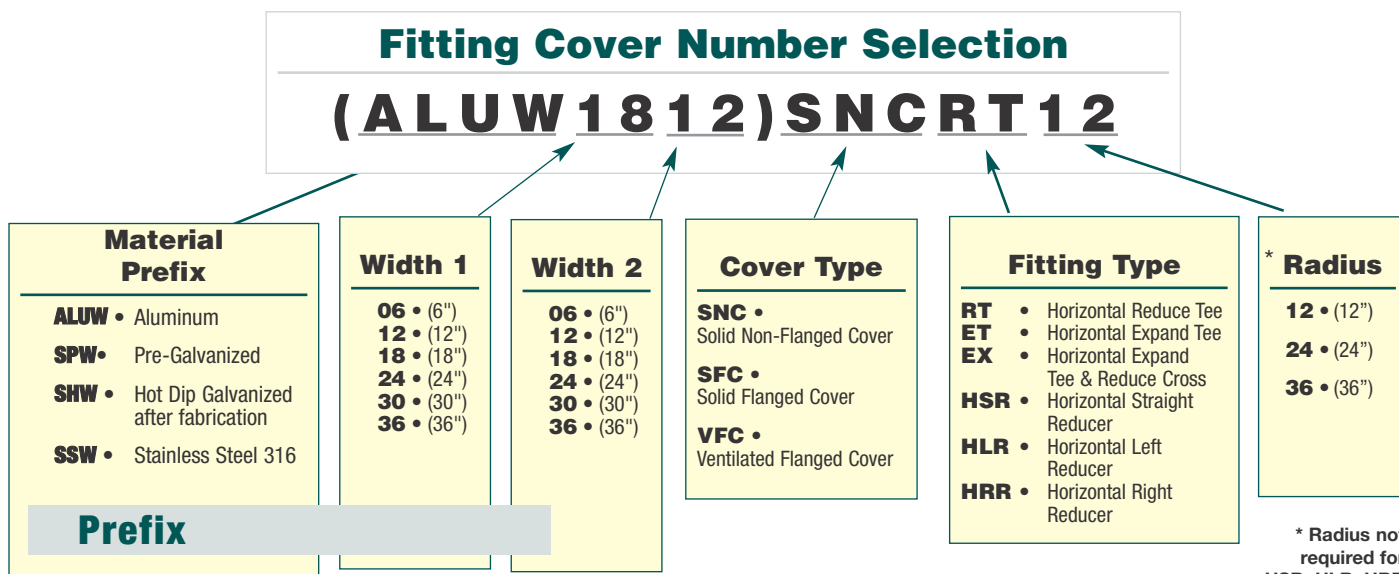
(ALUW12)SNCHB9024



* Required for HB & VI only

Note: Cover mounting hardware sold separately.

Fitting Covers (cont'd)

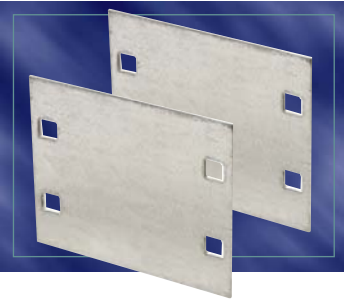


Note: Cover mounting hardware sold separately.

One Piece Cable Tray

Accessories and Covers

Standard Splice Plate

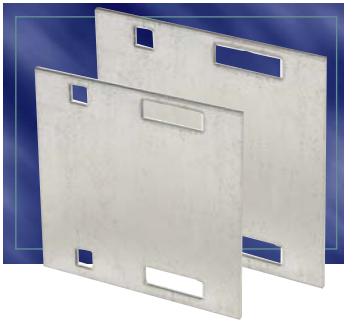


Packaged in pairs with zinc plated hardware. Provided as standard with each straight and/or fitting.

Material Prefix	Siderail Height	Catalogue Number
ALUW	2"	(Prefix)-2-SSP
SHUW		
SPUW		
SSUW		

Material Prefix	Siderail Height	Catalogue Number
ALUW	3"	(Prefix)-3-SSP
SHW	6"	(Prefix)-6-SSP
SPW		
SSW		

Expansion Splice Plate

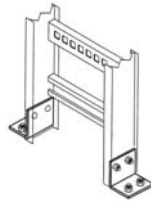
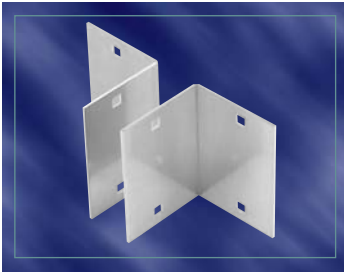


Allows for a 1" expansion or contraction of tray system. Packaged in pairs with hardware.

Material Prefix	Siderail Height	Catalogue Number
ALUW	2"	(Prefix)-2-ESP
SHUW		
SPUW		
SSUW		

Material Prefix	Siderail Height	Catalogue Number
ALUW	3"	(Prefix)-3-ESP
SHW	6"	(Prefix)-6-ESP
SPW		
SSW		

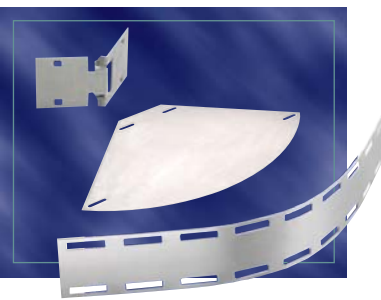
Box to Tray Plates



Designed to secure tray to electrical panels or boxes, walls or end supports. Packaged in pairs with hardware..

Material Prefix	Siderail Height	Catalogue Number
SPW	3"	(Prefix)-3-BSP
SHW	4"	(Prefix)-4-BSP
SSW	5"	(Prefix)-5-BSP
	6"	(Prefix)-6-BSP
	7"	(Prefix)-7-BSP

Horizontal Adjustable Plate

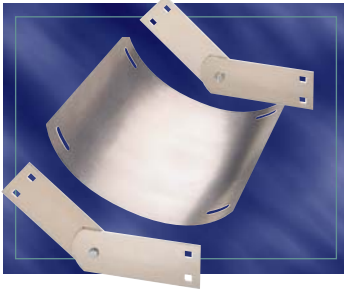


Adjustable hinge plates provide maximum horizontal installation flexibility. Furnished as a kit with hardware.

Material Prefix	Width	Catalogue Number
ALUW	06"	(Prefix)-(*)06HAP
SPUW	09"	(Prefix)-(*)09HAP
SSUW	12"	(Prefix)-(*)12HAP
	18"	(Prefix)-(*)18HAP
	24"	(Prefix)-(*)24HAP
	30"	(Prefix)-(*)30HAP
	36"	(Prefix)-(*)36HAP

* Insert siderail height

Vertical Adjustable Plate

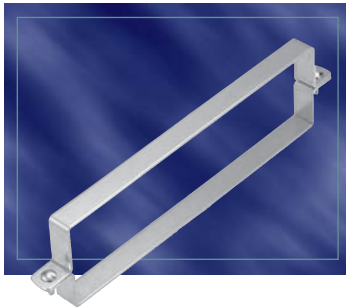


Hinged vertical plates provide maximum flexibility for changes in elevation. Furnished as a kit with hardware.

Material Prefix	Height	Width	Catalogue Number
ALUW	2"	06"	(Prefix)-2-**-VSP
SPUW	3"	12"	(Prefix)-3-**-VSP
SSUW	6"	18"	(Prefix)-6-**-VSP
		24"	
		30"	
		36"	

** Insert width

Heavy Duty Cover Clamp

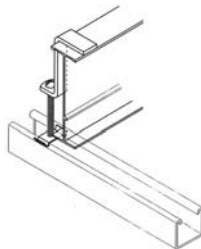
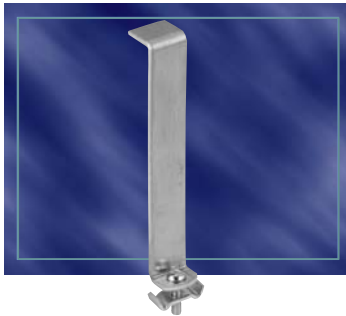


Material Prefix	Siderail Height	Width of Tray	Catalogue Number
ALUW	2"	06"	(Prefix)-2-**-HCC
SHUW		12"	
SPUW		18"	
SSUW		24"	
		30"	
		36"	

Material Prefix	Siderail Height	Width of Tray	Catalogue Number
ALUW	3"	06"	(Prefix)-3-**-HCC
SHW	6"	12"	(Prefix)-6-**-HCC
SPW		18"	
SSW		24"	
		30"	
		36"	

** Insert Width of Tray

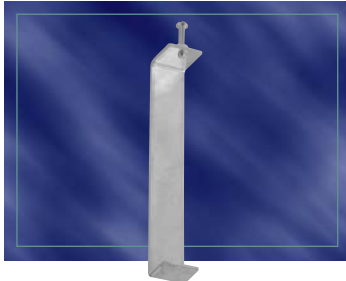
Combination Hold Down Cover Clamp



Designed to secure flat and flanged covers with hold down feature.

Material Prefix	Siderail Height	Catalogue Number
SPW	3"	(Prefix)-3-CCC
SSW	4"	(Prefix)-4-CCC
	5"	(Prefix)-5-CCC
	6"	(Prefix)-6-CCC
	7"	(Prefix)-7-CCC

Cover Clamp



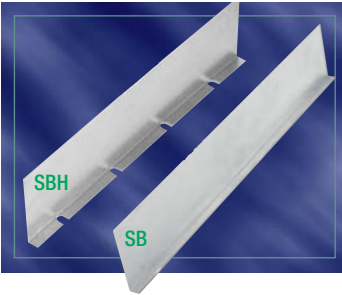
Rigid indoor cover clamp for flat and flanged covers.

Material Prefix	Height	Catalogue Number
SPW	2"	(Prefix)-2-SCC
SSW	3"	(Prefix)-3-SCC
	6"	(Prefix)-6-SCC

One Piece Cable Tray

Accessories and Covers

Horizontal Barrier Strips



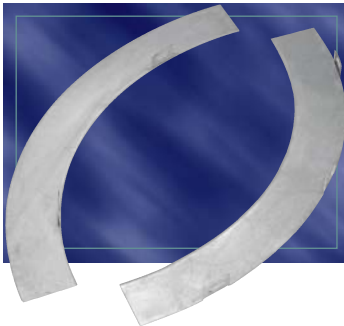
Barrier Strips provide a method of separating cables in tray and trough systems. Easily installed using supplied hardware or Barrier Strip Clamps (sold separately).

72" barriers are flexible for use with horizontal fittings.

Material Prefix	Height	Length	Catalogue Number
ALUW	2"	3 m	(Prefix)-2-SB-3
SPUW	3"		(Prefix)-3-SB-3
SSUW	6"		(Prefix)-6-SB-3
ALUW	2"	72"	(Prefix)-2-SBH-72
SPUW	3"		(Prefix)-3-SBH-72
SSUW	6"		(Prefix)-6-SBH-72

NOTE: 72" barriers provided with 3 SPW10SCR
3m barriers provided with 6 SPW10SCR

Vertical Barrier Strips

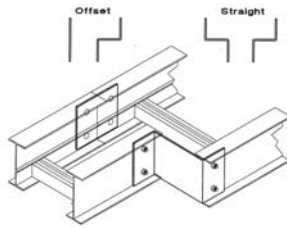
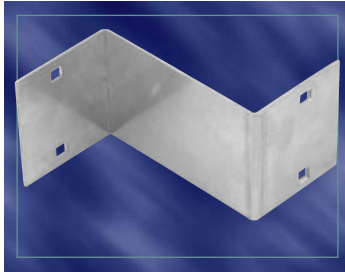


Material Prefix	Height	Inside Bend Catalogue Number	Outside Bend Catalogue Number	Angle	Radius
ALUW	2"	(Prefix)-2-VIB-(*)-(**)	Prefix-2-VOB-(*)-(**)	90	12
SPUW	3"	(Prefix)-3-VIB-(*)-(**)	Prefix-3-VOB-(*)-(**)	60	24
SSUW	6"	(Prefix)-6-VIB-(*)-(**)	Prefix-6-VOB-(*)-(**)	45	36
				30	

Preformed to fit all standard steel vertical bends.
Provided with hardware

(*) Insert Angle (**) Insert Radius

Reducing Splice Plate



Used in pairs to provide a straight reduction or used with a Standard Splice Plate for an offset reduction. One per package with hardware

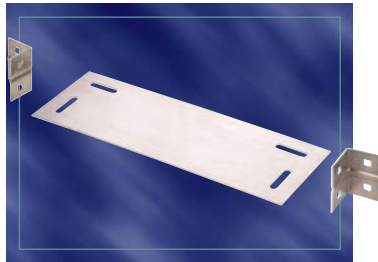
Material Prefix	Siderail Height	Catalogue Number
ALUW SHUW SPUW SSUW	2"	(Prefix)-2-RSP

Material Prefix	Siderail Height	Catalogue Number
ALUW	3"	(Prefix)-3-RSP
SHW SPW SSW	6"	(Prefix)-6-RSP

*Note: * For Offset Reduction: Insert width to be reduced.
For Straight Reduction: Insert 1/2 width to be reduced (2 required)

Example: ALUW-603-RSP = 3" offset reducer

Horizontal Tee Branch



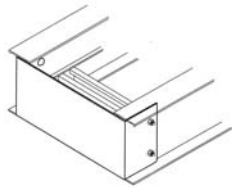
Material Prefix	Height	Width	Catalogue Number
ALUW	2"	6"	(Prefix)-2-(**)-HTB
SPUW	3"	12"	(Prefix)-3-(**)-HTB
SSUW	6"	18"	(Prefix)-6-(**)-HTB
		24"	
		30"	
		36"	

(**) Insert width

One Piece Cable Tray

Accessories and Covers

Closure End Plate



Provides closure for any tray end. Hardware included.

Material Prefix	Siderail Height	Width of Tray	Catalogue Number
ALUW	2"	06"	(Prefix)-2-**-CEP
SHUW		12"	
SPUW		18"	
SSUW		24"	
		30"	
		36"	

Material Prefix	Siderail Height	Width of Tray	Catalogue Number
ALUW	3"	06"	(Prefix)-3-**-CEP
SHW	6"	12"	(Prefix)-6-**-CEP
SPW		18"	
SSW		24"	
		30"	
		36"	

** Insert Width of Tray

Drop-Out

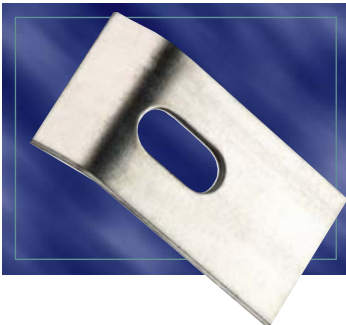


Designed to provide a smooth radiused surface at any position on the tray or trough bottom. Drop-Outs are easily attached using hardware provided. Standard Radius = 4".

Material Prefix	Width	Catalogue Number
ALUW	6"	(Prefix)-**-DOS
SPW	12"	
SSW	18"	
	24"	
	30"	
	36"	

** Insert Width of Tray

Standard Hold Down Clamp

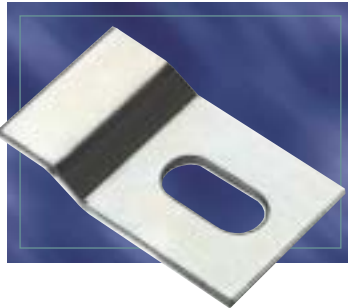


Designed for most indoor installations. Easy to use and install. Order 1/4" hardware separately

Material Prefix	Catalogue Number
SPW	(Prefix)-SHC
SSW	
SPW	(Prefix)-SHC-HDW
SSW	

Note: HDW = Supplied complete with 1/4" hardware.

Combination Hold Down / Expansion Clamp



Order 1/4" hardware separately.

Material Prefix	Catalogue Number
SPW SSW	(Prefix)-HEC

Steel Tray Hardware

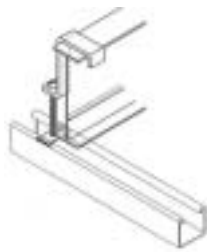


Wrap around design offers added protection for rugged applications and outdoor conditions.
Hardware included

Description	Material	Catalogue Number
1/4" Carriage Bolt	Zinc Plated Steel	SPW-1/4-CB
3/8" Carriage Bolt	Zinc Plated Steel	SPW-3/8-CB
1/4" Hex. Nut	Zinc Plated Steel	SPW-1/4-HN
3/8" Hex. Nut	Zinc Plated Steel	SPW-3/8-HN
3/8" Carriage Bolt	316 Stainless	SSW-3/8-CB
3/8" Hex. Nut	316 Stainless	SSW-3/8-HN
316 Stainless Steel Hardware Kit	316 Stainless	SSW-3/8-HWK*

* Contains 8 nuts, 8 bolts, 8 lock washers

Combination Hold Down / Cover Clamp



Material Prefix	Siderail Height	Catalogue Number
SPUW	2"	(Prefix)-2-HDC
SSUW	3"	(Prefix)-3-HDC
	6"	(Prefix)-6-HDC