



LDXA SERIES

Decorative, 6 and 12V

FEATURES

- Rugged steel cabinet with corrosion-resistant undercoating
- Removable front panel on cabinet provides easy access and allows unit to be mounted at ceiling height
- Solid-state pulse-type charger current-limited, temperature compensated, short-circuit proof and reverse-polarity protected
- Unit comes standard with electronic lockout and brownout circuits
- Sealed dust-proof transfer relay, test switch and LED indicator light(s)
- Long-life, maintenance-free lead acid battery
- NEXUS® compatible. Please consult your sales representative
- CSA C22.2 No. 141 Certified



Type:	_____
Project/Location:	_____
Contractor:	_____
Prepared By:	_____
Date:	_____
Model No.:	_____

TYPICAL SPECIFICATIONS

Supply and install the **Ready-Lite® LDXA Series** battery units. The battery unit shall come complete with two MR16 emergency lighting heads. The unit shall be rated for dual voltage 120/347V, 60 Hz and shall provide power to the nominal load for at least 30 minutes to 87.5% of the nominal voltage of the battery. The charger shall be factory set with a charging voltage tolerance of $\pm 1\%$ to enable a longer battery life. The emergency light heads shall be fully adjustable and protected by a clear cover, made of shock-resistant polycarbonate. The protective cover shall be designed to facilitate lamp replacement. The heads shall be installed at the bottom of the unit, providing illumination in any downward direction. The emergency light heads shall require no tools for orientation.

The unit cabinet shall be made of steel with anti-corrosion undercoating. The unit equipped with the auto-test diagnostic micro-controller board shall self-test 1 minute every 30 days, 10 minutes the every 6 months and 30 minutes every 12 months. The unit shall be supplied with a test switch and diagnostic LED indicator lights to continuously monitor the status of the unit: Battery Failure, Battery Disconnect, Charger Failure, Lamp Failure, Service Alarm, main voltage AC "ON", Charger High Rate.

The unit shall be CSA Certified to C22.2 no.141.

The unit shall be **Ready-Lite®** model: _____

WIRE GUARDS

460.0080-RL	wall mount
-------------	------------

REPLACEMENT LAMPS

ORDERING CODE	LAMP TYPE	VOLTAGE/ WATTAGE
580.0074-RL	MR16	6V-6W
580.0079-RL	MR16	6V-10W
580.0080-RL	MR16	12V-12W
580.0068-RL	MR16	12V-20W
580.0097-RL	MR16, LED	6V-4W
580.0093-RL	MR16, LED	12V-4W
580.0104-RL	MR16, LED	12V-5W
580.0106-RL	MR16, LED	12V-6W

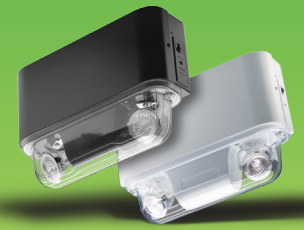
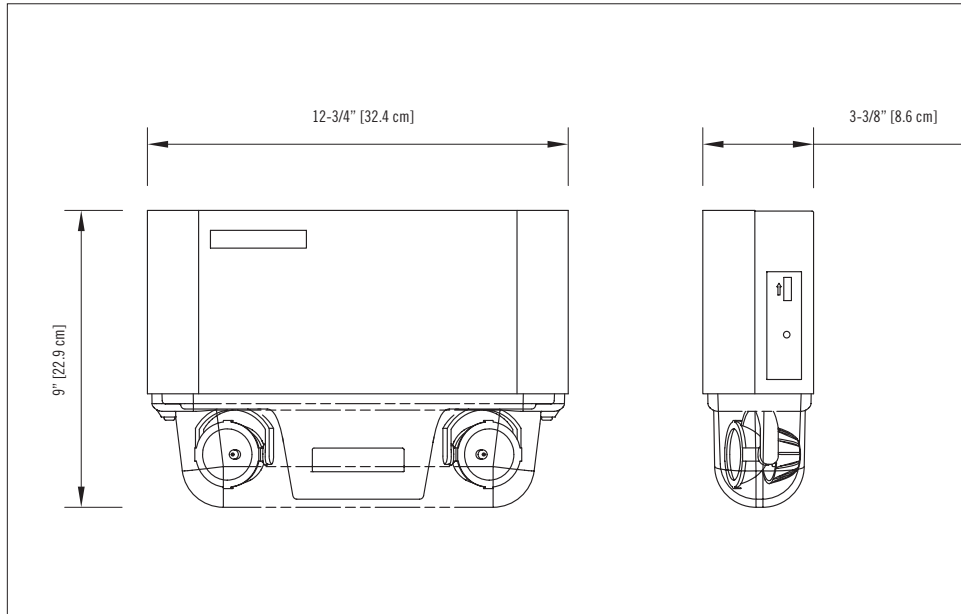
POWER CONSUMPTION AND UNIT RATING

MODEL	AC SPECS		WATTAGE CAPACITY				
			30MIN	1H00	1H30	2H00	4H00
LDXA627	120/347VAC	0.06/0.02 A	27	15	11	9	-
LDXA644		0.18/0.06 A	44	26	18	15	7
LDXA672		0.19/0.07 A	72	42	30	24	12
LDXA1244		0.31/0.10 A	44	26	18	15	7
LDXA1272		0.31/0.10 A	72	42	30	24	12

Type: _____
 Project/Location: _____
 Contractor: _____
 Prepared By: _____
 Date: _____
 Model No.: _____

DIMENSIONS

Dimensions are approximate and subject to change.



LDXA SERIES

Decorative, 6 and 12V

ORDERING INFORMATION

SERIES	CAPACITY	SPECIAL OPTIONS	# OF HEADS	HEADS STYLE/WATTAGE	COLOUR	AC VOLTAGE	OPTIONS
LDXA6= 6V	-27= 27W -44= 44W -72= 72W	Blank = no options AD = auto-diagnostic* ADN = auto-diagnostic, non-audible* NEX = NEXUS® system interface* NEXRF = wireless NEXUS® system interface*	2= 2 heads	LD1 = MR16 LED, 6V-4W LD7 = MR16 LED, 12V-4W LD9 = MR16 LED, 12V-5W LD10 = MR16 LED, 12V-6W RM6 = MR16 halogen, 6V-6W RM10 = MR16 halogen, 6V-10W RM12 = MR16 halogen, 12V-12W RM20 = MR16 halogen, 12V-20W RMH20 = MR16-IR, 12V-20W, high-output	Blank = factory white BK = black	Blank = 120/347VAC U277 = 277VAC input	Blank = no options CT = cab-tire LC = line cord (120V) TL = twist-lock plug (120V)*
LDXA12= 12V	-44= 44W -72= 72W						
		*Not available in 6V-72W *Minimum lamp load required: 20% of unit capacity *Not all options available with NEXUS® System. Please consult your sales representative					*120V is standard

EXAMPLE: LDXA6-272RM6