



CMPS-RL SERIES

Thermoplastic pictogram exit sign

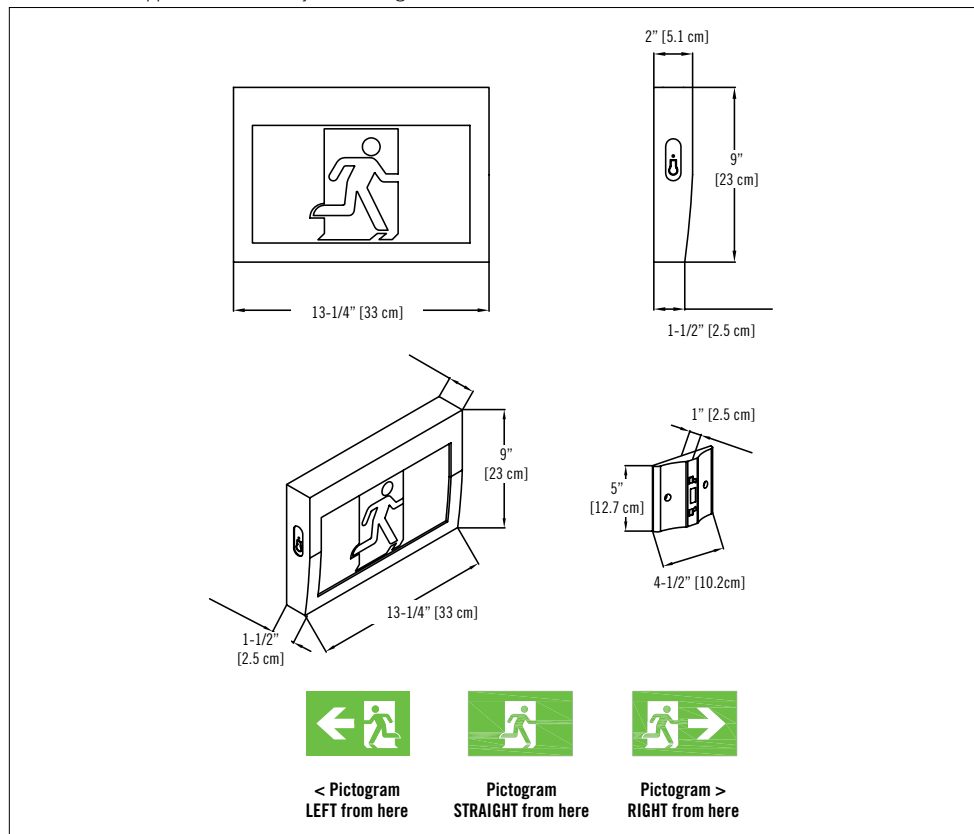
FEATURES

- Energy efficient, long-life white LEDs consuming 1.5W at normal operation
 - 120/277/347VAC Input
 - Universal single and double face
 - Automatic, temperature compensated, pulse type charger
 - Low voltage disconnect prevents over discharge of battery
 - Automatic brownout protection
 - Battery lock-out prevents discharge during installation
 - Comes standard with three pictogram legends for direction selection
 - Red LED charger monitor
 - Injection-molded off-white thermoplastic ABS housing
 - Fast and easy installation with snap-together design
 - Ceiling, wall or end mount installation
 - CSA C22.2 no.141-10 listed
 - Selection of self-powered using a 3.6V Ni-Cd battery and AC model
- See warranty details at: www.tnb.ca/en/brands/ready-lite



DIMENSIONS

Dimensions are approximate and subject to change.



POWER CONSUMPTION AND UNIT RATING

MODEL	AC SPECS				
		WATTAGE	CURRENT	EFFICIENCY	
CM-PS	AC-remote	120V, 50/60 Hz	1.5W	0.01A	0.96PF
		277V, 50/60 Hz	2W	0.01A	0.92PF
		347V, 50/60 Hz	2.4W	0.01A	0.91PF
CM-PS	Self-powered	120V, 50/60 Hz	2.5W	0.24A	0.98PF
		277V, 50/60 Hz	3W	0.014A	0.93PF
		347V, 50/60 Hz	3.5W	0.017A	0.92PF

ORDERING INFORMATION

SERIES	VOLTAGE	BRAND
CM-PS	-AC= 120/277/347VAC -SP= 120/277/347VAC, self-powered (120 mins.)	-RL= Ready-Lite

EXAMPLE: CM-PS-AC-RL